

# MB03XL.01

## Piccola Tall Basin Mixer tap

meir®



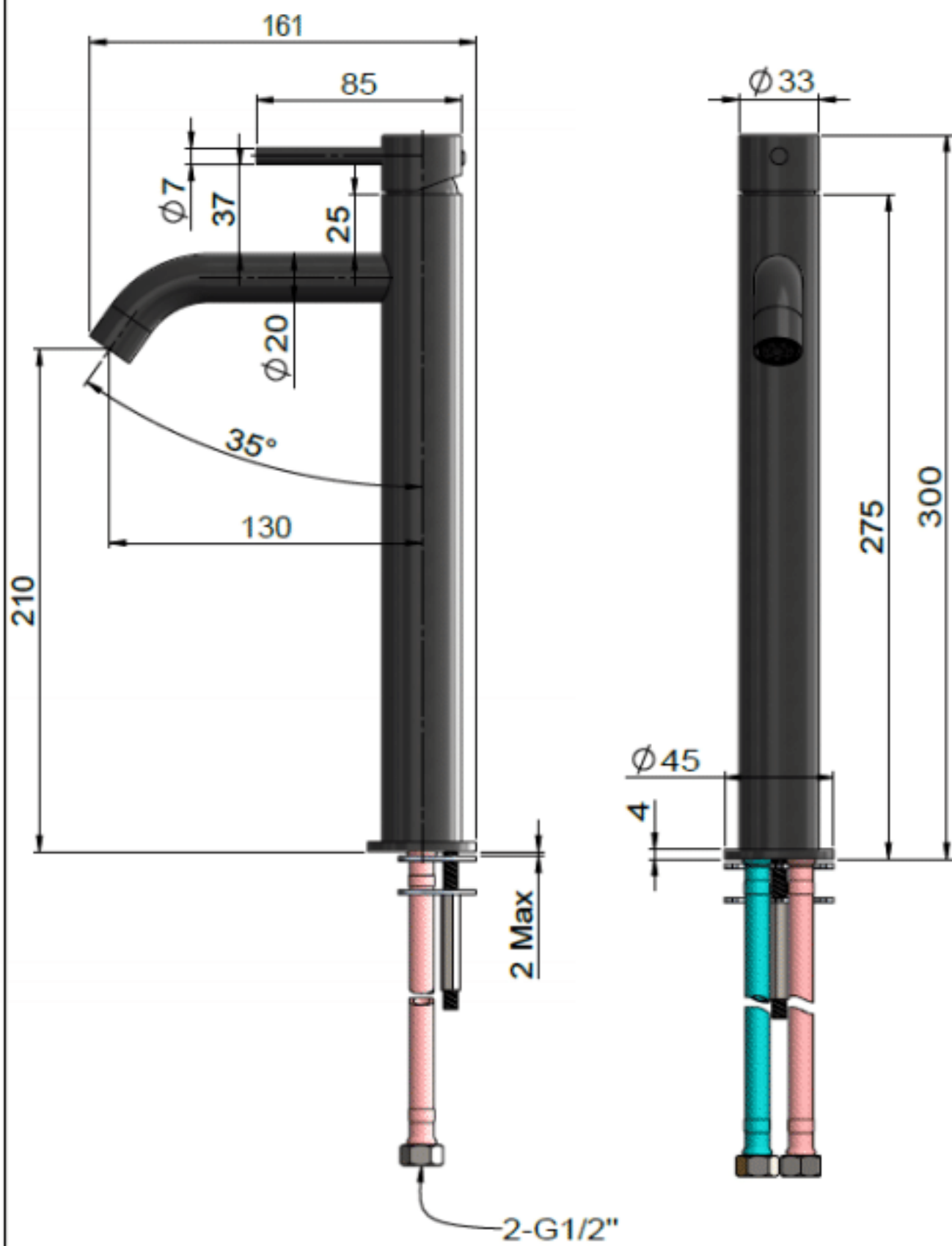
### FEATURES

- Refer to the Meir website for warranty terms & conditions.
- Flow rate **6L p/m**
- European components and cartridge
- Solid brass construction
- Box Weight **1.6 Kg**

### CARE

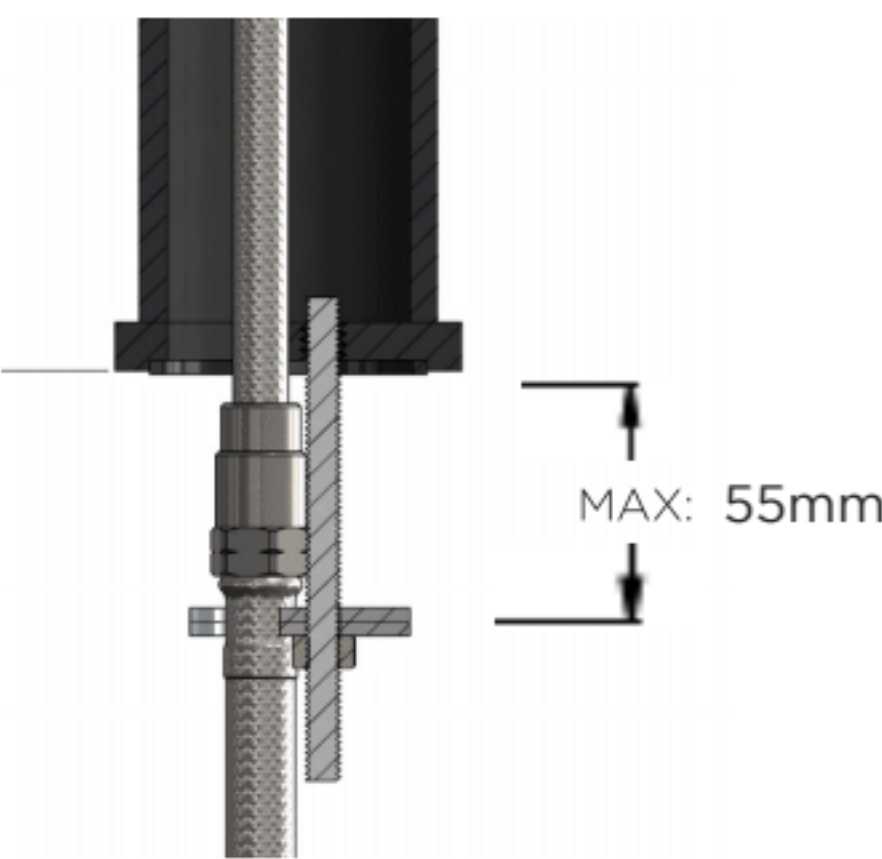
- Do not install tapware using any form of acetone silicones.
- Do not apply physical items (such as tools) directly to product.
- Never use house-hold or commercial detergents, citrus based cleaners, or abrasive cleaners.
- Clean using a mild washing soap solution rinsed, and dry with a soft cloth.
- Check for any product defects before installation.
- Refer to the installation manual for correct installation.

### SPECIFICATIONS

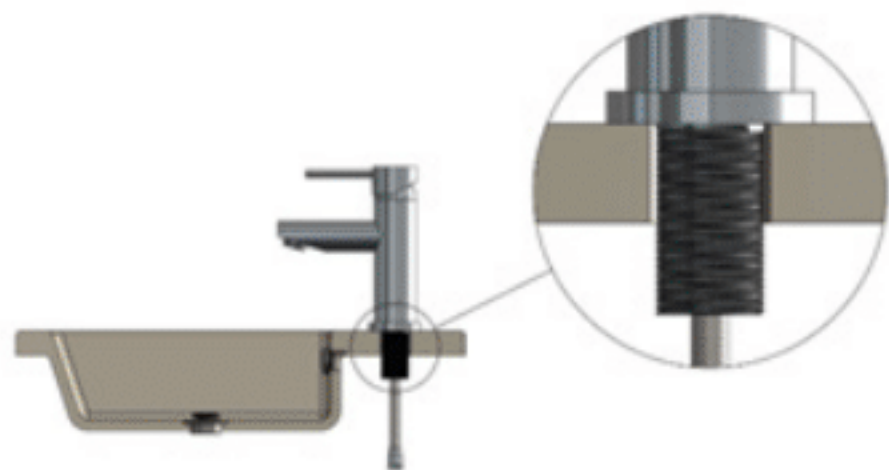


### TOLERANCES

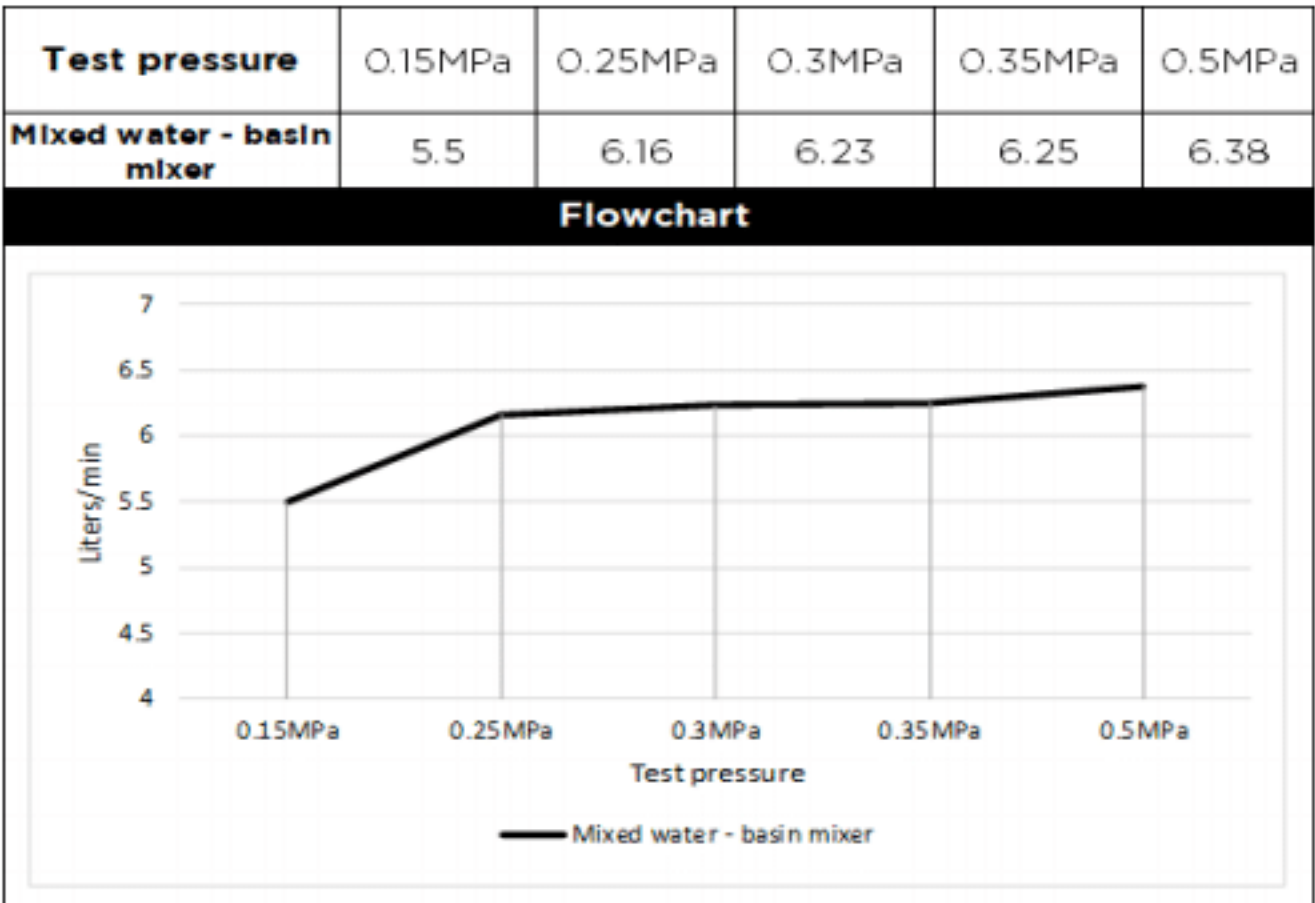
Mounting Surface Tolerance



Hole Diameter  
MIN: 30mm MAX: 35mm



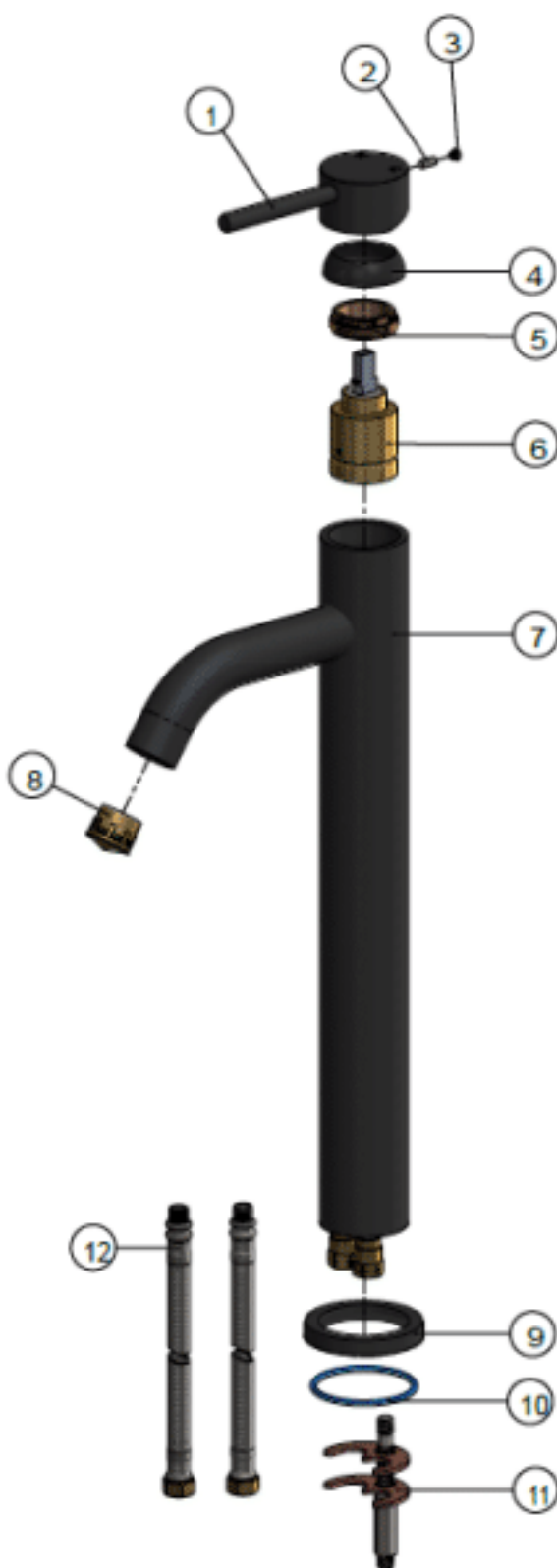
### FLOW RATE GRAPH



### CREDENTIALS

- Watermark AS/NZS3718WMKA25013

### EXPLODED VIEW



No.	Part Number	QTY
1	Handle	1
2	Screw	1
3	Decor Knob	1
4	Decor Cover	1
5	Nut	1
6	D25 Cartridge	1
7	Body	1
8	Aerator	1
9	Base	1
10	O-ring	1
11	Mounting Fittings	1
12	Inlet Hose	2