



TREND REPORT

Spaces Reimagined

EDITION 01

TEMPLE &
WEBSTER

Mix & Max

Past Forward

Sumptuous Sanctuaries

THE LOOK AHEAD

Fall in love with
your space all
over again.



Totti
Lamp



As Australia's largest online retailer in furniture, homewares and renovations, we don't follow trends; we live and breathe them. Every product we design and curate is rooted in a deep understanding of how Aussies want to live, feel and express themselves in their homes. From millions of customer interactions, to insights from our buyers, designers and stylists, we have a front-row seat to what is resonating now, and what will resonate tomorrow.

At Temple & Webster, we believe that a beautiful home isn't just nice to have, it's essential to how you feel every day. Everyone deserves a beautiful space, no matter your budget or where you live.

To bring you the latest in style, comfort and function, we dive deep into what Aussies are loving right now, analysing thousands of local shopping trends and real customer preferences. We then combine that with the inspiration of our "on the ground" insights from the world's biggest design and furniture shows, translating global ideas into looks that work right here at home.

The result? A fresh take on what's about to trend, what's timeless, and what's going to make you fall in love with your space all over again.

So, what's next in interiors for 2025?

We've identified three standout style shifts that are redefining the way we live and shaping the future of interiors. From bold, playful individuality to the reaffirmation of grounded, restorative spaces, and a wave of nostalgia reimaged through a modern lens.

Presenting the key trends leading these shifts: **Mix & Max**, **Past Forward** and **Sumptuous Sanctuaries**.

To help you nail the latest trends at home with ease, this Trend Report is also packed with style tips and affordable finds. Whether you're styling your first home or reimagining your forever one, this report is your inside guide to the future of interiors, from the brand that's already helping to shape it.

Lucy Sutherland
Director of Insights & Trends
Temple & Webster

Mix

WHERE
RUNWAY
MEETS
ROOM

& Max



From the bold, expressive runways of Milan to the curated chaos of your favourite social feeds, high fashion is no longer confined to what we wear, it's redefining how we live.

Mix & Max is the new mood: a confident collision of colour, pattern and personality that turns your home into a bold statement of self-expression.

Much like the layered, maximalist looks seen on catwalks this year, interiors are embracing a more playful, individualised style. It's not about following the rules, it's about breaking them... beautifully. Think unexpected pairings, bold colour clashes and a nod to nostalgia that feels both fresh and familiar.

So, what does that mean for your home? Think of styling your home like putting together your favourite outfit: layering bold colours, mixing playful patterns, and adding textured details that bring it all to life.

This trend is all about being playful. Soft pastels meeting rich, saturated hues to create striking contrasts that instantly lift the mood. It's lively, eclectic, and anything but predictable, where every room reflects a little bit of you.

Pattern is key. Think checkerboard with florals, surrealist squiggles, wavy stripes, and oversized prints that make you look twice. Textures add layers. Glossy, velvet, woven details, and smooth finishes all jostling together in harmony. Curved, wavy and sculptural shapes add a fashion-forward edge, often feeling more like art than furniture.

This trend is made for the unapologetic individualist; the one who wants their home to tell a story, spark a feeling, or make a statement.





Eclectic and never predictable.



Dreamy Curves

Our site has seen a massive 286% jump in “boucle bed” searches: proof that everyone’s falling head over heels for these snugly, curvy bedroom showstoppers!

*Based on Temple & Webster top keyword searches from 1 Jan to 31 May 2025 versus the previous corresponding period in the year prior.

286% ↑ Jump in “boucle bed” searches



The Ripple Effect

Sales of our wavy furniture and homewares have increased by up to 29%* this year, reflecting just how much Aussies are riding the wave of playfully shaped curves in interior decor.

*Based on Temple & Webster sales from 1 Jan to 31 May 2025 versus the previous corresponding period in the year prior.

29% ↑ Sales of wavy furniture and homewares

THE PULSE

PATTERN PARTY

23% ↑ Sales of patterned furniture and homewares

Sales of our stripy and checkered furniture and homeware products have soared by 23%* as Aussies embrace the playful punch of patterns.

*Based on sales from 1 Jan to 31 May 2025 versus the previous corresponding period in the year prior.

Nook Armchair →

Each room
tells
its
own

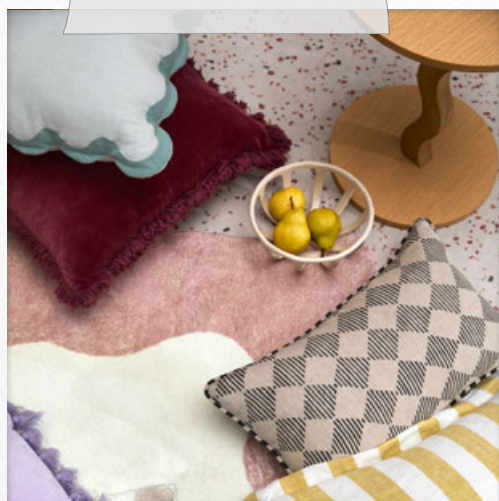
story.



← Sunset Muse



Cannes Sideboard →



Bold layers

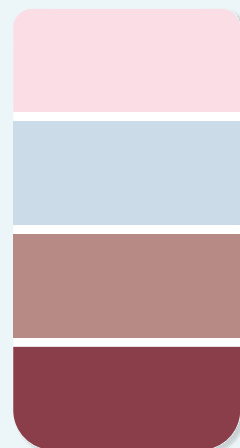


← Gingham? YES

More is more



← Clover Basin



Make a statement



No rules



Reflect you

← Lola Collection



High gloss →



↑ Play with shapes



↑ Pop of colour



1.

From curvy tables to wavy lamp bases, unmissable shapes will bring personality to your *Mix & Max* space. Look for pieces that double as art to instantly elevate and energise your room.

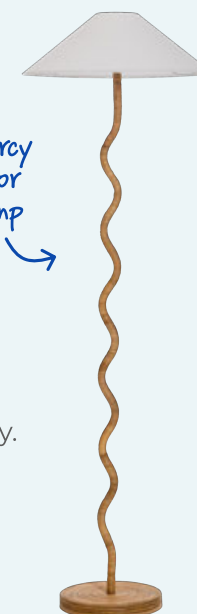
MIX & MAX

Get the look

2.

Stack vibrant books to build colour and height, then top it off with a lamp with personality. A curvy shade or unexpected texture pulls it all together.

Marcy Floor Lamp



Playful

3.

Create a strong focal point by styling your shelf with sculptural vases, playful ceramics and greenery that echo the colours or mood of the space.

Fleur Ottoman





Korina Dining Chairs



Colour

4.

Experiment with bold patterns. Try striped cushions with a checkered rug for extra personality. Work with colours in the same family so everything feels fun and not overwhelming.

5.

Use your artwork as a colour guide. Pick out the colours you love and then repeat them as bold statements for example, in cushions, rugs and decor.



Thessey Wall Art



Kali Table Lamp



Lucia Mirror

6.

Use a playful wavy statement mirror to add personality and softness to your room, but also to allow light to bounce visually expanding your space.



Past Forward

BOLD YET FAMILIAR

Hex Collection



Maria Side Table



Roselin Dining Chair

In uncertain times, we tend to look back to move forward and that's exactly what's happening in design right now. *Past Forward* is the answer to a rising desire for warmth, familiarity, and joy at home.

This is more than a trend, it's a feeling. One that taps into memories, stories, and the emotional pull of eras gone by, while reimagining them through a modern lens.

As life speeds up and the world feels increasingly complex, many of us are turning to the past for comfort, bringing in colours, shapes and textures from the 70s and 80s that reflect simple and happy moments.

The palette mixes deep, saturated tones with soft, sunfaded hues, creating a look that feels both nostalgic and contemporary. Fringing, stripes and decorative trims bring personality and a sense of storytelling, while plush textures, brushed finishes, and coloured glass add depth and warmth. Think sunken lounges, retro bar carts, dining nooks featuring plush textiles, and statement shapes that bring charm and conversation to everyday spaces.

Past Forward isn't about going back in time, it's about borrowing the best bits of the past and making them feel brand new. It's fearless, expressive, and full of personality proving that great style never really goes out of fashion.





Cuddle Armchair



Teo Lamp

32% ↑
Sales of merlot furniture and homewares

Red Resurgence

Merlot mania is here! Sales of our Merlot furniture and homewares have jumped by 32%* showing Aussies are raising a glass to this luscious crimson hue.

*Based on Temple & Webster sales from 1 Jan to 31 May 2025 versus the previous corresponding period in the year prior.

115% ↑ Searches for walnut coffee table

Retro Riches

Aussies are going nuts for walnut to add vintage charm to their living spaces. Searches for this deliciously retro chocolate timber are up 95%, and “walnut coffee table” is up a whopping 115%.

*Based on Temple & Webster top keyword searches from 1 Jan to 31 May 2025 versus the previous corresponding period in the year prior.

Torsby Desk



Anemoia (AN-uh-MOY-uh)

Coined by The Dictionary of Obscure Sorrows to refer to “nostalgia for a time never known”, *anemoia* encapsulates both the emotional connection and the aesthetic appreciation of the 1970s, highlighting the psychological need for comfort and familiarity during times of rapid change.



Marilyn Table

“Nostalgia
for a time
never
known.”

A modern living room interior. In the center is a plush, brown velvet sofa with two cushions: a solid brown one and a black and white striped one. In front of the sofa are two small, round side tables with dark, veined marble tops and dark wood legs. To the right, a white sideboard holds a lamp with a white, conical shade, several books, and a vase of red flowers. Two framed abstract paintings hang on the wall behind the sofa. The floor is covered in a light-colored, textured rug. The overall atmosphere is warm and contemporary.

feel

Making
the past

brand
new.

Martini moment

Zina Subway Tile

Aldric Ottoman



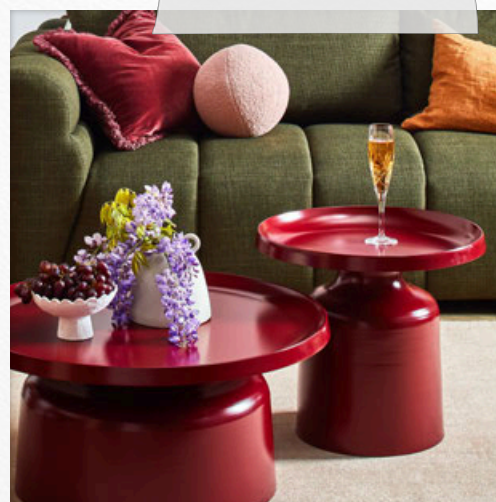
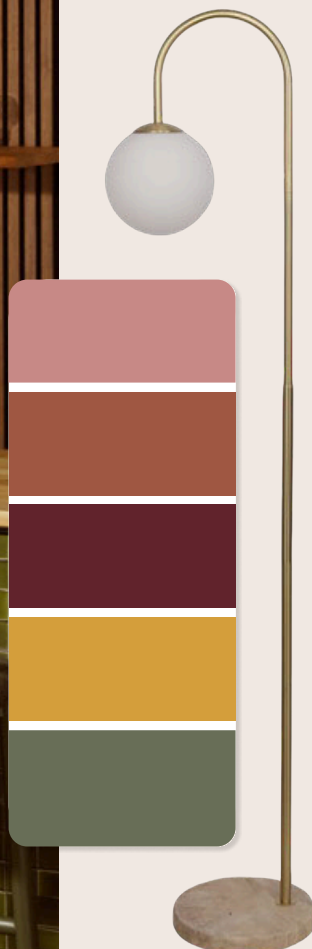
Pippa Lamp



Walnut statements



Rhet Sideboard



Merlot mania

Clovelly Collection



Moody...

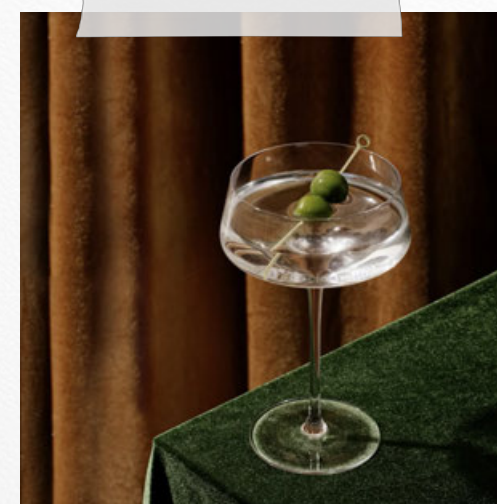
Roselin Boucle



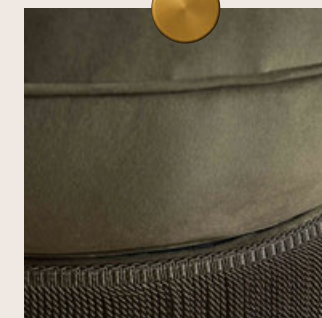
Orlena Cushions



Bahamas Bar Cart



Velvet dream



Fringe details



Vintage fabric

Old school cool

Moab Sofa



1. To create a cosy and grounded 70's vibe, layer rust, terracotta and merlot tones across velvet, chenille and woven knits. Think tone-on-tone cushions, throws and wall art for a sophisticated but inviting feel.

Quinn Sofa ↗

PAST FORWARD

Get the look

↖ Chin Chin Wall Art

2.

Bar carts are a fun way to add a 70's-style focal point to your living area. Create a display with an eclectic collection of cocktail glasses, bottles and accessories to raise your entertaining game.



Retro

3.

Add a touch of retro flair with amber glass vases, ribbed textures, and a curated stack of coffee table books.

↖ Palazzo Side Table



4.

Combine and layer textures such as a glossy side table and a velvet statement chair to create a '70's-style nook in your space.



←
Lola Side
Table



6.

Drench your space in one bold hue like this rich red for a cocooning, 70s-inspired vibe. Use the same tone across walls, furniture, and decor, and layer in texture to complete the look.



↗
Hex Side Table

Flair

5.

Use multifunctional pieces like these Hepburn storage ottomans to tuck away throws and magazines while also adding a pop of colour to your room.



↖
Hepburn
Ottoman



THE LUXURY OF FEELING GOOD AT HOME

Sumptuous Sanctuaries

↗
Misha Table



Sumptuous Sanctuaries reflects the growing desire for spaces that support wellbeing, where comfort and calm are built into every detail. How your space feels affects how you feel. In a world that rarely slows down, home has become our sanctuary, a place to retreat, recharge, and truly exhale.

According to Temple & Webster national research*, 57% of Australians feel the need to create a space at home where they can clear their mind and reflect.

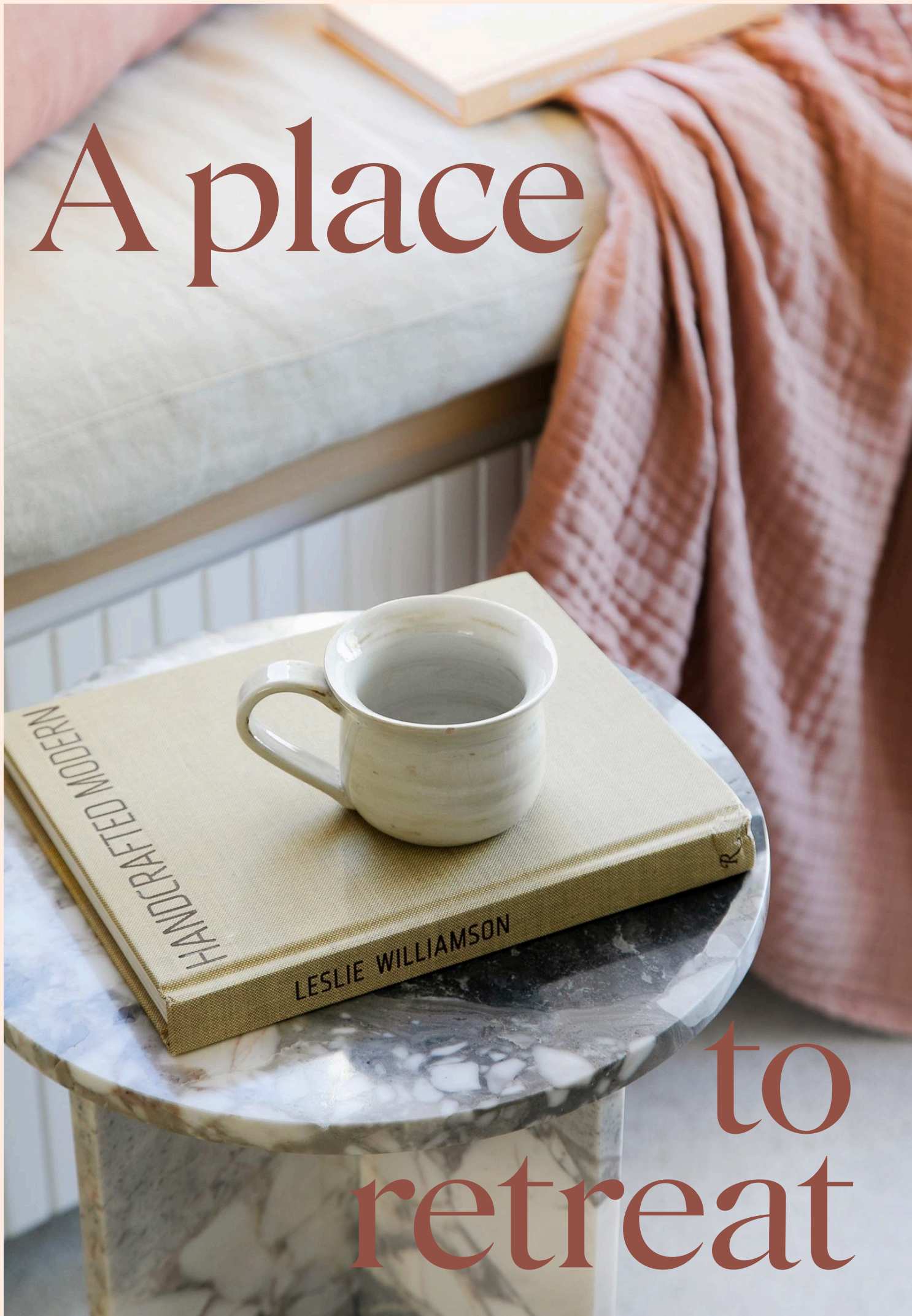
Your Sumptuous Sanctuary is all about creating a home that helps you slow down and switch off through comfort-first design. It feels luxurious without being overdone. A combination of calming tones, layered textures, and natural materials to ease stress and elevate the everyday living experience.

It's a new kind of luxury: quiet, grounded, and deeply restorative. A base of warm neutrals and gentle, earthy hues sets a serene mood, while tactile elements like ribbed finishes, tonal weaves and richly veined stone add depth and elegance. Everything is designed to feel good: visually, physically, emotionally.

Inspired by nature, shapes flow with ease. Curved timbers, sculptural forms, and soft silhouettes bring a sense of organic harmony to the space. Plush, oversized seating offers comfort that cocoons and supports. From the materials to the mood, this is design that nurtures, that invites you to slow down and create a home that truly restores.

It's a reminder that true luxury lies in how a space makes you feel.

*Source: Temple & Webster research study of 1000 Australians aged 18-74 who have purchased furniture and homewares in the last 12 months. Conducted by Zenith Media, April 2025.



A place

to retreat

Rock Stars

With sales of our marble and travertine products increasing by 25%*, Aussies are gravitating toward a new kind of luxury. We're choosing materials that ground us, calm us and offer enduring beauty.

*Based on Temple & Webster sales from 1 Jan to 31 May 2025 versus the previous corresponding period in the year prior.

25% ↑
Sales of marble and travertine

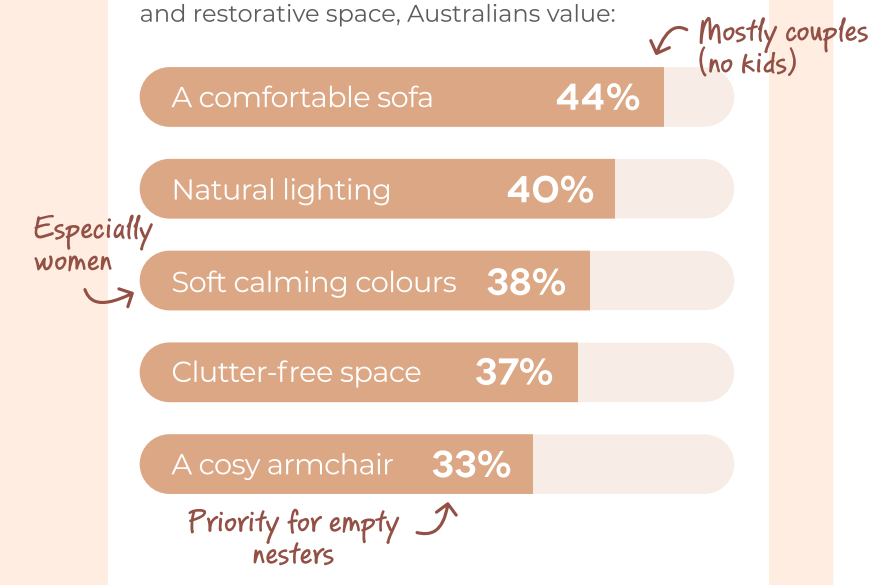
Mia Side Table



THE PULSE

Comfort factors

When it comes to the elements of a soothing and restorative space, Australians value:



*Source: Temple & Webster research study of 1000 Australians aged 18-74 who have purchased furniture and homewares in the last 12 months. Conducted by Zenith Media, April 2025.

185% ↑ Searches for swivel armchairs

As searches for "swivel armchairs" spin upward by a colossal 185%*, it's looking like we're turning to interior pieces that soothe and cocoon. Swivelling is the new rocking and it's reshaping how we relax.

*Based on Temple & Webster top keyword searches from 1 Jan to 31 May 2025 versus the previous corresponding period in the year prior.

Benji Armchair

Swivel, rest, repeat...



A modern kitchen interior featuring a curved marble countertop, a stone wall, and wooden stools. The scene is bright and minimalist, with a focus on natural materials and clean lines. The text "Simplicity" is overlaid in a large, elegant serif font on the left side of the image.

Simplicity

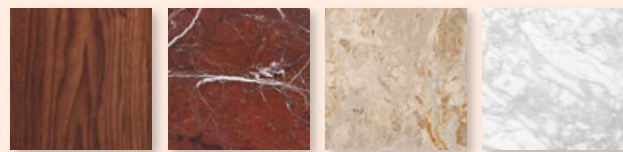
meets
warmth.



Soft chenille



natural
texture



Curves

Modular design



Travertine



Miles Pendant Light



Lennox Side Table



Viola Sconce



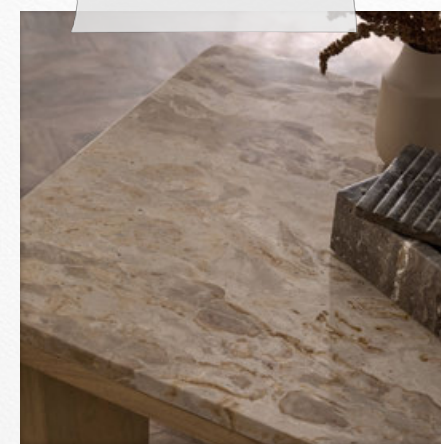
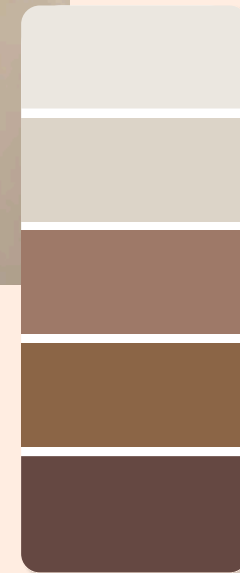
Ribbed travertine



Klein Dining Chair



Soline Tile



Dreaming of marble

make it
glow

1. Incorporate curved furniture and decor to soften your space. Rounded edges create a natural flow that feels calming and cocooning, perfect for pulling together a stylish and serene room.

Stevie
Sideboard

Iggy Collection

SUMPTUOUS SANCTUARIES

Get the look

2.

Odd numbers are your secret styling weapon. Arrange objects in threes or fives to create visual harmony. Layer books, sculptural pieces and greenery for shelves that feel intentional and grounded.

3.

Add greenery to embrace biophilic design. Green soothes the senses, while natural shapes and textures bring tranquility and a deeper connection to nature; essential for creating a truly restorative space.





→
Conrad Office
Chair

4.

Choose curved shapes, soft textures, and natural materials to turn your home office into a soothing space that inspires focus without sacrificing style, comfort or that sanctuary at home feeling.



Frida Sofa
Bed →

5.

Mix cushion shapes, sizes, and textures to add depth and warmth. Try a bold pattern, a plush plain throw pillow, and a soft woven throw for a look that feels layered and inviting.



Archie Bed
←

6.

Repeat colours you love by using the same tone across cushions, art and accent decor to create a cohesive look that feels calm, considered and beautifully balanced.



Imagine making
your home a haven
of style.

TEMPLE & WEBSTER

About Temple & Webster

Temple & Webster is Australia's largest pure play online retailer in furniture and homewares. We believe beautiful spaces play an essential part in quality of life, and should be available to everyone regardless of where you live or your budget.

Our vision is to make the world more beautiful, one room at a time, and we do this by ensuring that we have the very best range of products for your home. We are known for having the latest styles, best value and an unrivalled range, matched with fast shipping around Australia, and world-class customer service.

Latest styles & on-trend collections

With new products covering the latest global trends landing all the time, we always have something beautiful to discover. To help consumers shop, our team of style experts curate Shoppable Rooms including more than 400 Room Ideas showcasing a wide range of looks. Product videos, buying guides and shopping filters also help consumers make the right choices for their spaces.

An unrivalled range for the home

Whether you're styling a home or renovating a bathroom, our unrivalled range ensures there's something for every space and budget. We've curated 170,000+ beautiful furniture, homewares and renovations products across a variety of price points and our Temple & Webster range designed by our in-house team offers beautiful designs at amazing prices.

Whatever you're imagining, you can find it at Temple & Webster. Shop furniture & homewares online at [templeandwebster.com.au](https://www.templeandwebster.com.au)

TEMPLE &
WEBSTER
Imagine