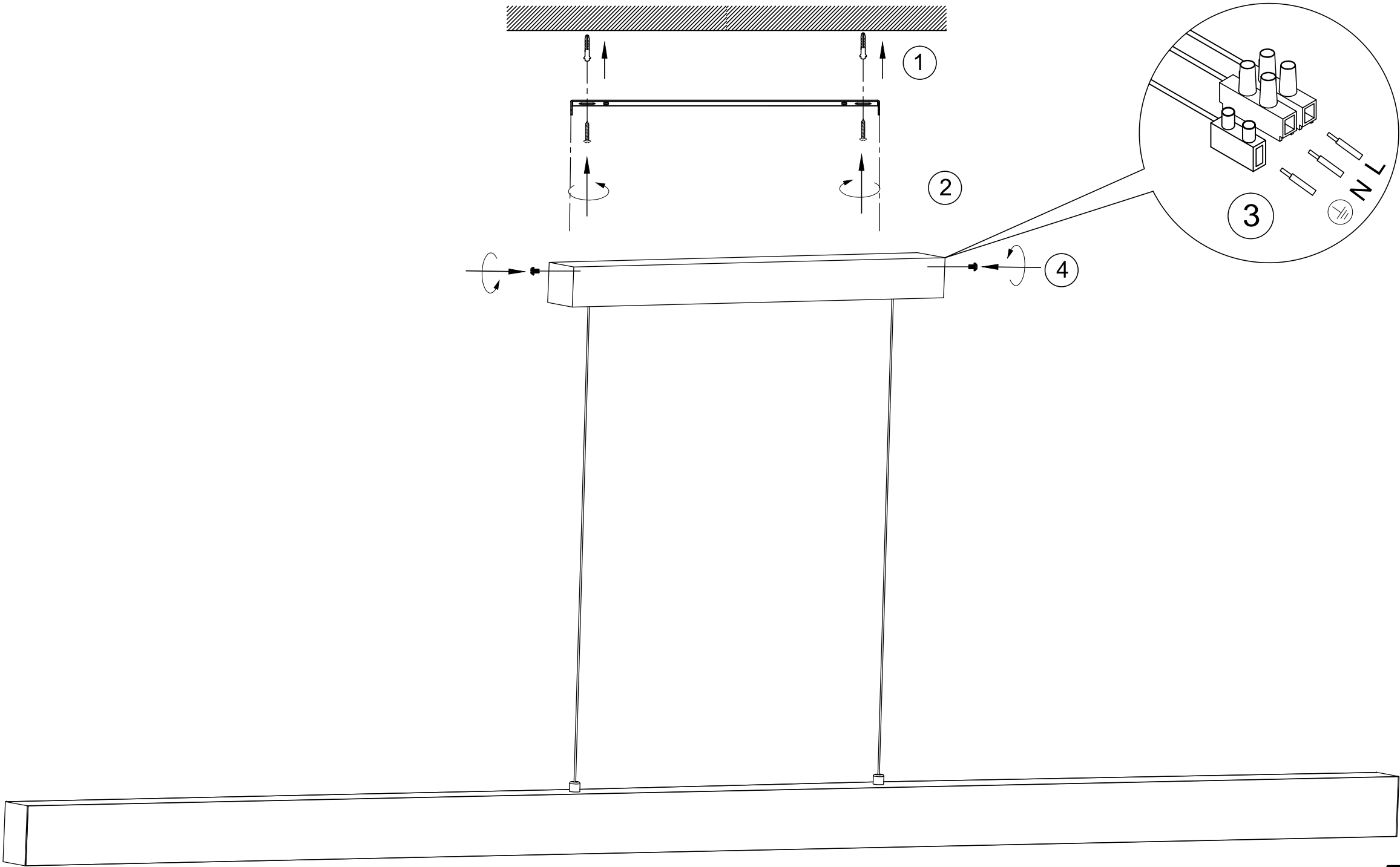


ITEM NO.:NAVARO PE120/240



Disclaimer:
Tools not included
Shade ring attached on lamp holder
Globe(s) not included

240V ~ 50Hz Led Max.40W/60W



IMPORTANT
Must be installed by
a qualified electrical
contractor.
Install in accordance
with AS/NZ3000

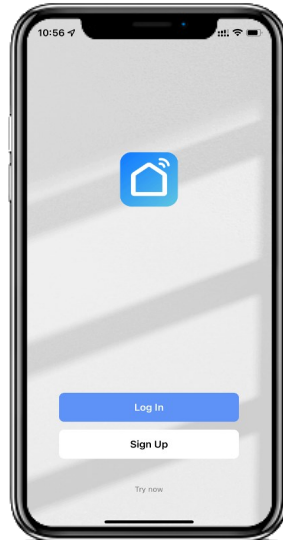
Telbix. Smart LED Device

Save as PDF →



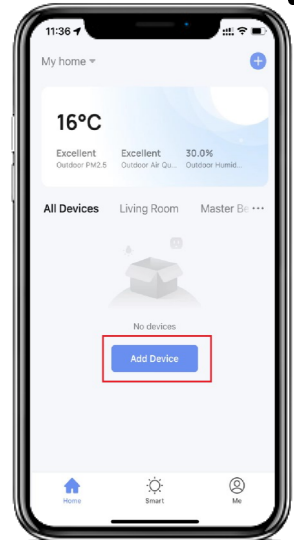
Step 1

Scan QR code and download 'Smart Life' app by Tuya.



Step 2

Log In or Sign Up an account, for a personalised experience.



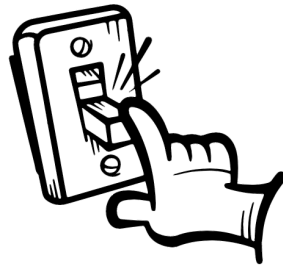
Step 3

Select 'Add Device' on the home screen.



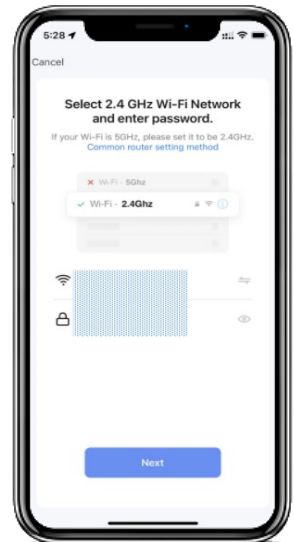
Step 4

Select 'Lighting' → 'Ceiling Light (WiFi)'. Follow the prompts.



Step 5

After installation, turn the device on-off-on-off-on (5x) to initiate pairing device. When Smart Device is in cool white mode and blinks, it indicates ready for pairing.



Step 6

Select 2.4 Ghz WiFi access from your Router or Modem for a stabled connection.



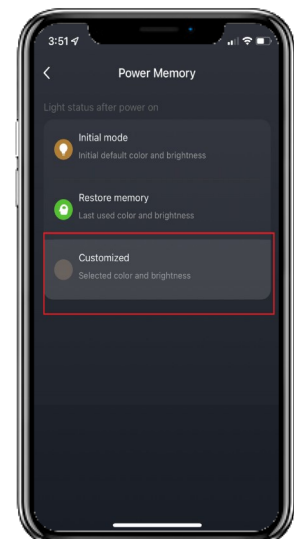
Step 7

Once paired, this allows each user a more personalised configuration, such as Kelvin temperature, Brightness, Scene, Power Memory, Timer, Schedule.

Step 8

The Smart Device can now be controlled by 'Smart Life' app.

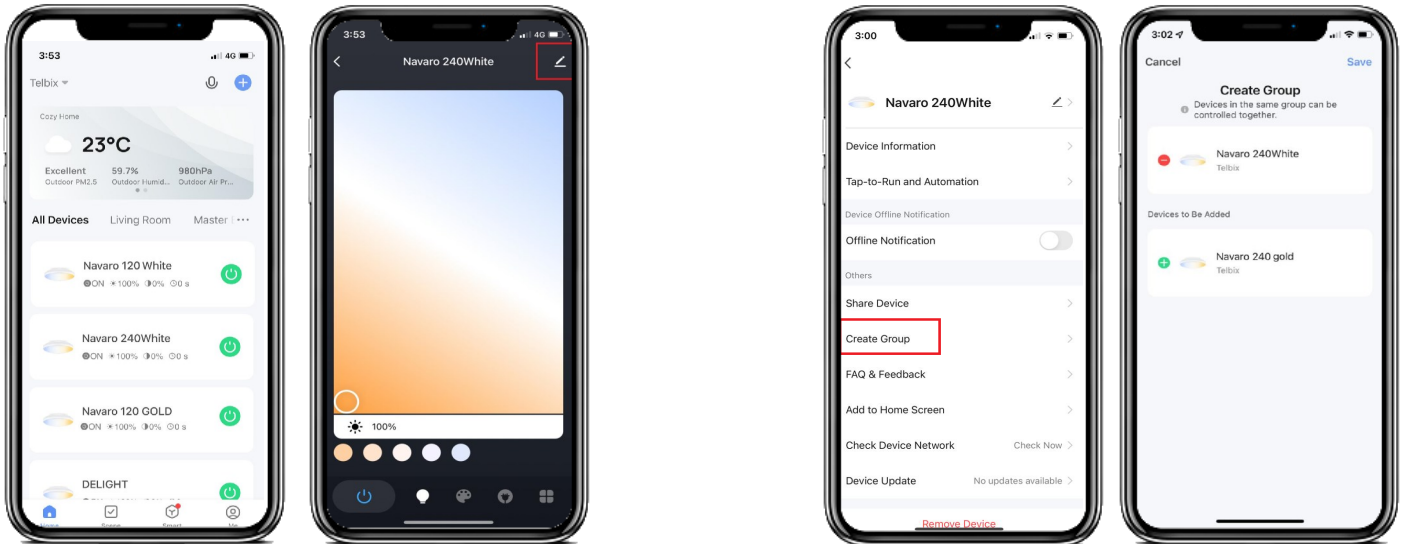
Note: Only one fixture can be paired with one device. If you wish to share the device, please use sharing.



To save the last setting, select 'Power Memory' → Select 'Customised' and set desired Kelvin temperature and brightness.

Scene Power Memory Timer or Schedule

Telbix. Grouping/Linking Multiple Smart LED devices

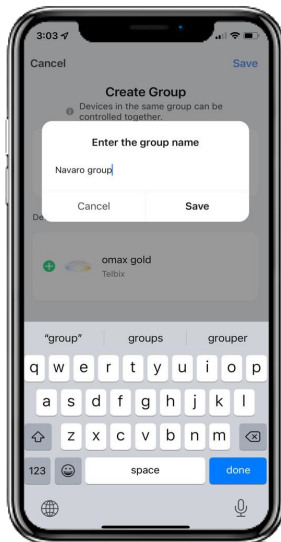


Step 1

Select any paired device.
Select the 'pencil' icon at the top right corner.

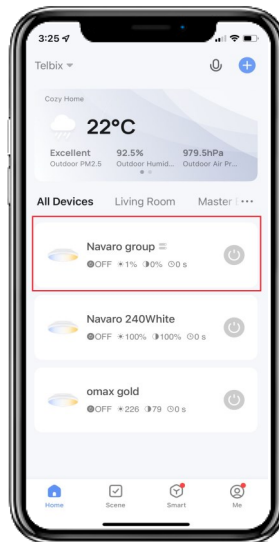
Step 2

Select 'Create Group' to combine all paired devices.
Add desired fixture to group by selecting '+', and select '-' to remove from group.



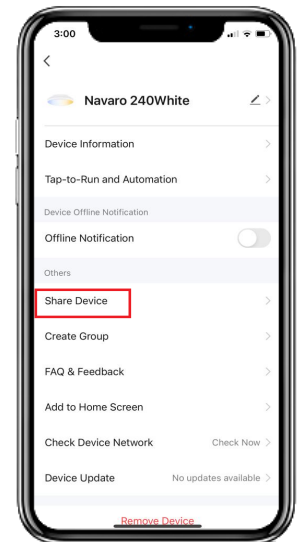
Step 3

Name the group.



Step 4

Group will show on the home screen on start-up.



Step 5

Select 'Share Device/Group' to different family member Accounts.

Troubleshoot:

1. Check that your device is powered on.
2. Ensure all devices have been added over a WiFi 2.4 GHz band and is closed to the router for faster connection.
3. Check the WiFi password you entered is correct.
4. Make sure all Smart LED devices are in 'pairing mode' when adding new device.
5. Please use the 'Add Manually' method for pairing. The 'Auto Scan' may not be able to scan your Wi-Fi device.
6. If using iOS14, make sure you allow local network permission and wireless data permission

Note: Be sure to check your internet/router coverage speed, which may cause a slight delay when changing colour/turning on and off.

Voice Commands

GOOGLE ASSISTANCE

To do this:	Say "Ok Google" or "Hey Google," then:
To turn a light on or off	"Turn on or off <light name>"
Dim a light	"Dim <light name>"
Brighten a light	"Brighten <light name>"
Set a light brightness to a certain percentage	"Set <light name> to 50%"
Dim or brighten lights by a certain percentage	"Dim <light name> by 50%"
	"Brighten <light name> by 30%"
Change the color temperature	"Change <light name> to 2700 kelvin" (2700-5500 range)"
	"Set <light name> to bright white"
	"Set <light name> to candlelight"
Turn all lights in room on or off	"Turn on or off lights in <room name>"
Turn all lights on or off	"Turn on or off all of the lights"

ALEXA

To do this:	Say "Alexa", then:
To turn a light on or off	"Turn on or off <light name>"
Dim a light (25% dimmer)	"Dim <light name>"
Brighten a light (25% brighter)	"Brighten <light name>"
Set a light brightness to a certain percentage	"Set <light name>] to 75 percent brightness."
Dim or brighten lights by a certain percentage	"Dim <light name> by 50%"
	"Brighten <light name> by 30%"
Change the color temperature	
	"Set <light name> to bright white"
	"Set <light name> to candlelight"
Turn all lights in room on or off	"Turn on or off lights in <room name>"
Turn all lights on or off	"Turn on or off all of the lights"