

ASSEMBLY INSTRUCTIONS

YSEIEABK YAEIEWHG

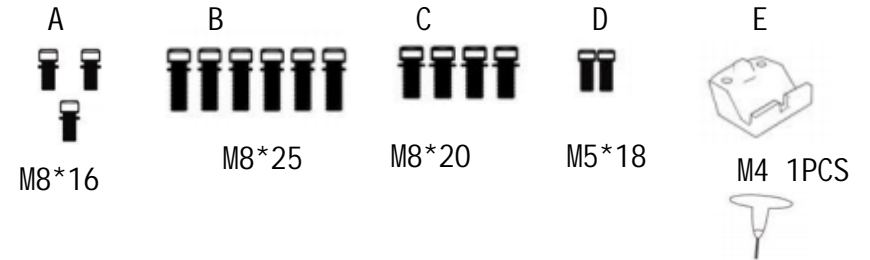
Read these instructions and follow steps carefully to ensure you assemble the product correctly and avoid damages. Check that all parts and hardware have been provided before assembling

▲ CAUTION

Only tighten the bolts to 80% at first. Once all parts have been assembled, fully tighten all hardware. To prevent damage to threads, do not use a power tool and do not overtighten bolts. Use two people to lift and turn the product when assembling. Do not attempt with only one person as do not roll onto legs. Keep all hardware and small parts away from children.



H A R D W A R E L I S T

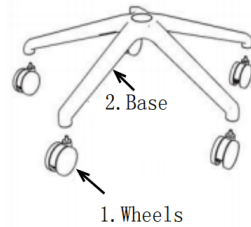
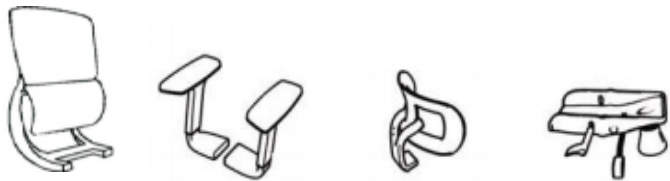


P A R T L I S T

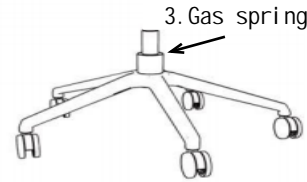
1. Wheel s 2. Base 3. Gas spring 4. Seat



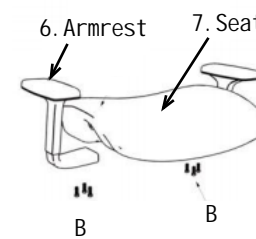
5. Back 6. Armrest 7. Pi llow 8. Mechanism



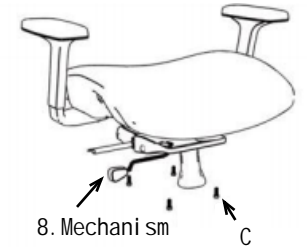
1. Attach castor on base



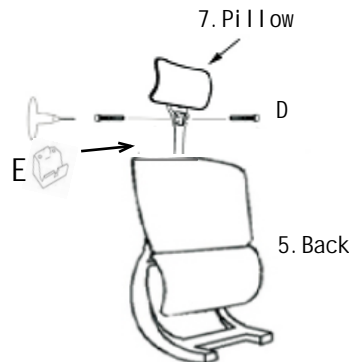
2. Attach gas spring on base



3. Install armrest on seat



4. Install mechanism on seat



5. Install headrest on back



6. Install back on seat



7. Attach chair body on base