

ASSEMBLY INSTRUCTIONS

PAGE: 1/4

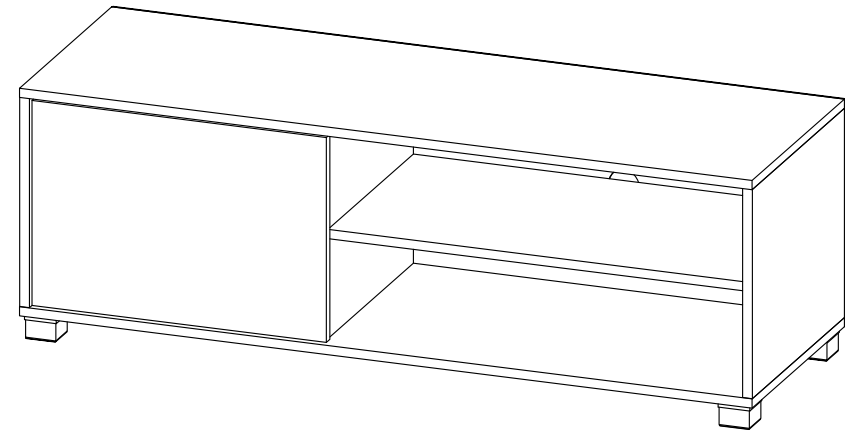
MODEL : UH 7270



Before you begin, please follow assembly instructions carefully, then follow them step by step.

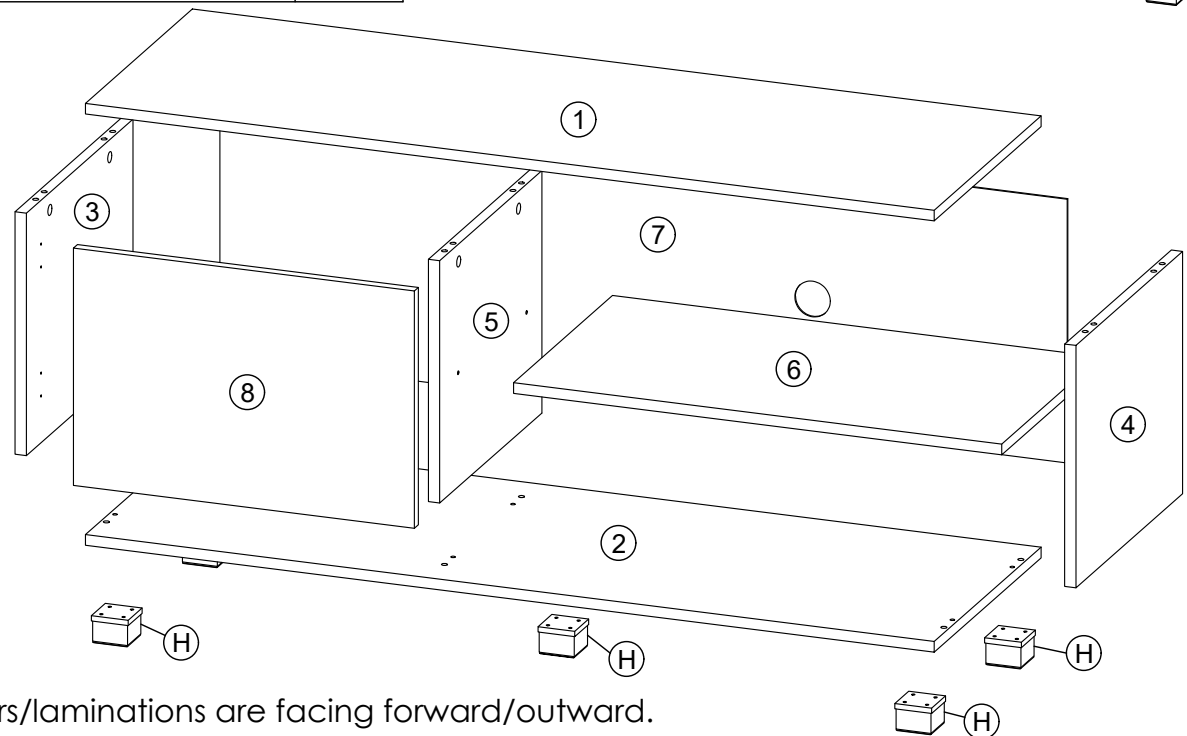
Read instruction carefully . See Furniture Parts list and Hardware List for guidance . Be sure you have all parts before you start assembling .
Place and assemble furniture on a clean flat soft surface , such as carpet or rug to prevent being scratched .

PART LIST		QTY
1	TOP PANEL	1 PC
2	BOTTOM PANEL	1 PC
3	SIDE PANEL (L)	1 PC
4	SIDE PANEL (R)	1 PC
5	CENTER PANEL	1 PC
6	SHELF PANEL	1 PC
7	BACK PANEL	1 PC
8	DOOR PANEL	1 PC

HARDWARE					
A	MINI FIX	A1	A2	A3	6 SETS
B	M8 X 30MM WOOD DOWEL				12 PCS
C	M6 X 50MM CSK CAP WOOD SCREW				6 PCS
D	ALLEN KEY M4				1 PC
E	M3.5 X 16MM C.B SCREW				32 PCS
F	5/8 NAIL				22 PCS
G	METAL SHELF SUPPORT				4 PCS
H	PVC SQUARE LEG 39 MM				5 PCS
I	SOFT CLOSING 7/8 HINGES				2 PCS



SELF-PREPARED TOOLS: Tools below are NOT included in package.	
 SCREWDRIVER	 HAMMER



Reminder:

Please ensure that all surfaces and edges with colours/laminations are facing forward/outward.

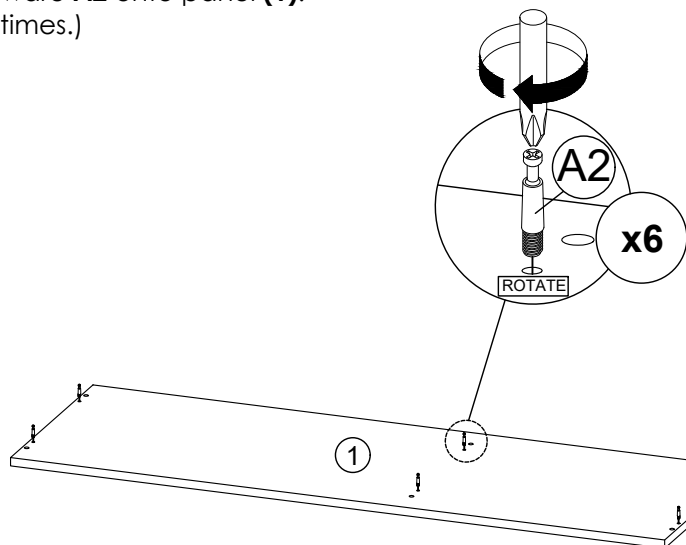
ASSEMBLY INSTRUCTIONS

PAGE: 2/4

MODEL : UH 7270

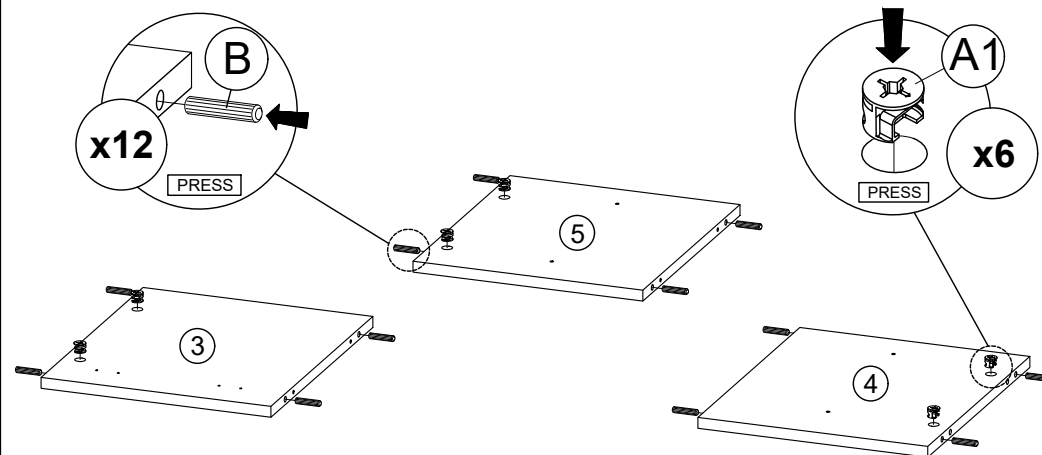
STEP 1

Insert hardware **A2** onto panel **(1)**.
(Repeat 6 times.)



STEP 2

- Insert hardware **A1** onto panel **(3)**, **(4)** and **(5)**.
(Repeat 6 times.)
- Insert hardware **B** onto panel **(3)**, **(4)** and **(5)**.
(Repeat 12 times.)



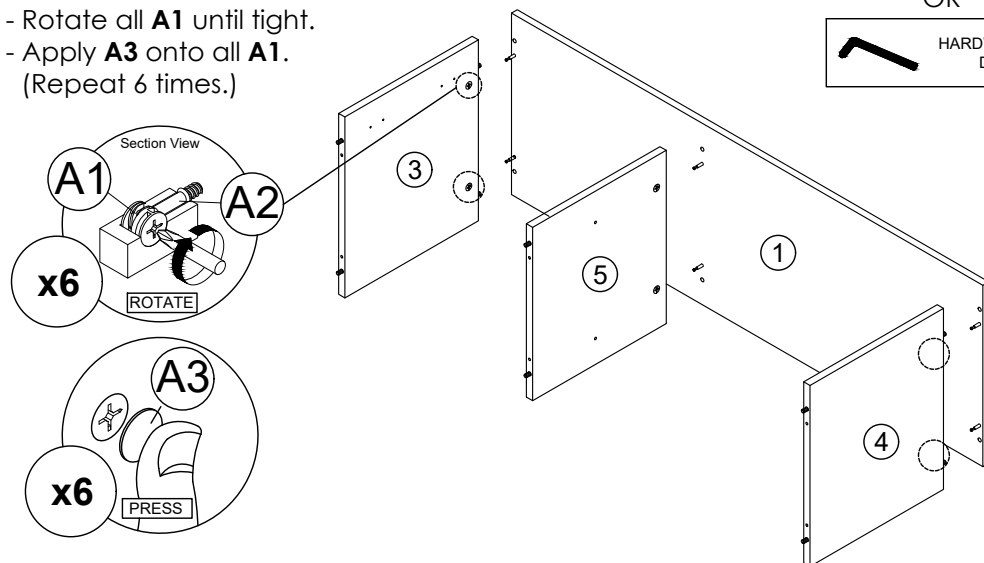
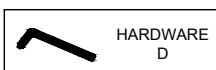
* Ensure the arrows on hardware **A1** point towards mounting positions.

STEP 3

- Attach panel **(3)**, **(4)** and **(5)** to panel **(1)**.
- Insert all hardware **A2** into **A1**.
- Rotate all **A1** until tight.
- Apply **A3** onto all **A1**.
(Repeat 6 times.)

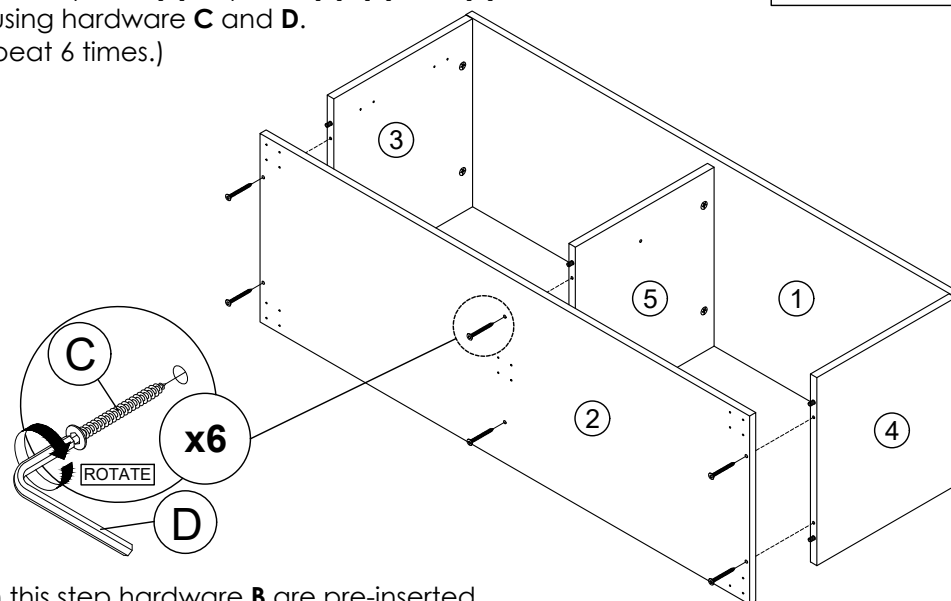
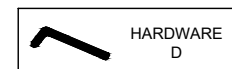


OR



STEP 4

Connect panel **(2)** to panel **(3)**, **(4)** and **(5)**
by using hardware **C** and **D**.
(Repeat 6 times.)



* In this step hardware **B** are pre-inserted.

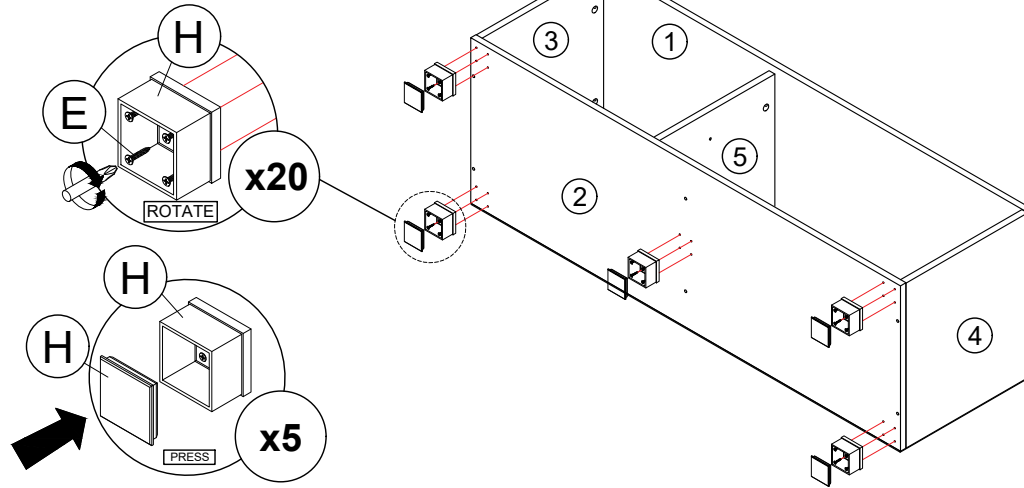
ASSEMBLY INSTRUCTIONS

PAGE: 3/4

MODEL : UH 7270

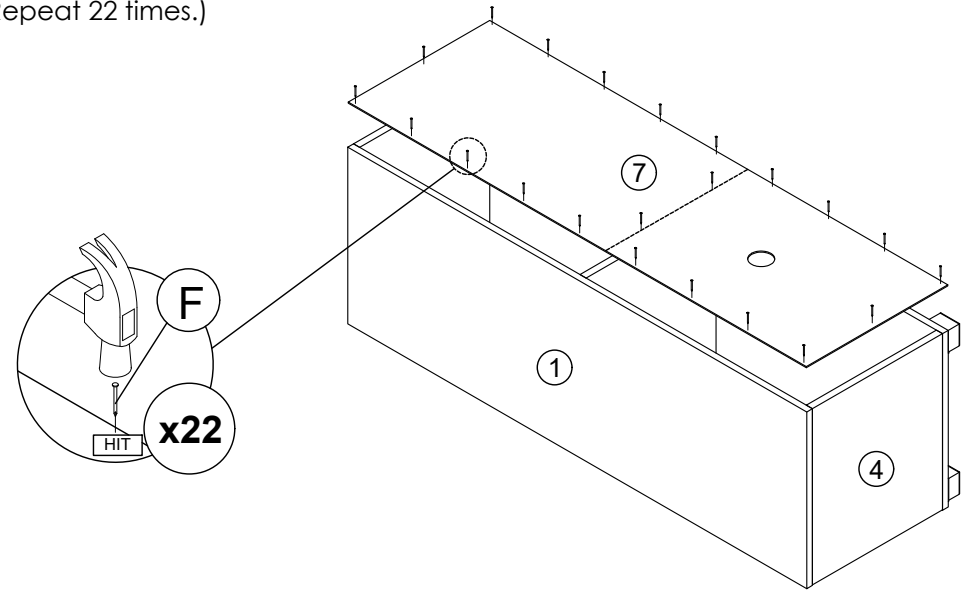
STEP 5

- Fix hardware **H** into panel **(2)** with hardware **E**.
(Repeat 4 times for each hardware.)
- Cover back the hardware **H**.
(Repeat 5 Times)



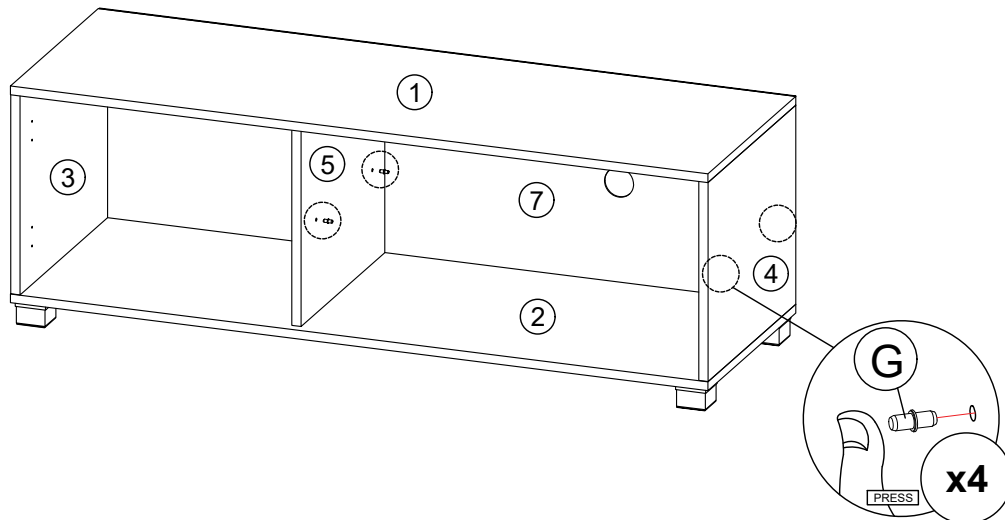
STEP 6

- Assemble panel **(7)** to entire body with hardware **F**.
(Repeat 22 times.)



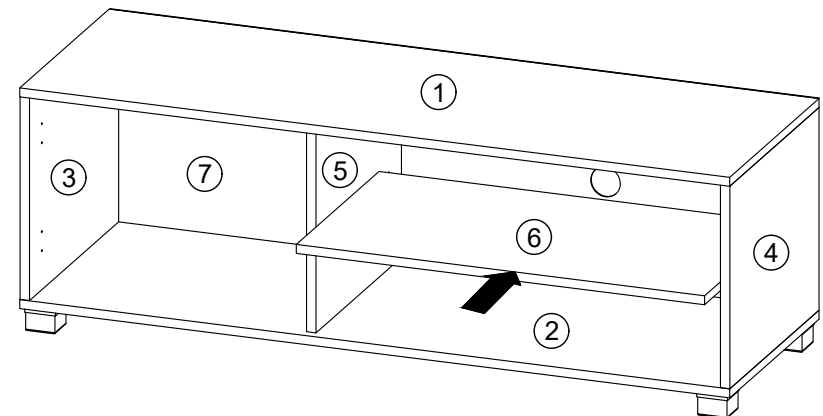
STEP 7

- Insert hardware **G** into mounting positions on panel **(4)** and **(5)** by hand.
(Repeat 4 times.)



STEP 8

- Assemble the panel **(6)** into between panel **(4)** and **(5)**.
(Repeat 1 times.)



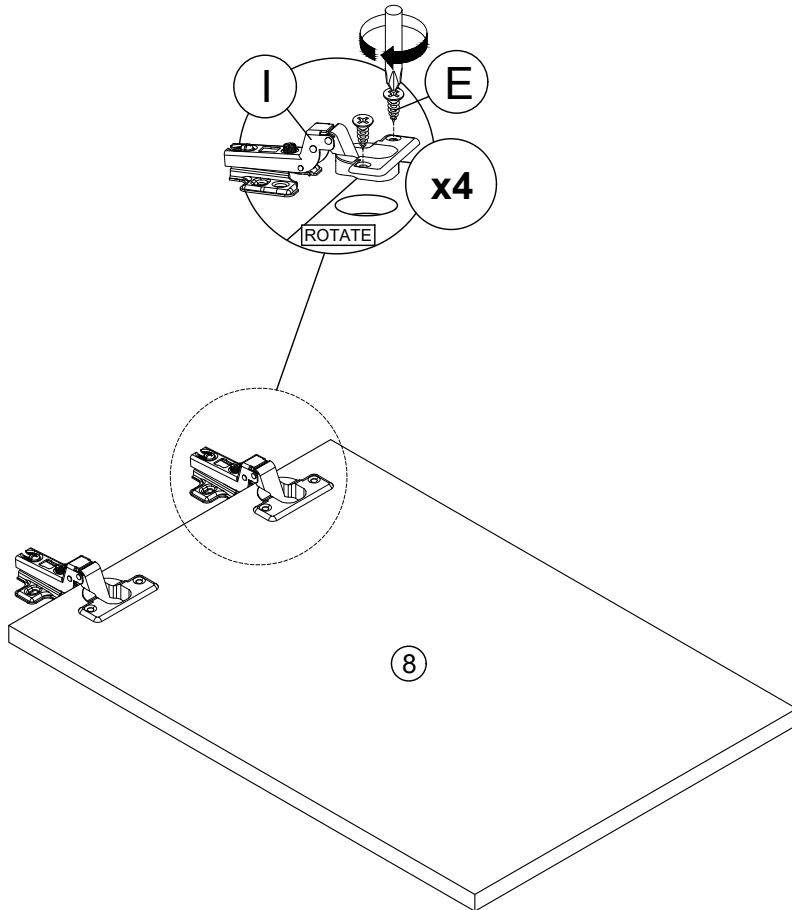
ASSEMBLY INSTRUCTIONS

PAGE: 4/4

MODEL : UH 7270

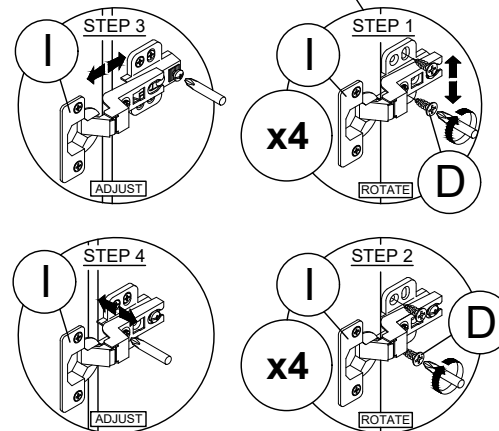
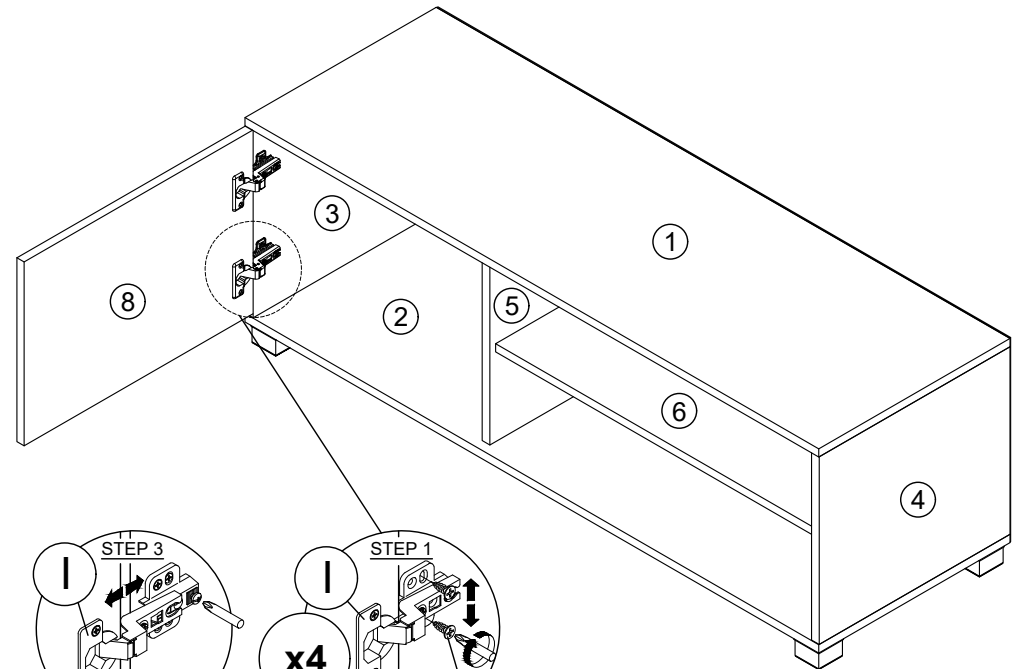
STEP 9

Fix hardware **I** onto panel **(8)** by using hardware **E**.
(Repeat 2 times for each hardware.)



STEP 10

- Fix hardware **I** into panel **(3)** by using hardware **E**.
(Repeat 2 times for each hardware.)
- Tighten or loosen the screw to adjust position of panel **(8)**.
(Do only when needed.)



* In this step hardware **I** have been assembled in panel **(8)**.