

ASSEMBLY INSTRUCTIONS


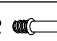
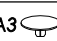

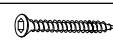



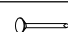





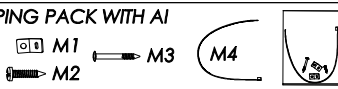
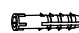
PAGE: 1/8

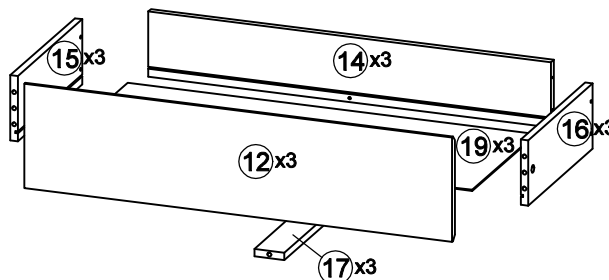
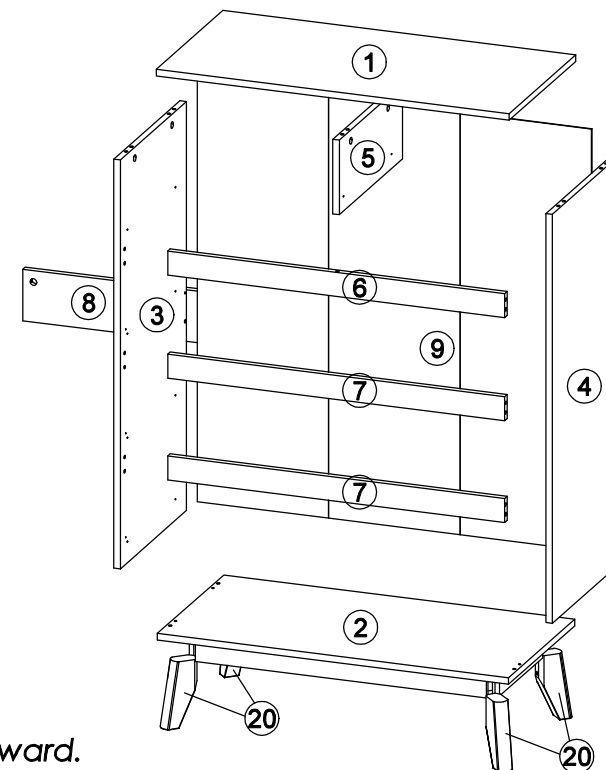
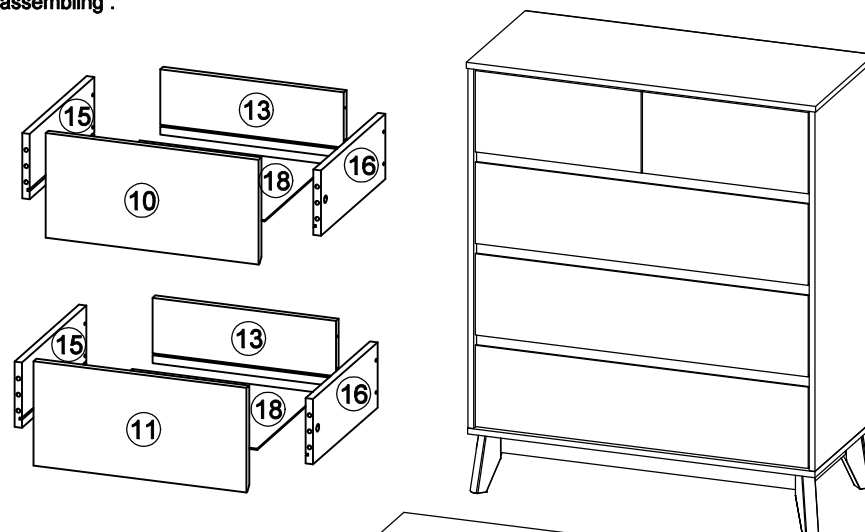
MODEL : UH 8736

Before you begin, please follow assembly instructions carefully, then follow them step by step.

Read instruction carefully . See Furniture Parts list and Hardware List for guidance . Be sure you have all parts before you start assembling .
Place and assemble furniture on a clean flat soft surface , such as carpet or rug to prevent being scratched .

PART LIST		QTY
1	TOP PANEL	1 PC
2	BOTTOM PANEL	1 PC
3	SIDE PANEL (L)	1 PC
4	SIDE PANEL (R)	1 PC
5	CENTER PANEL	1 PC
6	BONE PANEL UP	1 PC
7	BONE PANEL DOWN	2 PCS
8	BACK BONE	1 PC
9	BACK PANEL	1 PC
10	DRAWER FRONT SMALL (L)	1 PC
11	DRAWER FRONT SMALL (R)	1 PC
12	DRAWER FRONT BIG	3 PCS
13	DRAWER BACK SMALL	2 PCS
14	DRAWER BACK BIG	3 PCS
15	DRAWER SIDE (L)	5 PCS
16	DRAWER SIDE (R)	5 PCS
17	DRAWER BONE	3 PCS
18	DRAWER BOTTOM SMALL	2 PCS
19	DRAWER BOTTOM BIG	3 PCS
20	CABINET LEG	4 PCS

HARDWARE			
A	MINI FIX	A1  A2  A3 	24 SETS
B	M8 X 30MM WOOD DOWEL		45 PCS
C	M6 X 50MM CSK CAP WOOD SCREW		4 PCS
D	ALLEN KEY M4		1 PC
E	M3.5 X 16MM C.B SCREW		78 PCS
F	M4 X 38MM C.B SCREW		20 PCS
G	5/8 NAIL		22 PCS
H	ONE HOLE L BRACKET (2MM)		6 PCS
I	JCBC Screw M6 x 70		8 PCS
J	SPRING WASHER M6		8 PCS
K	FLAT WASHER M6		8 PCS
L	14" DRAWER SLIDE	 L1 (L/R) L2 (L/R)	5 SETS
M	TIPPING PACK WITH AI	 M1 M2 M3 M4	2 SETS
N	WALL PLUG (NOT INCLUDED)		-



SELF-PREPARED TOOLS: Tools below are NOT included in package.



SCREWDRIVER



HAMMER

Reminder:

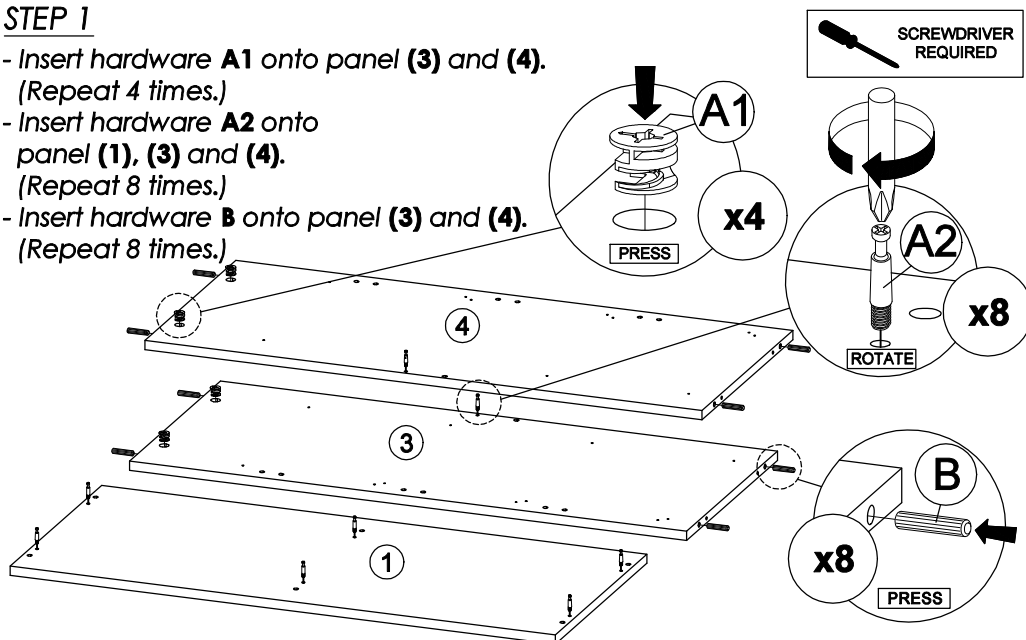
Please ensure that all surfaces and edges with colours/laminations are facing forward/outward.

ASSEMBLY INSTRUCTIONS

PAGE: 2/8

STEP 1

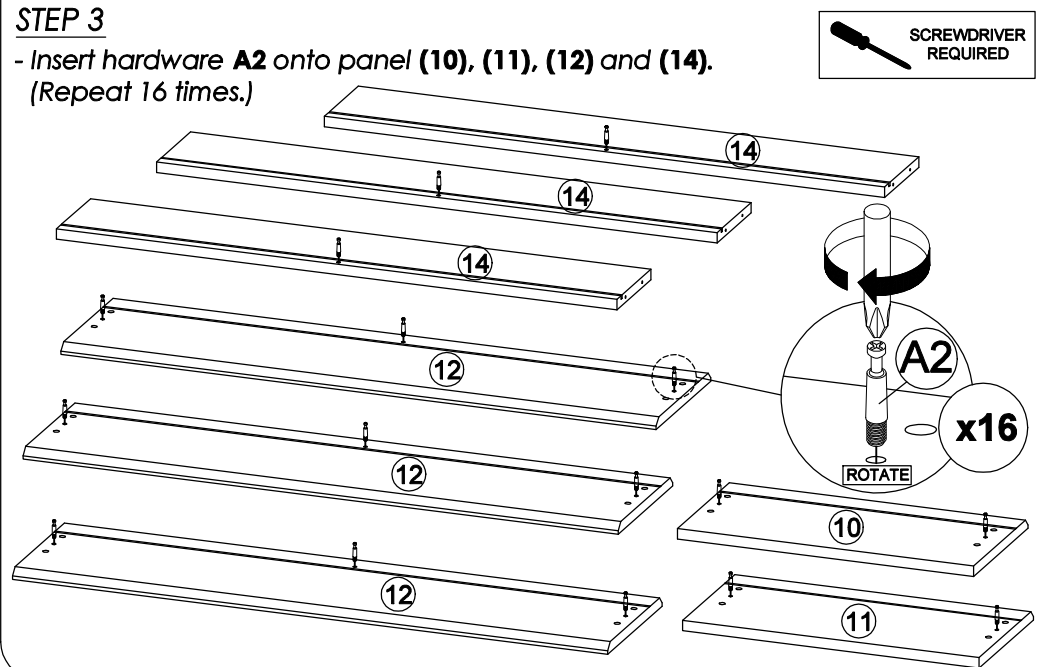
- Insert hardware **A1** onto panel **(3)** and **(4)**.
(Repeat 4 times.)
- Insert hardware **A2** onto panel **(1)**, **(3)** and **(4)**.
(Repeat 8 times.)
- Insert hardware **B** onto panel **(3)** and **(4)**.
(Repeat 8 times.)



* Ensure the arrows on hardware **A1** point towards mounting positions.

STEP 3

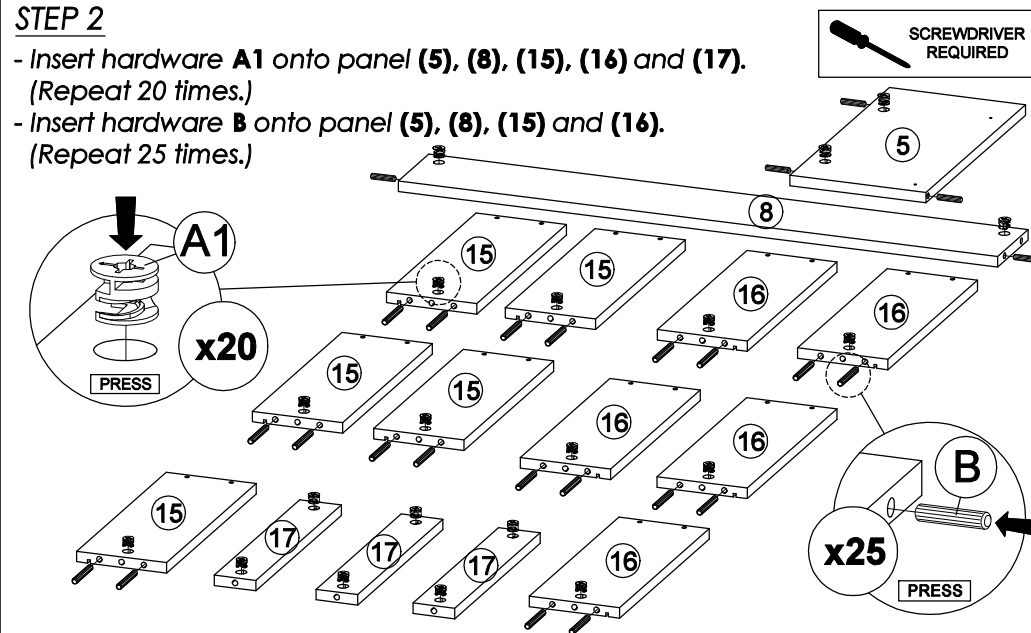
- Insert hardware **A2** onto panel **(10)**, **(11)**, **(12)** and **(14)**.
(Repeat 16 times.)



MODEL : UH 8736

STEP 2

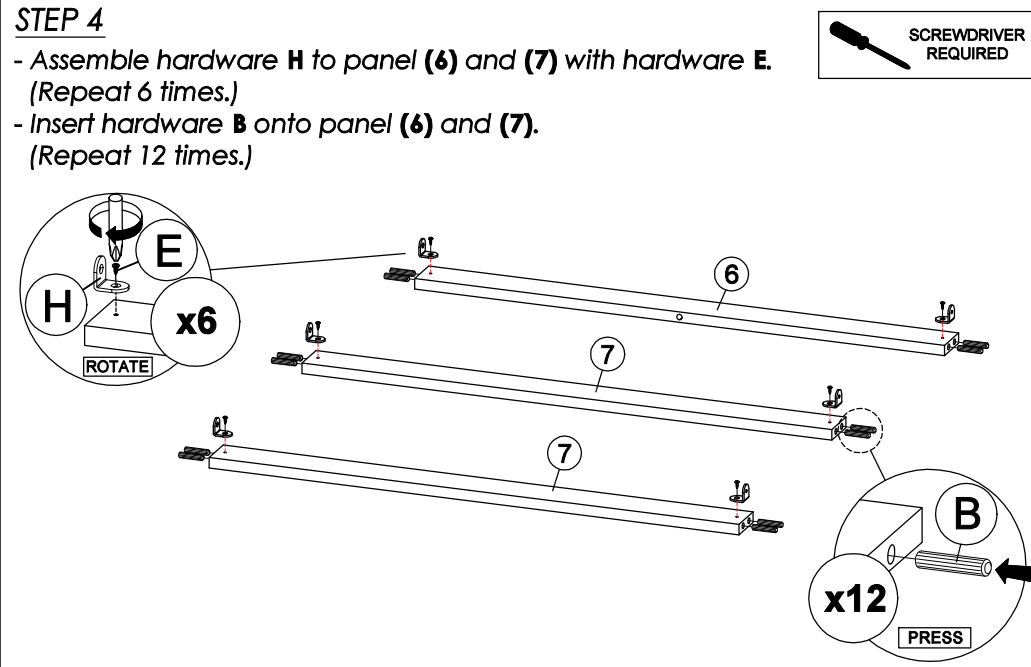
- Insert hardware **A1** onto panel **(5)**, **(8)**, **(15)**, **(16)** and **(17)**.
(Repeat 20 times.)
- Insert hardware **B** onto panel **(5)**, **(8)**, **(15)** and **(16)**.
(Repeat 25 times.)



* Ensure the arrows on hardware **A1** point towards mounting positions.

STEP 4

- Assemble hardware **H** to panel **(6)** and **(7)** with hardware **E**.
(Repeat 6 times.)
- Insert hardware **B** onto panel **(6)** and **(7)**.
(Repeat 12 times.)



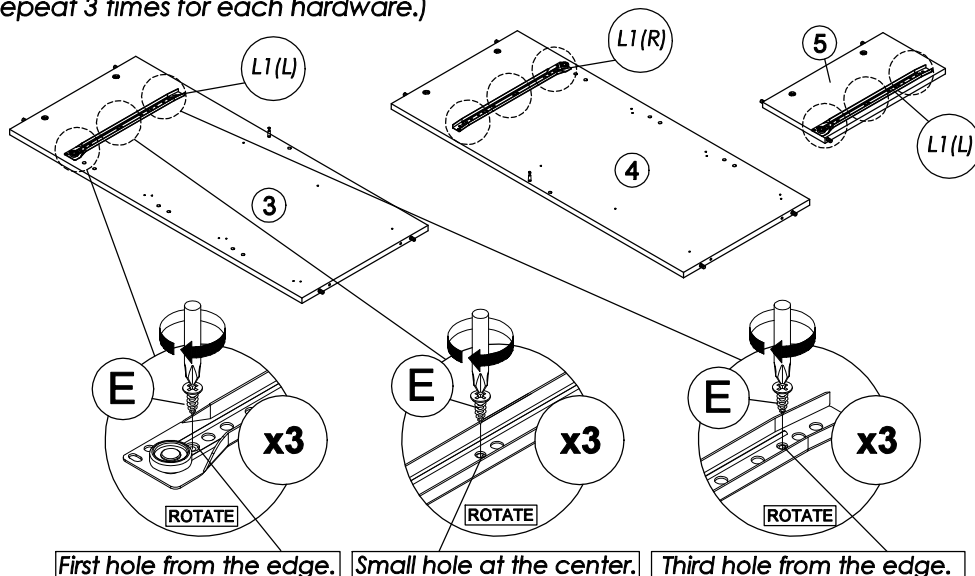
ASSEMBLY INSTRUCTIONS

PAGE: 3/8

MODEL : UH 8736

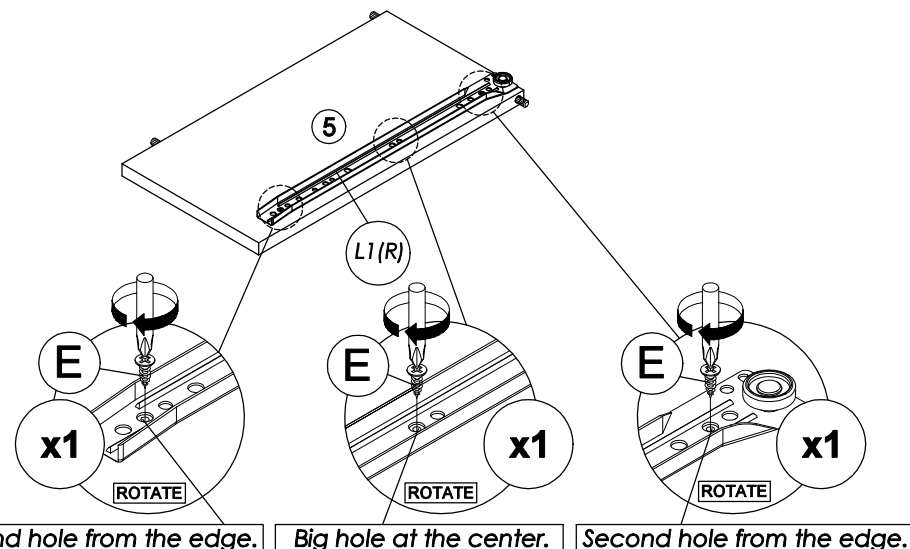
STEP 5

Fix hardware **L1 (L/R)** into panel **(3)**, **(4)** and **(5)** with hardware **E**.
(Repeat 3 times for each hardware.)



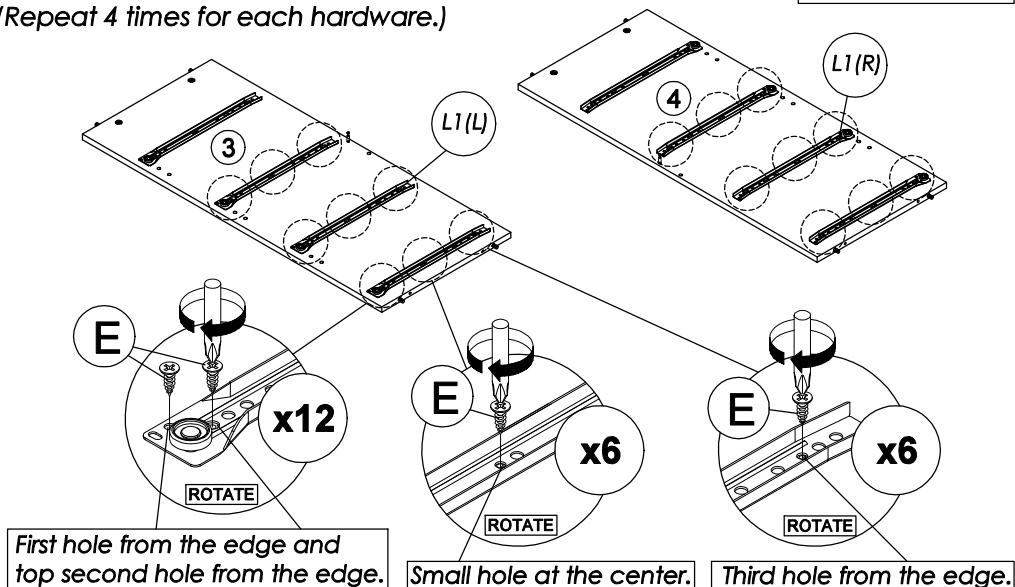
STEP 6

Fix hardware **L1 (R)** into panel **(5)** with hardware **E**.
(Repeat 3 times for each hardware.)



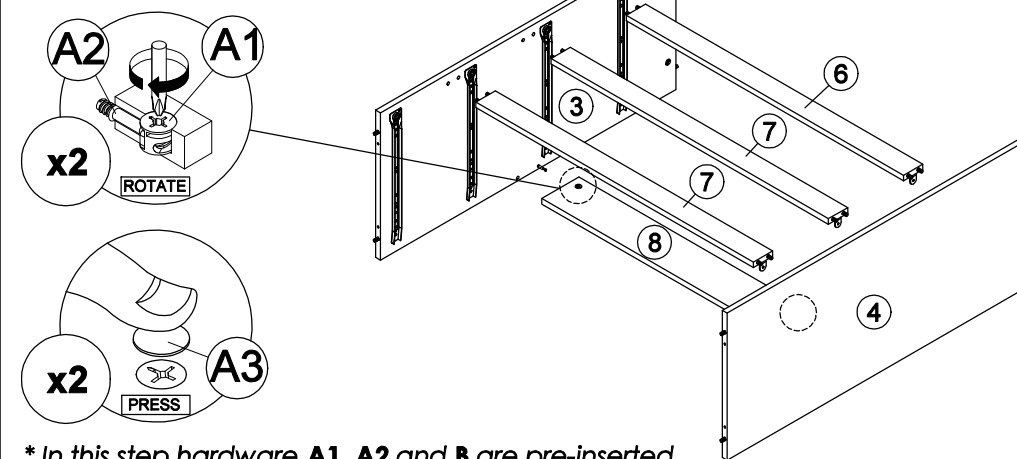
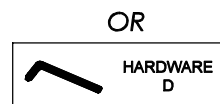
STEP 7

Fix hardware **L1 (L/R)** into panel **(3)** and **(4)** with hardware **E**.
(Repeat 4 times for each hardware.)



STEP 8

- Attach panel **(3)** and **(4)** to panel **(6)**, **(7)** and **(8)**.
- Insert all hardware **A2** into **A1**.
- Rotate all **A1** until tight.
- Apply **A3** onto all **A1**.
- (Repeat 2 times.)



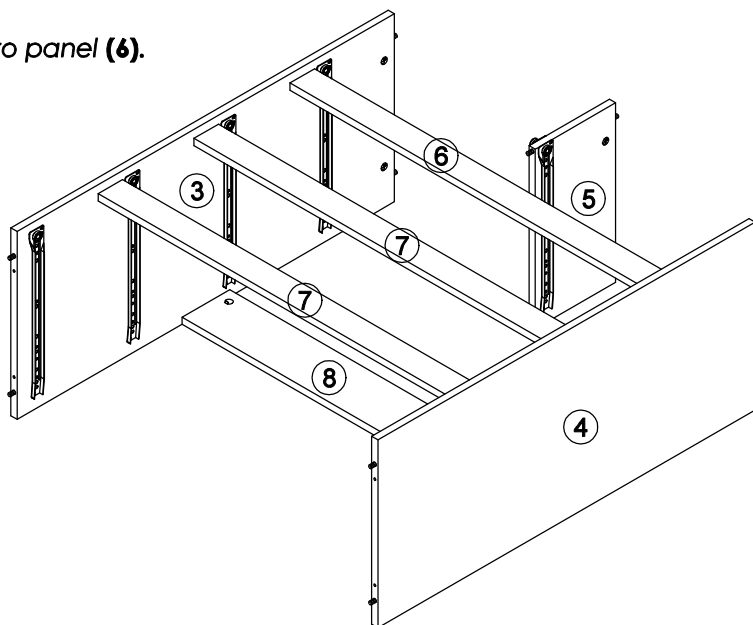
ASSEMBLY INSTRUCTIONS

PAGE: 4/8

MODEL : UH 8736

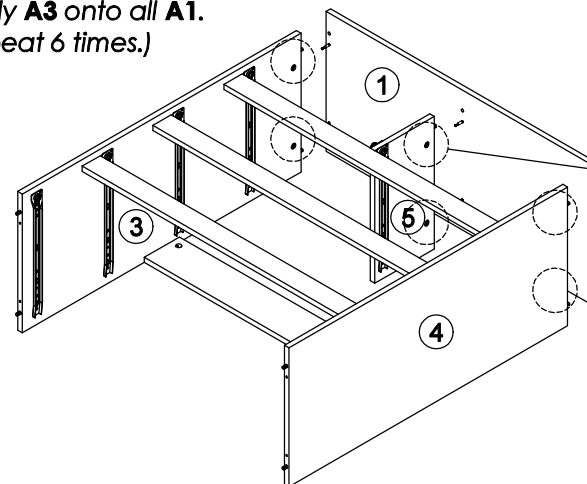
STEP 9

Attach panel (5) to panel (6).
(Repeat 1 times.)

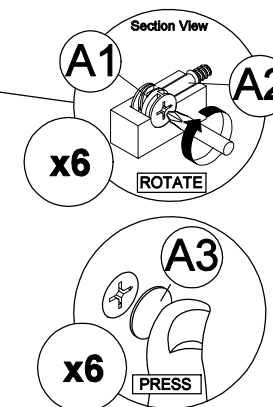
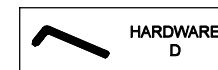


STEP 10

- Attach panel (1) to panel (3), (4) and (5).
- Insert all hardware A2 into A1.
- Rotate all A1 until tight.
- Apply A3 onto all A1.
- (Repeat 6 times.)



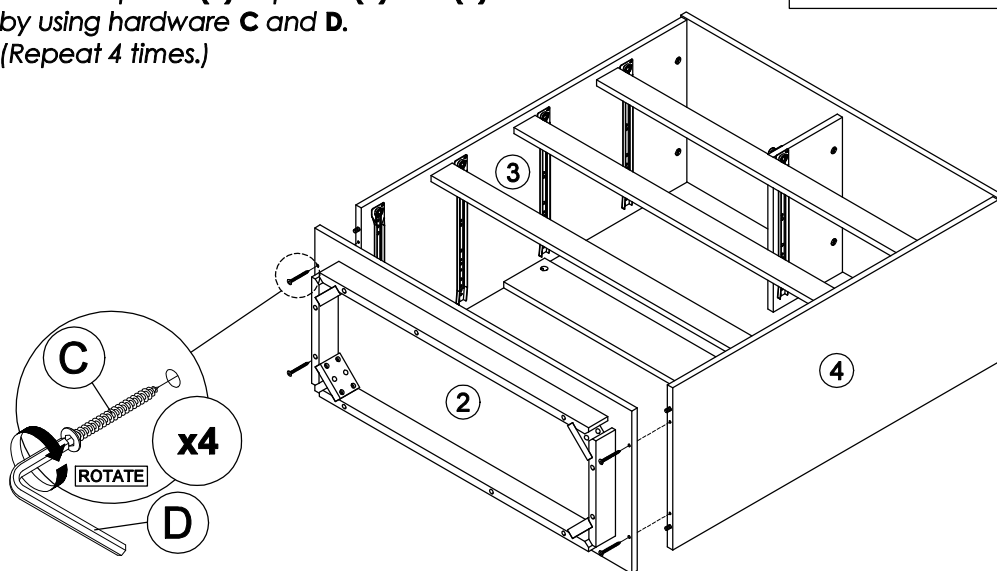
OR



* In this step hardware A1, A2 and B are pre-inserted.

STEP 11

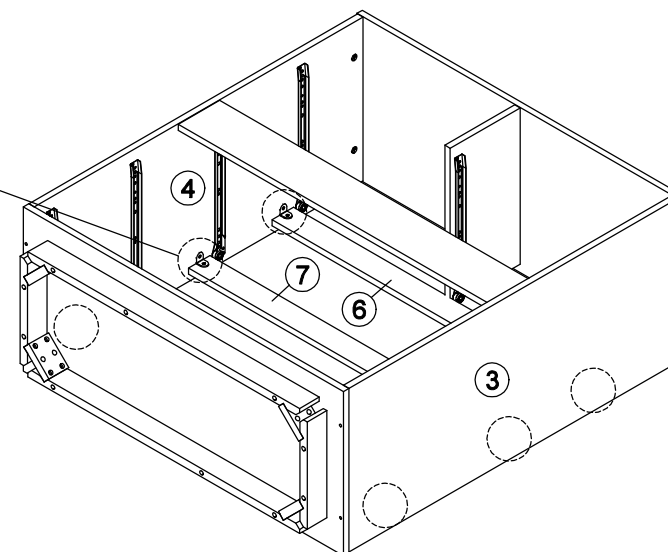
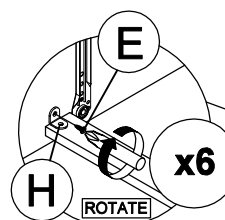
- Connect panel (2) to panel (3) and (4) by using hardware C and D.
- (Repeat 4 times.)



* In this step hardware B are pre-inserted.

STEP 12

- Assemble hardware H to panel (3) and (4) with hardware E.
- (Repeat 6 times.)



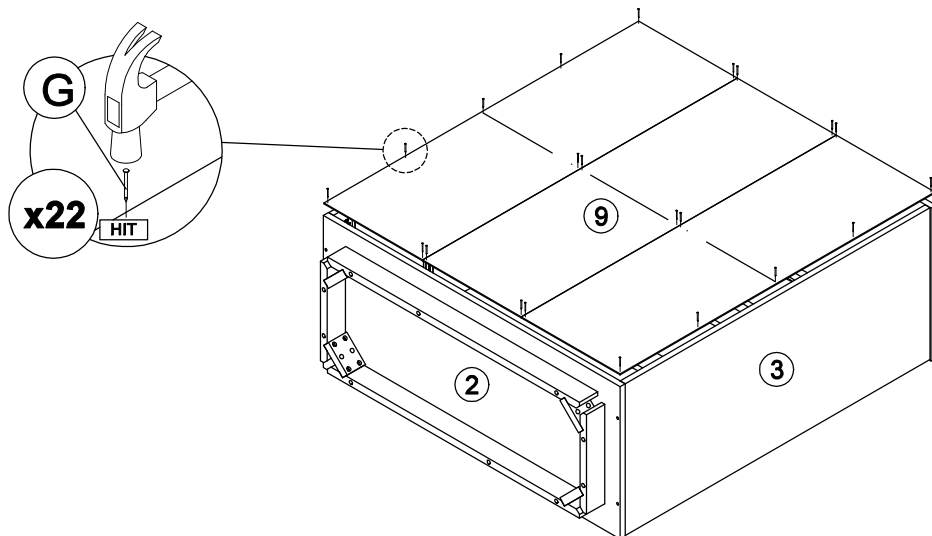
ASSEMBLY INSTRUCTIONS

PAGE: 5/8

MODEL : UH 8736

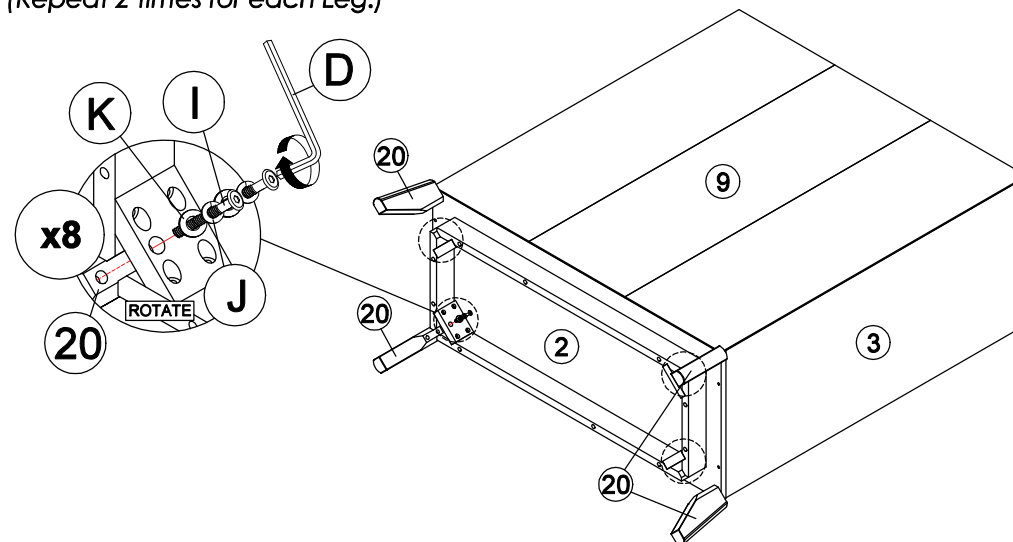
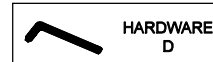
STEP 13

Assemble panel **(9)** to entire body with hardware **G**.
(Repeat 22 times.)



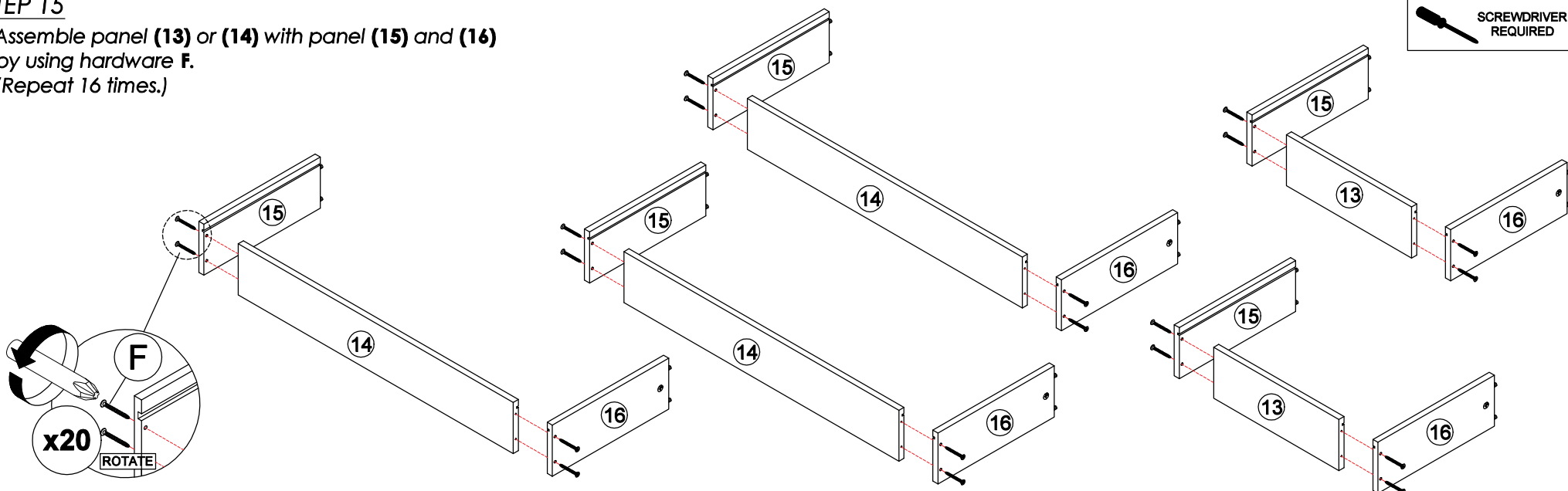
STEP 14

Assemble part **(20)** into panel **(2)** by using hardware **D, I, J** and **K**.
(Repeat 2 times for each Leg.)



STEP 15

- Assemble panel **(13)** or **(14)** with panel **(15)** and **(16)** by using hardware **F**.
(Repeat 16 times.)



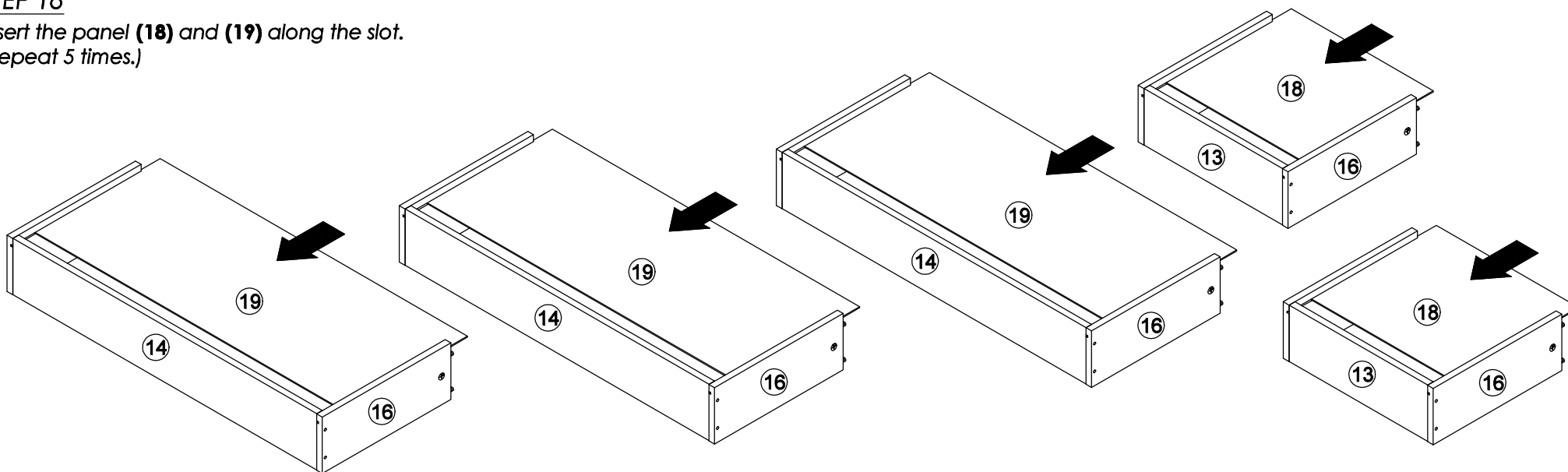
ASSEMBLY INSTRUCTIONS

PAGE: 6/8

MODEL : UH 8736

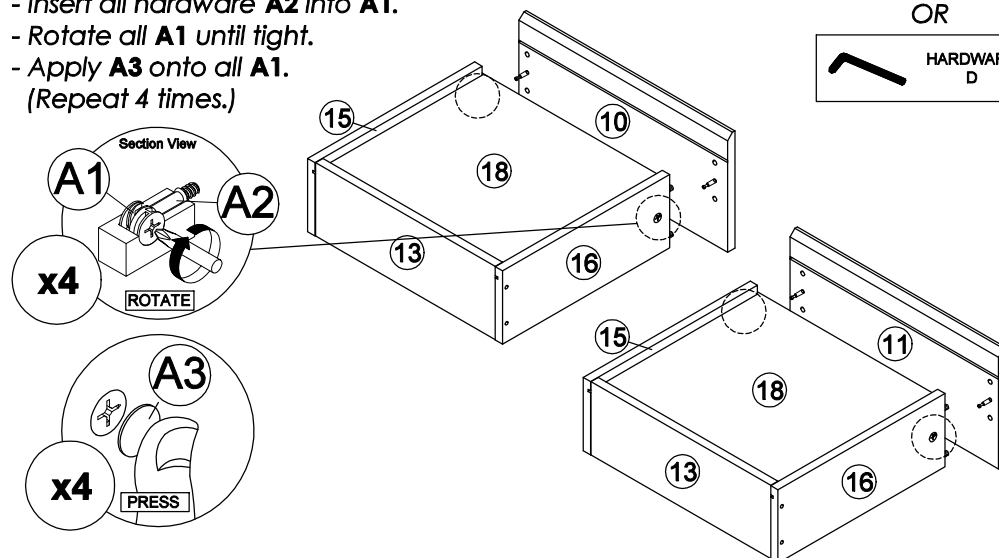
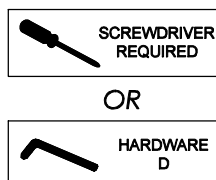
STEP 16

Insert the panel (18) and (19) along the slot.
(Repeat 5 times.)



STEP 17

- Attach panel (10) or (11) to panel (15) and (16).
 - Insert all hardware A2 into A1.
 - Rotate all A1 until tight.
 - Apply A3 onto all A1.
- (Repeat 4 times.)

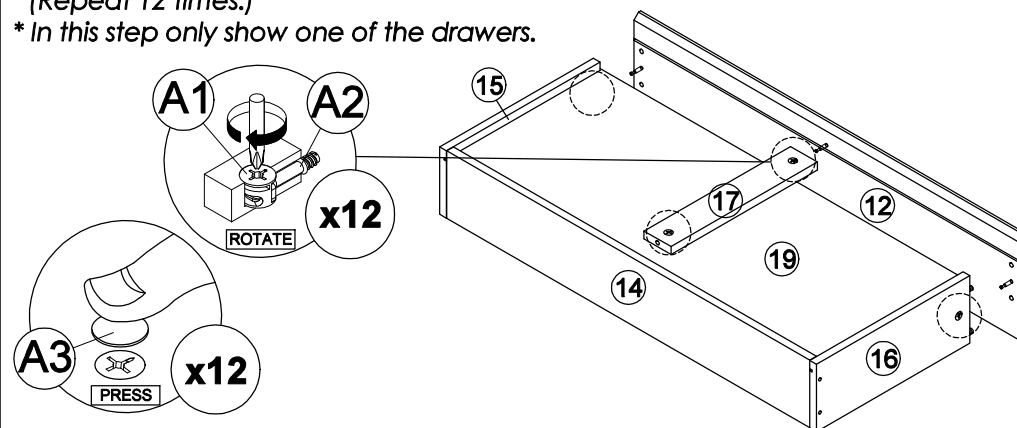
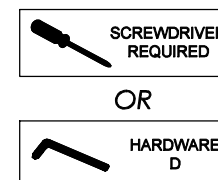


* In this step hardware A1, A2 and B are pre-inserted.

STEP 18

- Attach panel (17) to panel (14).
 - Attach panel (12) to panel (15), (16) and (17).
 - Insert all hardware A2 into A1.
 - Rotate all A1 until tight.
 - Apply A3 onto all A1.
- (Repeat 12 times.)

* In this step only show one of the drawers.



* In this step hardware A1, A2 and B are pre-inserted.

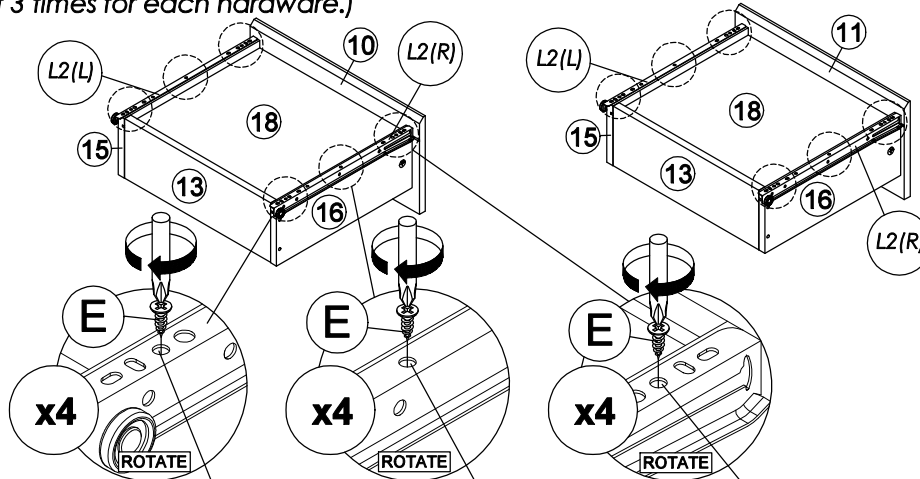
ASSEMBLY INSTRUCTIONS

PAGE: 7/8

MODEL : UH 8736

STEP 19

Assemble hardware **L2 (L/R)** to panel **(15)** and **(16)** by using hardware **E**.
(Repeat 3 times for each hardware.)

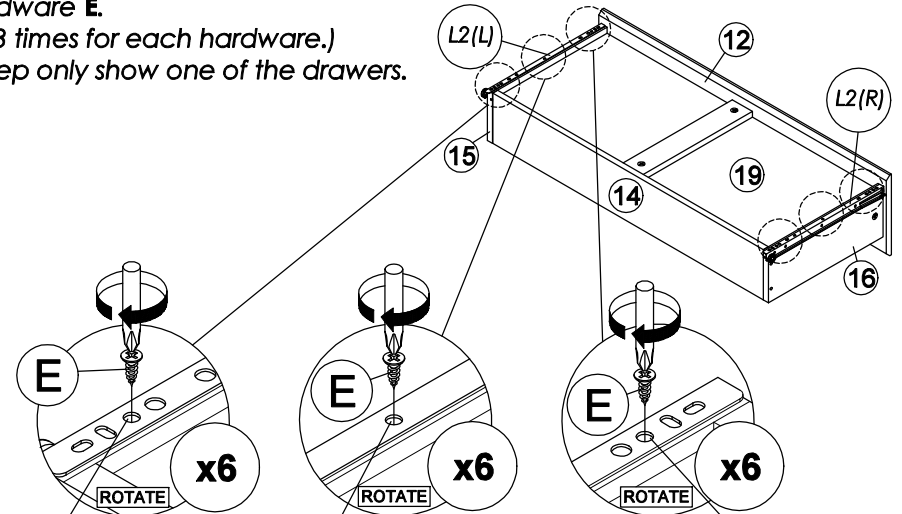


Third hole from the edge. Hole at the center. Third hole from the edge.

*Hardware **L2 (L/R)** shall be leaning against panel **(10)** or **(11)** when assembling.

STEP 20

Assemble hardware **L2 (L/R)** to panel **(15)** and **(16)** by using hardware **E**.
(Repeat 3 times for each hardware.)
* In this step only show one of the drawers.

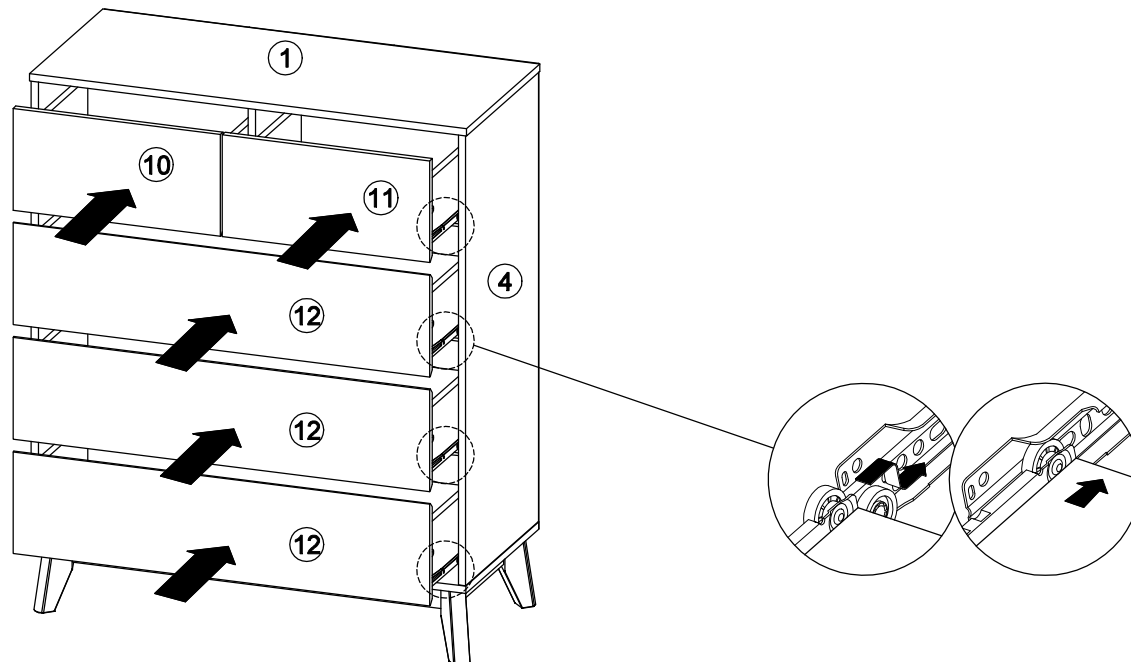


Third hole from the edge. Hole at the center. Third hole from the edge.

*Hardware **L2 (L/R)** shall be leaning against panel **(12)** when assembling.

STEP 21

Put all the drawer in place along the drawer slides.



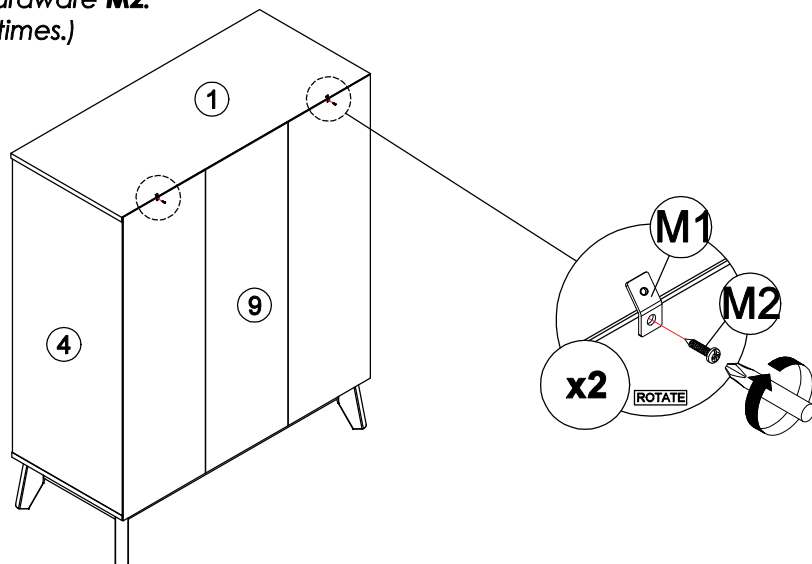
ASSEMBLY INSTRUCTIONS

PAGE: 8/8

MODEL : UH 8736

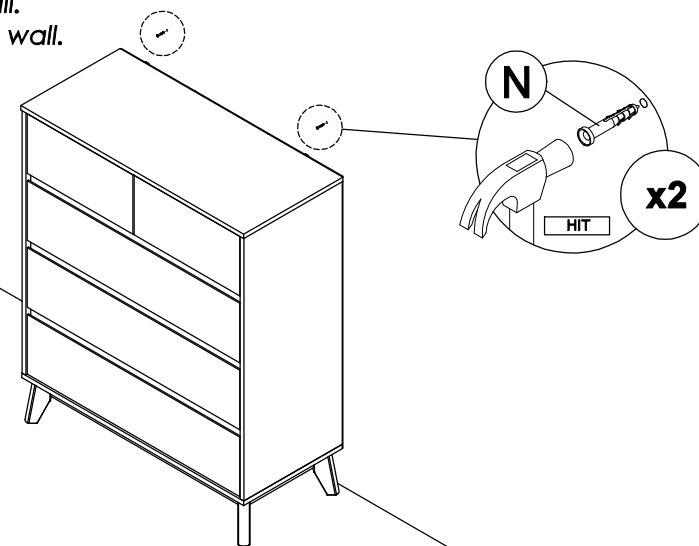
STEP 22

Assemble hardware **M1** into panel **(1)** and **(9)** by using hardware **M2**.
(Repeat 2 times.)



STEP 23

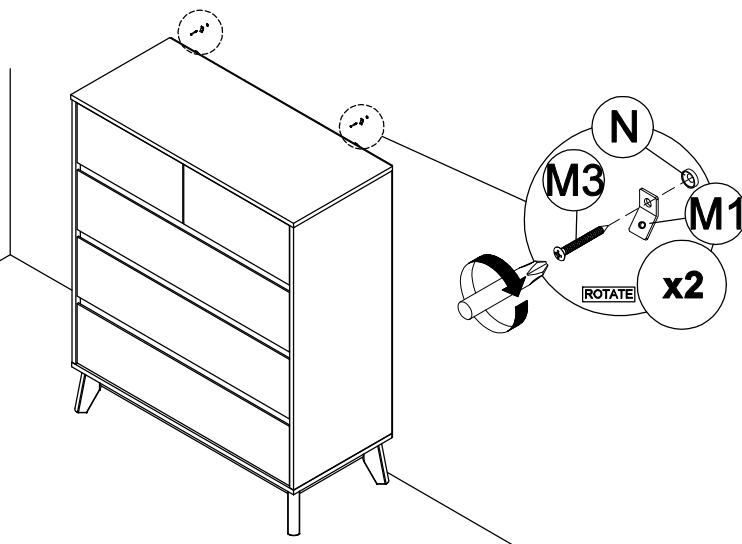
- Mark and use the power drill to drill a hole on the wall.
- Hit hardware **N** into the wall.
(Repeat 2 times.)



* In this step hardware **N** are **NOT** included.

STEP 24

- Assemble hardware **M1** into **N** by using hardware **M3**.
(Repeat 2 times.)



* In this step hardware **N** are **NOT** included.

STEP 25

- Connect both of the hardware **M1** by using hardware **M4**.
- Tighten the hardware **M4**.
(Repeat 2 times.)

