

# HAMPTONS 1 DOOR WARDROBE

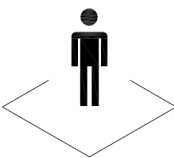
45 MINS

APPROXIMATE ASSEMBLY TIME



1 PERSON  
ASSEMBLY

FLOOR AREA  
3.0M X 1.5M

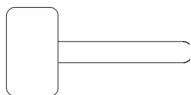


REQUIRED ASSEMBLY SPACE

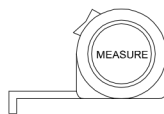
REQUIRED ASSEMBLY TOOLS



POZI SCREWDRIVER



HAMMER

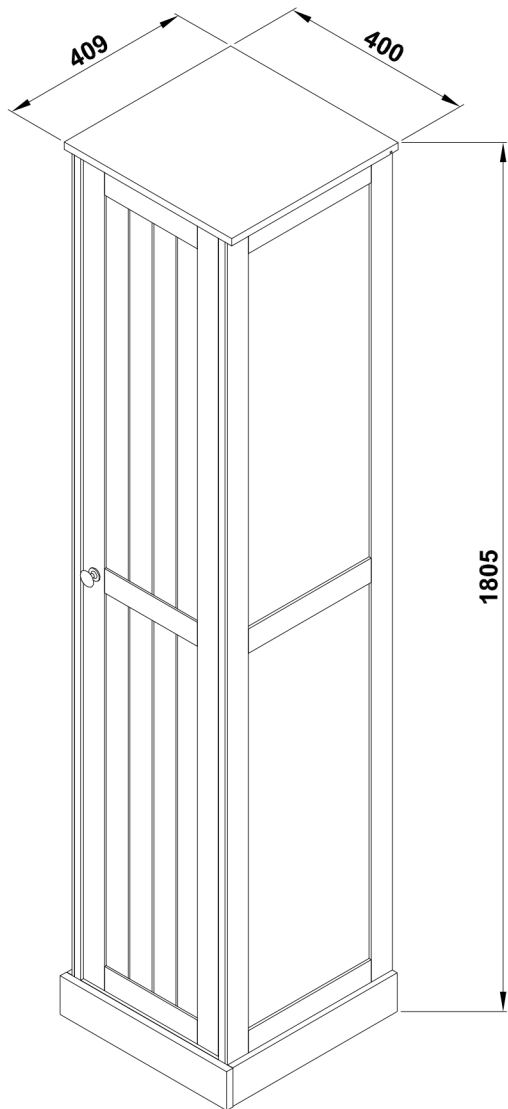


MEASURING TAPE



DRILL

ASSEMBLED DIMENSIONS



# HAMPTONS 1 DOOR WARDROBE

## Tips before you start:

1. Please check that all parts are present before you start the assembly of your furniture.
2. For ease and speed of assembly, we recommend that before you commence each step of the assembly, that you identify all the parts required for that step.
3. For larger items, please ensure that you have sufficient space and people ( as indicated on page 1 ) to assemble your product safely.
4. We recommend that, where possible, all items are assembled near to the area in which they will be placed in use, to avoid moving the product unnecessarily once assembled.
5. For the protection of your furniture, we recommend that the product is placed on a protected surface during assembly to prevent any damage.
6. During assembly please take care not to over-tighten any fittings, as this may damage the product.
7. Always place the product on a flat, steady and stable surface.
8. Do not stand on the product. Do not use the product as a stepladder.
9. This product is intended for indoor, household use only as it is non industrial product.

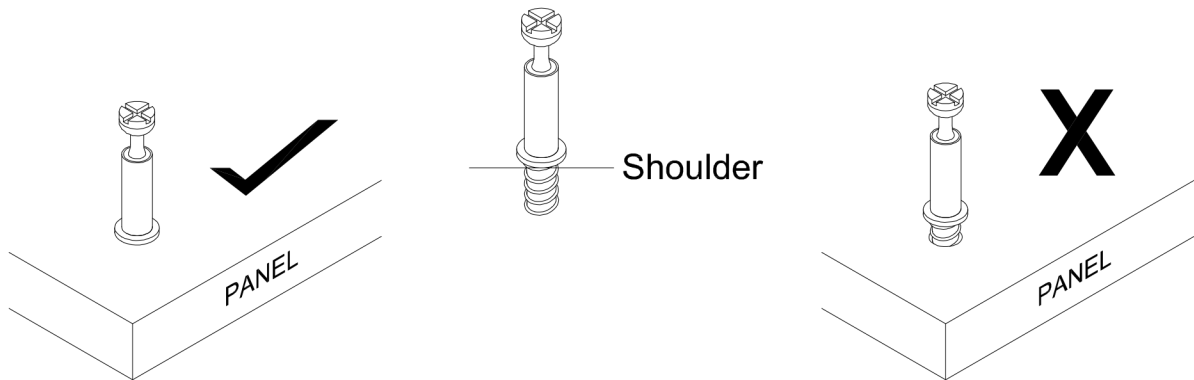
## Care and Maintenance of your Furniture

- ☒ Please periodically check all fittings and re-tighten as necessary.
- ☒ To clean your item, please use a damp cloth and wipe clean.
- ☒ Never allow any kind of liquid to remain on your furniture. Absorption can cause wood to warp or finishes to de-laminate.
- ☒ Please do not place hot item ( e.g. hot drinks ) directly on to the wood surface.
- ☒ Please do not drag or pull your furniture.

# HAMPTONS 1 DOOR WARDROBE

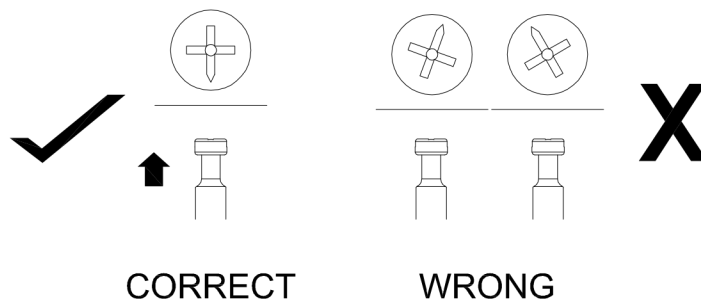
Tips before you start:

## QUICKFIT



Tighten quickfit until shoulder is flush with panel. Do not overtighten or undertighten.

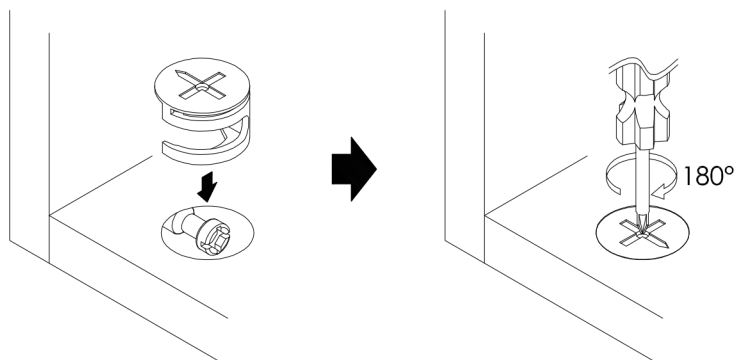
## CAM LOCK



When fitting cam lock, ensure starting position is correct before you insert connecting quickfit.

Quickfit head should be in the centre of the cam lock when the two panels are joined.

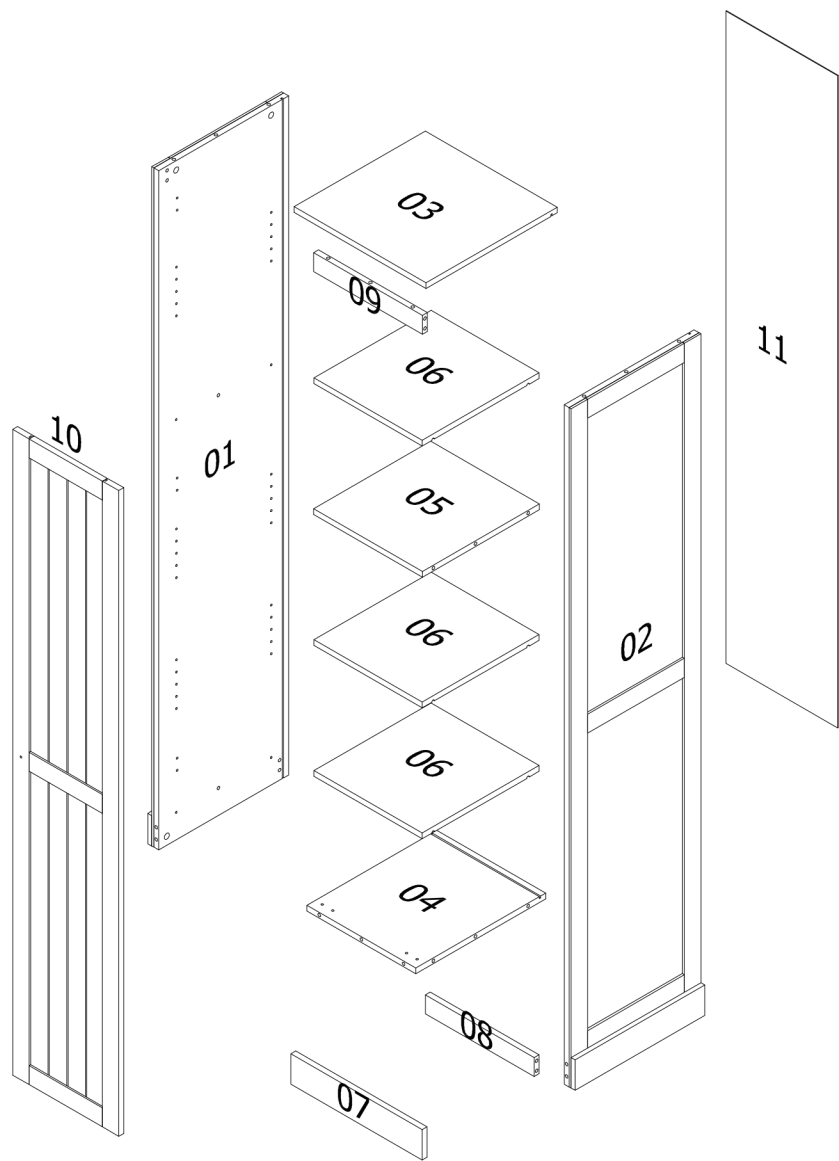
Cam lock should be inserted before quickfit.



Turn camlock clockwise to tighten.

# HAMPTONS 1 DOOR WARDROBE

PART LIST:



| NO. | PART NAME              | QTY |
|-----|------------------------|-----|
| 1   | SIDE PANEL (LEFT)      | 1   |
| 2   | SIDE PANEL (RIGHT)     | 1   |
| 3   | TOP PANEL              | 1   |
| 4   | BOTTOM PANEL           | 1   |
| 5   | DIVIDER PANEL          | 1   |
| 6   | ADJUSTABLE SHELF PANEL | 3   |

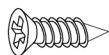
| NO. | PART NAME            | QTY |
|-----|----------------------|-----|
| 7   | FRONT PANEL (BOTTOM) | 1   |
| 8   | BOTTOM SUPPORT RAIL  | 1   |
| 9   | FRONT PANEL (TOP)    | 1   |
| 10  | DOOR PANEL           | 1   |
| 11  | BACK PANEL           | 1   |



# HAMPTONS 1 DOOR WARDROBE

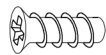
## HARDWARE LIST

A X18



CSK SCREW  
M3.5 X 15MM

B X6



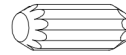
EURO SCREW  
M6 X 13MM

C X1



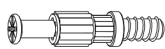
TH CB SCREW  
M4 X 16MM (RB)

D X20



WOOD DOWEL  
Ø8 X 25MM

E X16



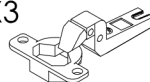
9047975 BOLT DOWEL  
DU319 20X5MM

F X16



9064684 CAM 15/15

G X3



METAL HINGES (7/8")  
W/ SPRING

G2 X3



HINGES PLATE

H X1



PLASTIC DOOR STOPPER

J X1



METAL KNOB 702-25=  
(1PC) WITH SCREW  
(MC4 X 22MM)=(1PC)

K X4



PLASTIC LEG STUD

L X12



METAL ADJUSTABLE  
SHELF STUD

M X12



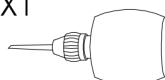
BACKPLY STOPPER

N X1



PP STRAP 12 X 150 X 1.2MM  
BLK 2 HOLE WITH EYELET

P X1

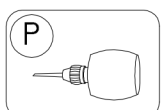
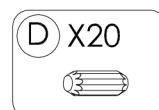
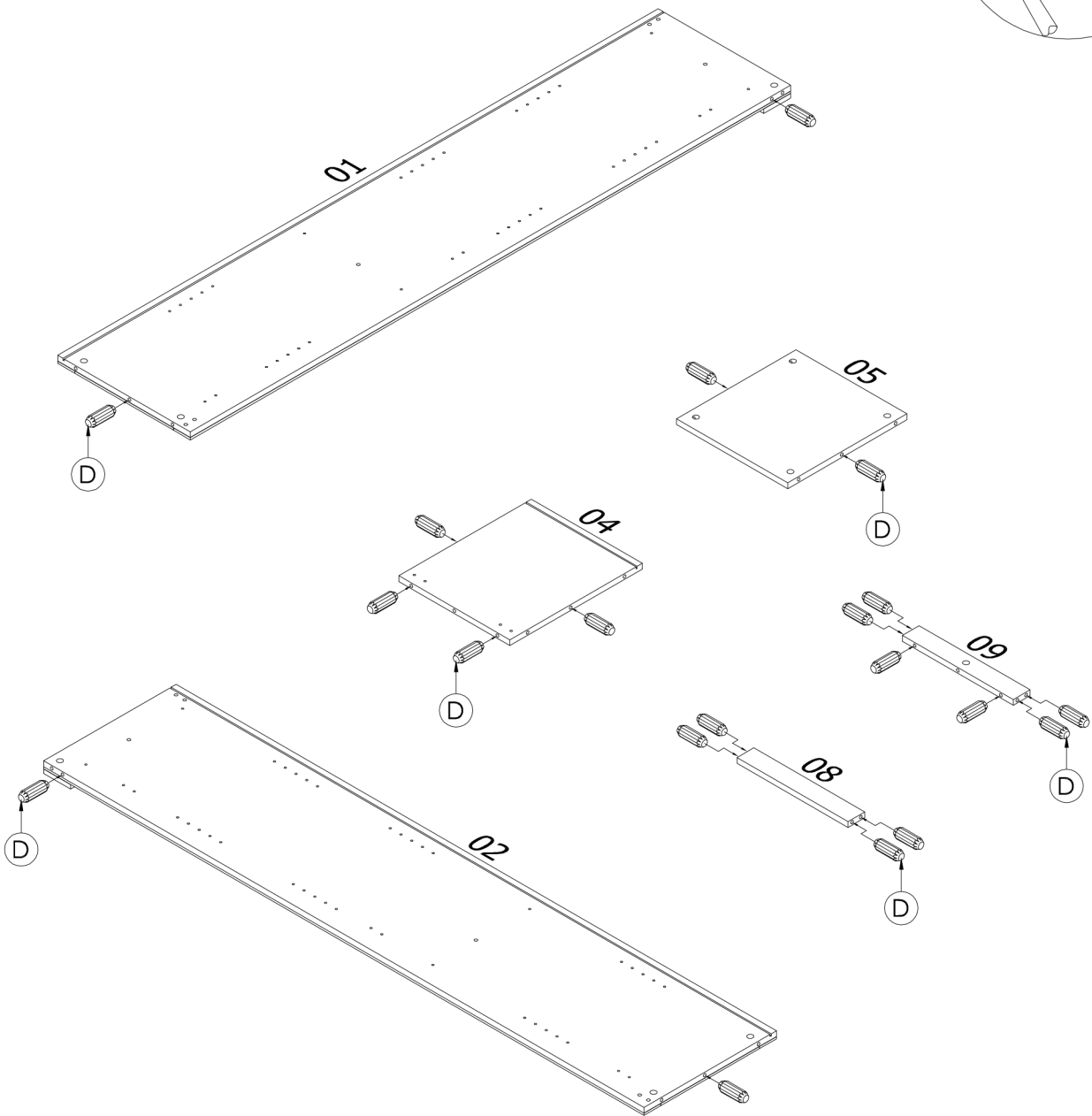
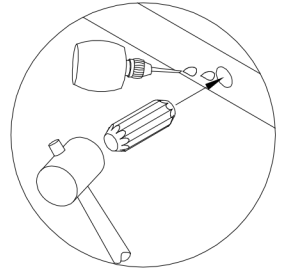


GLUE

# HAMPTONS 1 DOOR WARDROBE

## STEP 1

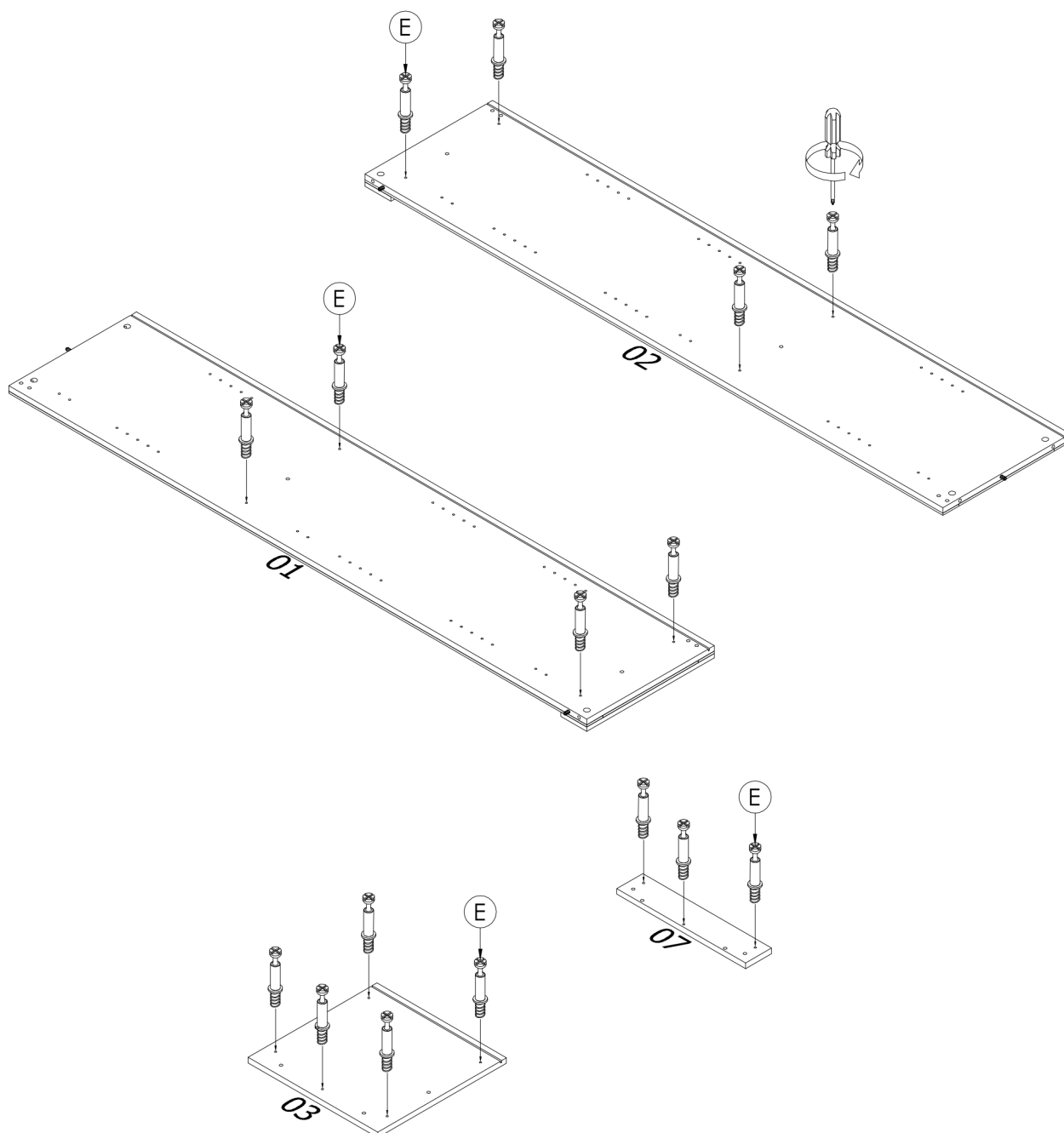
Using glue (P) insert dowel (D) into pieces (1 , 2 , 4 , 5 , 8 & 9) as shown.



# HAMPTONS 1 DOOR WARDROBE

## STEP 2

Take all panels (1, 2, 3 & 7), using a drill on low speed / torque or a phillips head screw driver cam pins (E) as shown.



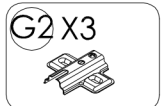
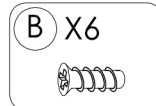
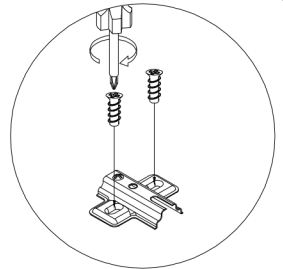
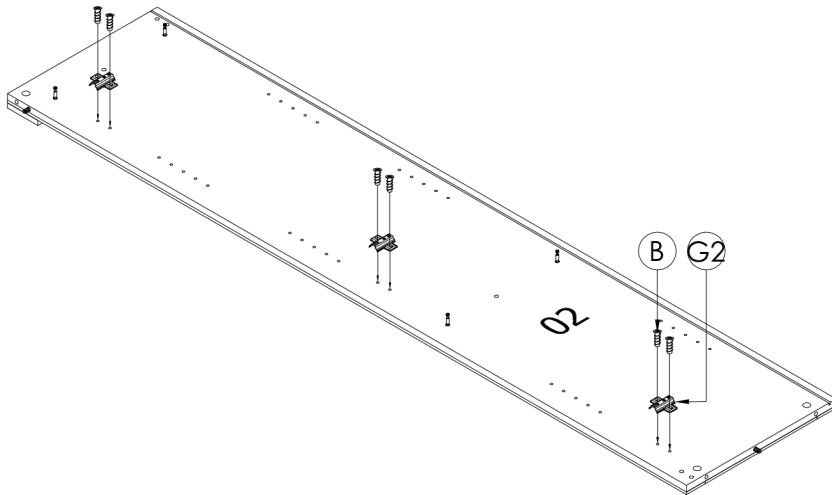
E X16



# HAMPTONS 1 DOOR WARDROBE

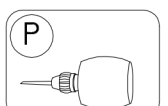
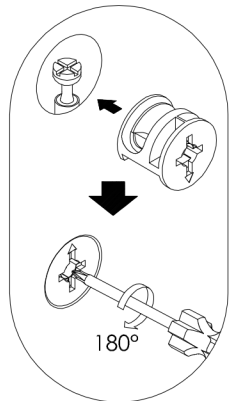
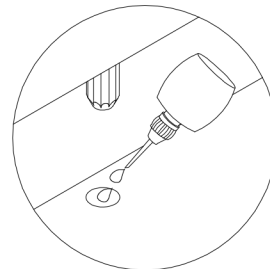
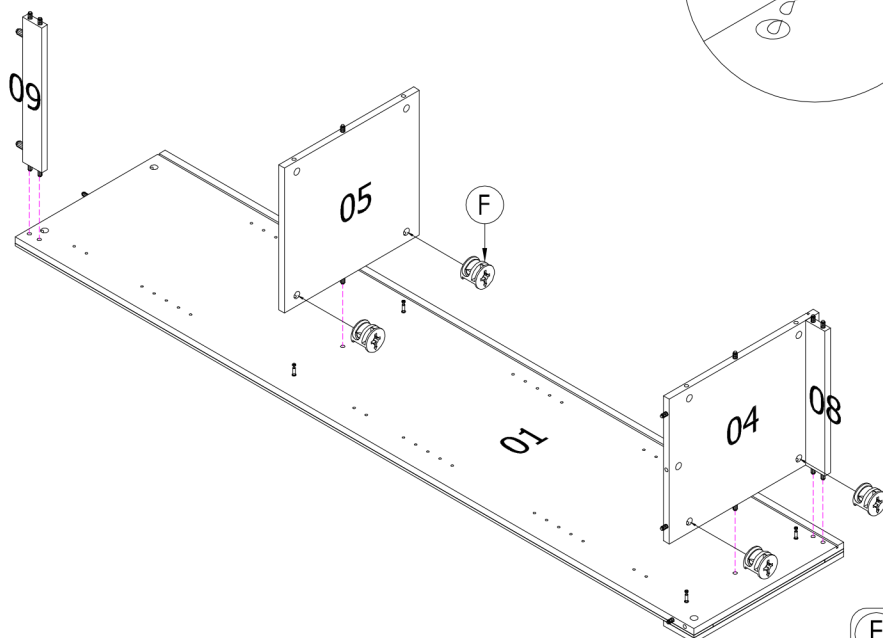
## STEP 3

Affix the hinges plate (G2) with screw (B) to the side panel (2).



## STEP 4

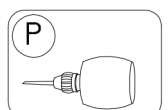
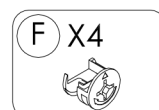
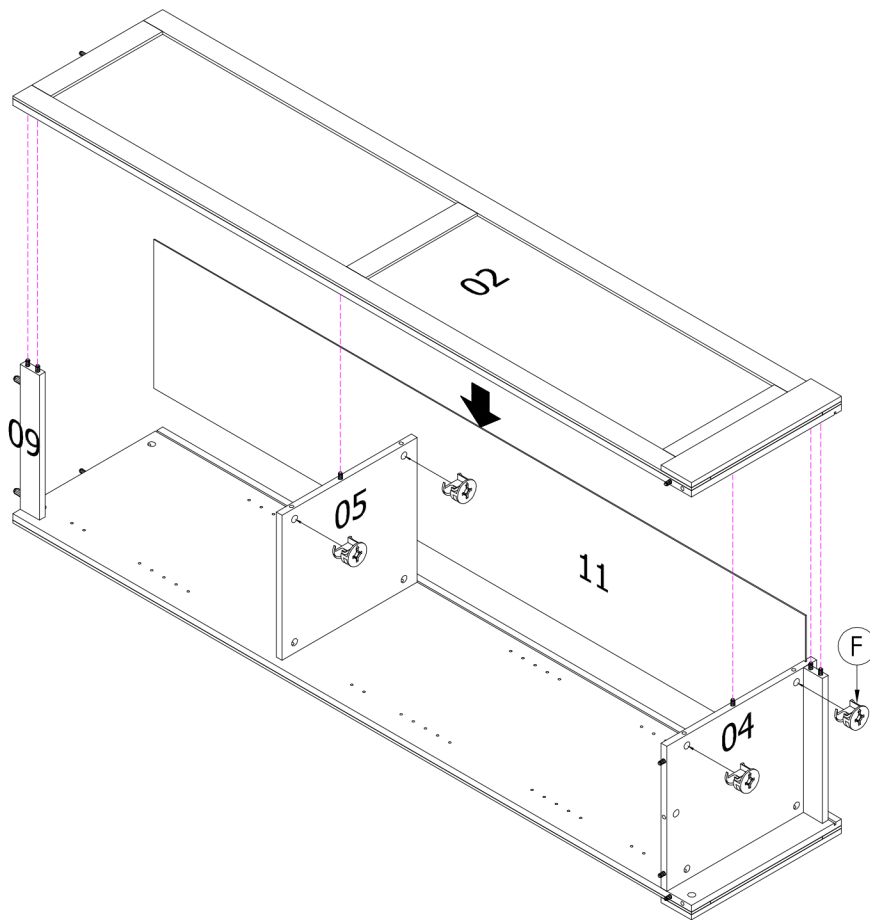
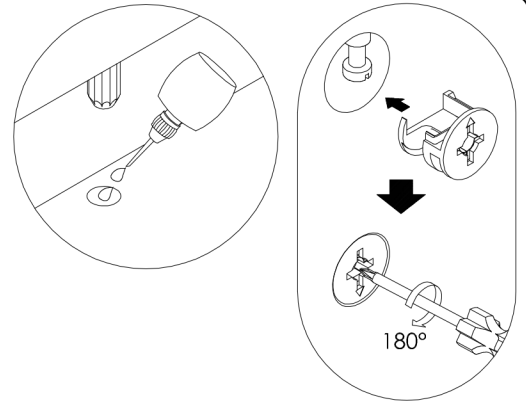
Attach panels (4, 5, 8 & 9) to panel (1) using glue (P) with cam lock (F) as shown.



# HAMPTONS 1 DOOR WARDROBE

## STEP 5

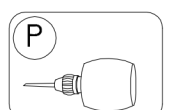
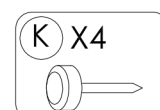
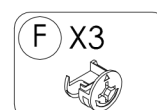
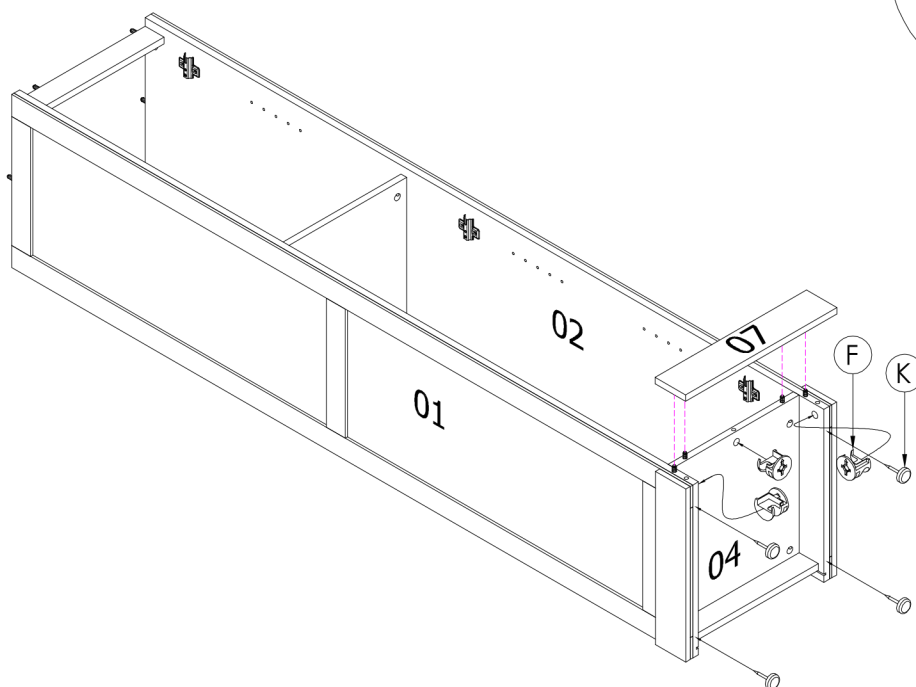
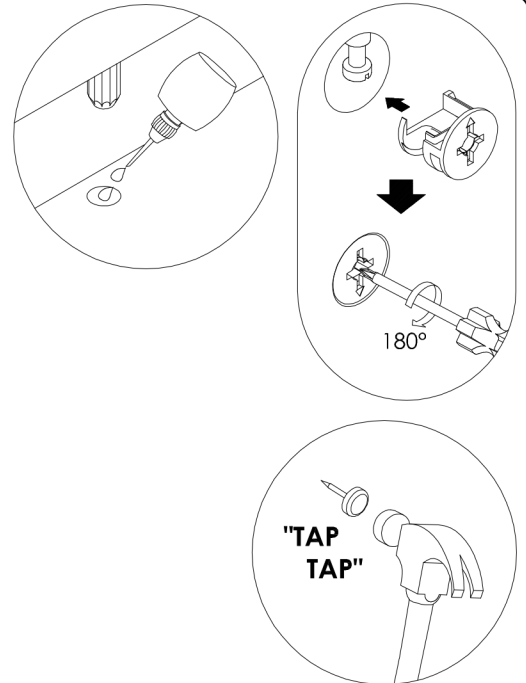
Slot back panel (11) to frame. Attach panel (2) to panel (4, 5, 8 & 9) using glue (P). Fasten into place using cam lock (F) as shown.



# HAMPTONS 1 DOOR WARDROBE

## STEP 6

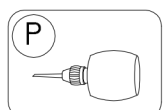
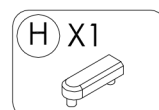
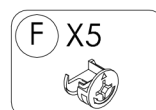
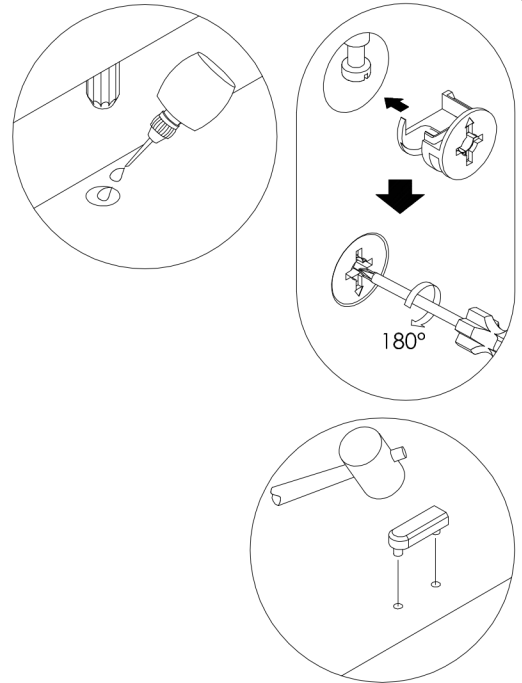
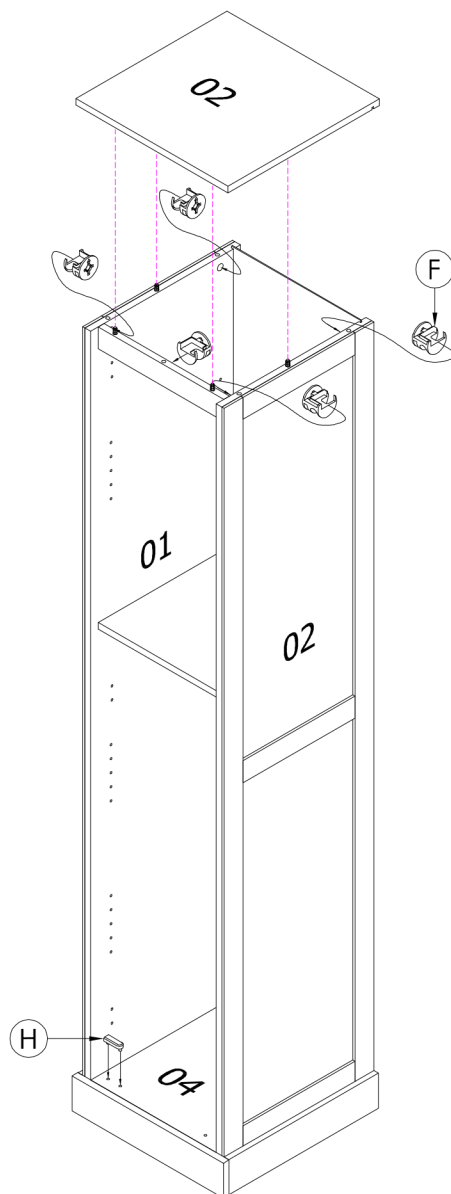
Attach panels (7) to panel (1, 2 & 4) using glue (P) with cam lock (F) as shown. Then fix plastic leg stud (K) to panel (1 & 2).



# HAMPTONS 1 DOOR WARDROBE

## STEP 7

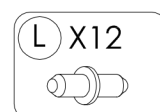
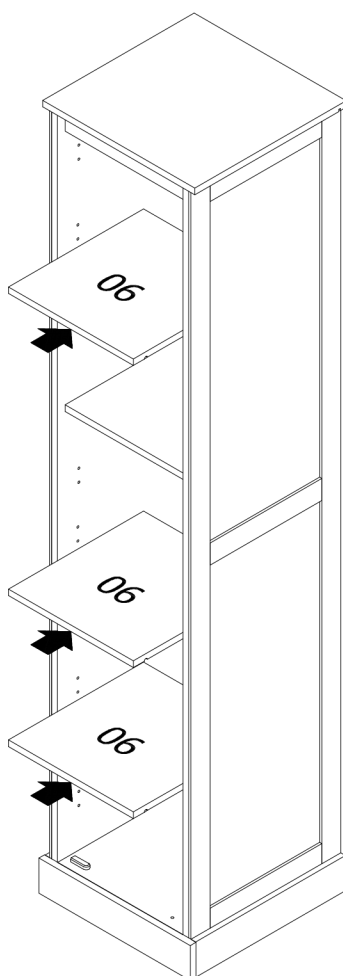
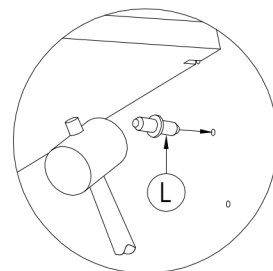
Using glue (P) attach top panel (3) to frame.  
Fasten into place using cam lock (F) as shown.  
Fix plastic door stopper (H) to panel (4).



# HAMPTONS 1 DOOR WARDROBE

## STEP 8

Insert the metal adjustable shelf stud (L) to panel (1 & 2) then insert the shelf panel (6) into the body as shown.

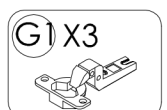
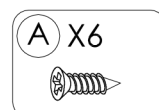
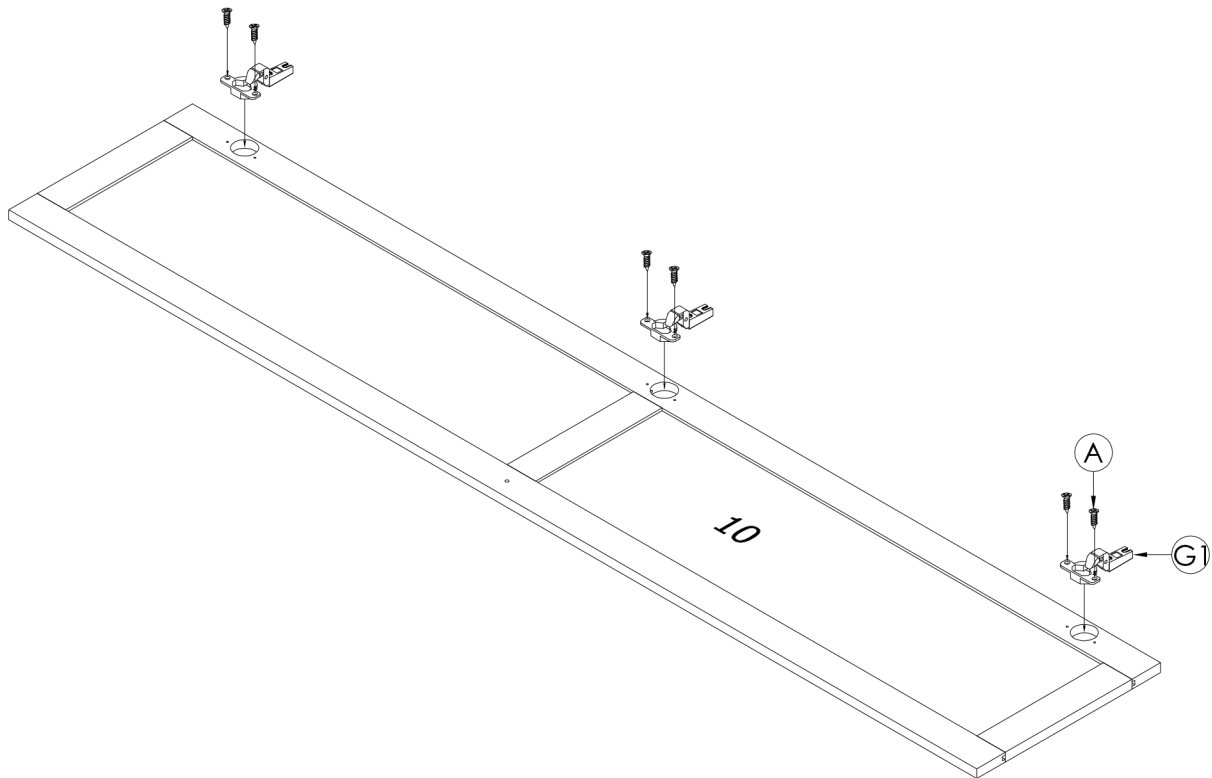
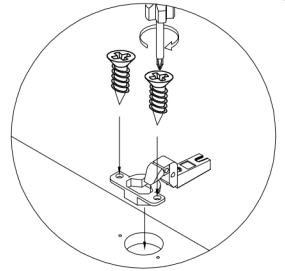




# HAMPTONS 1 DOOR WARDROBE

## STEP 9

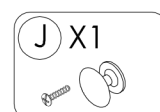
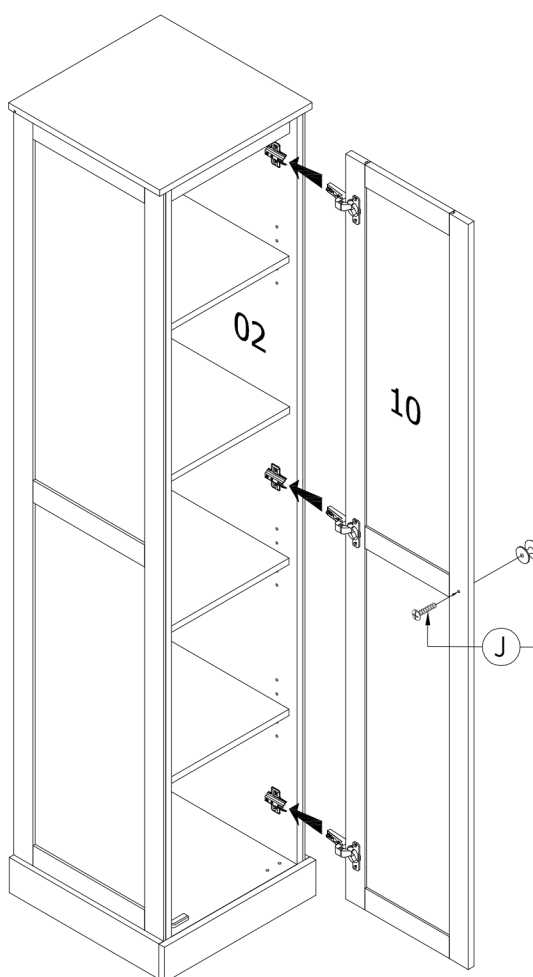
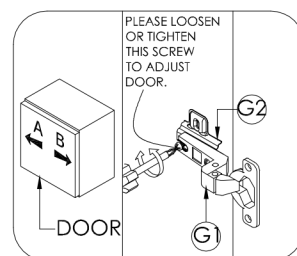
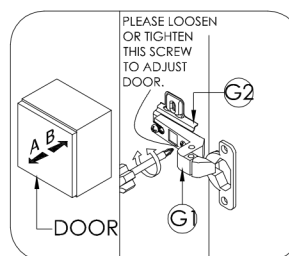
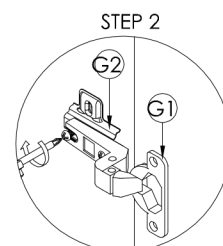
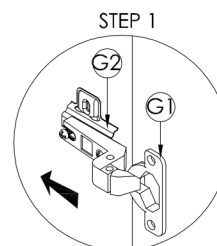
Affix the hinges (G1) with screw (A) and to the door panel (10) as shown.



# HAMPTONS 1 DOOR WARDROBE

## STEP 10

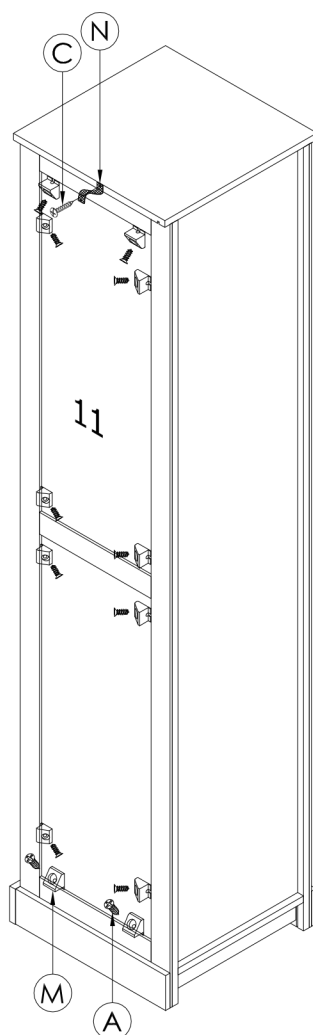
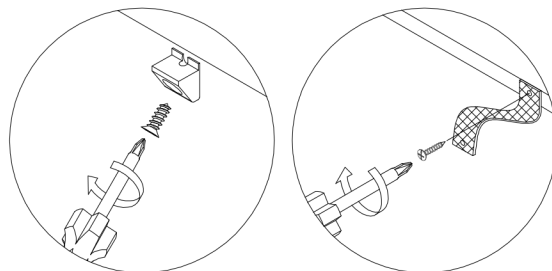
Attach the handle (J) to door panel (10) as shown.  
Then attach the door (10) to the side panel (2).



# HAMPTONS 1 DOOR WARDROBE

## STEP 11

Attach the backply stoppers (M) to the back panel (11) using 15mm screw (A). Attach pp strap (N) to top panels (3) with 16mm screw (C) as shown.



A X12



C X1



M X12

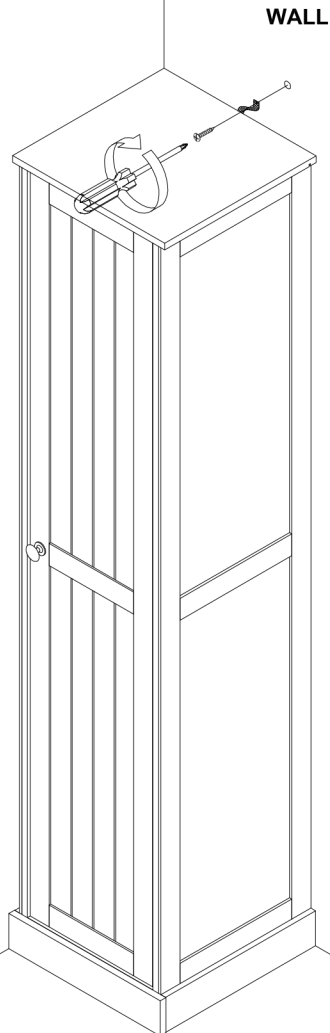


N X1



# HAMPTONS 1 DOOR WARDROBE

**ASSEMBLY IS COMPLETE**



NOTE :  
WALL PLUG & SCREW ARE NOT SUPPLIED WITH THIS PRODUCT AS DIFFERENT  
WALL MATERIALS REQUIRE DIFFERENT TYPES OF FIXING HARDWARE & YOU  
MUST USE SUITABLE FIXING HARDWARE FOR TYPE OF WALL YOU INTEND TO  
MOUNT THIS PRODUCT TO WALL.