**Back View !!**

Step 1 : Unzip the black non-woven fabric on the back of headboard and take side wing (N) out.

Step 2 : Tighten the side wing (N) to headboard (A) as shown. Tighten the legs (D) by using self tapping screws to footboard (B) as shown. Predrilled holes not required.

Step 3 : Attach side rail (C) to headboard (A) and footboard (B) by pushing the bracket down.

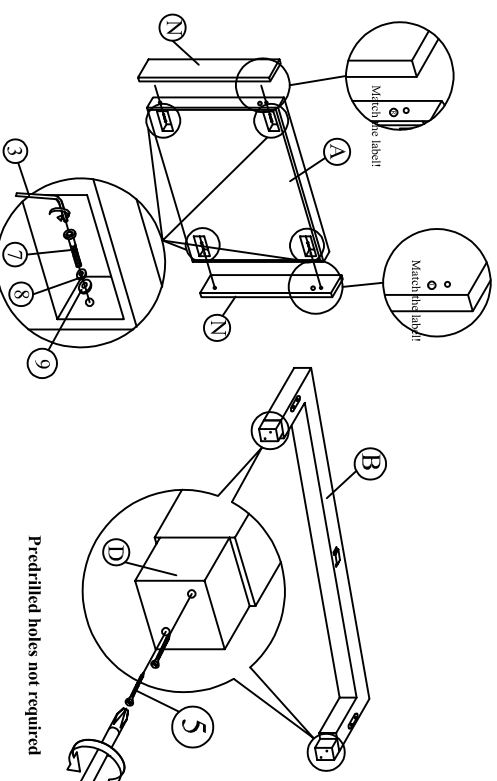
A		1 pc	I		1 pc
B		1 pc	J		2 pcs
C		2 pcs	K		1 pc
D		2 pcs	L		3 pcs
E		1 pc	M		2 pcs
F		2 pcs	N		2 pcs
G		1 pc			
H		1 pc			

hardware for bed (1)**hardware for panel (2)**

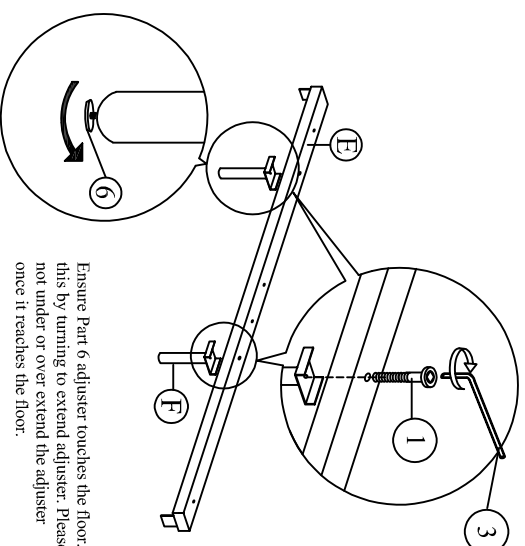
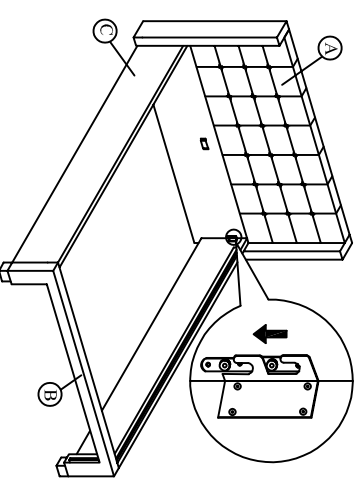
1		5 pcs	10		24 pcs
2		1 pc	11		16 pcs
3		1 pc	12		8 pcs
4		28 pcs	13		6 pcs
5		4 pcs	14		24 pcs
6		2 pcs	15		2 pcs
7		4 pcs			
8		4 pcs			
9		4 pcs			

Step 4 : Attach the support legs (F) to the center rail (E) of the bed as shown.

Step 5 : Slide the center rail (E) to the headboard (A) and footboard (B).



Predrilled holes not required



Ensure Part 6 adjuster touches the floor. Do this by turning to extend adjuster. Please do not under or over extend the adjuster once it reaches the floor.

The diagram shows a cross-section of a roof truss. A circular detail view is shown, connected by a dashed line to a specific joint in the truss. The detail view shows the internal structure of the joint, including the roof deck, insulation, and structural members. A small circle with a cross inside is located on the left side of the truss section.

If it is optional to choose attach the drawer stopper.

- A) Please lift up the foot end gently to strengthen the bed .
- B) Tighten screws on one side of side rail only.
- C) Side rail is flexible please push on the center parts of the side rail gently then tighten the screw on side rail immediately . If necessary you may need to push the centre of side rail and pull the slat gently toward you all at the same time which will close the gap .
- D) Tighten all the screws, including screws on the centre rail.
- E) Recheck and ensure Part 6 adjuster touches the floor. Do this by turning to extend adjuster. Please do not under or over extend the adjuster once it reaches the floor.
- F) DO NOT drag the bed, please lift the bed up first then moving to avoid center support leg and bed feet crack and break!!