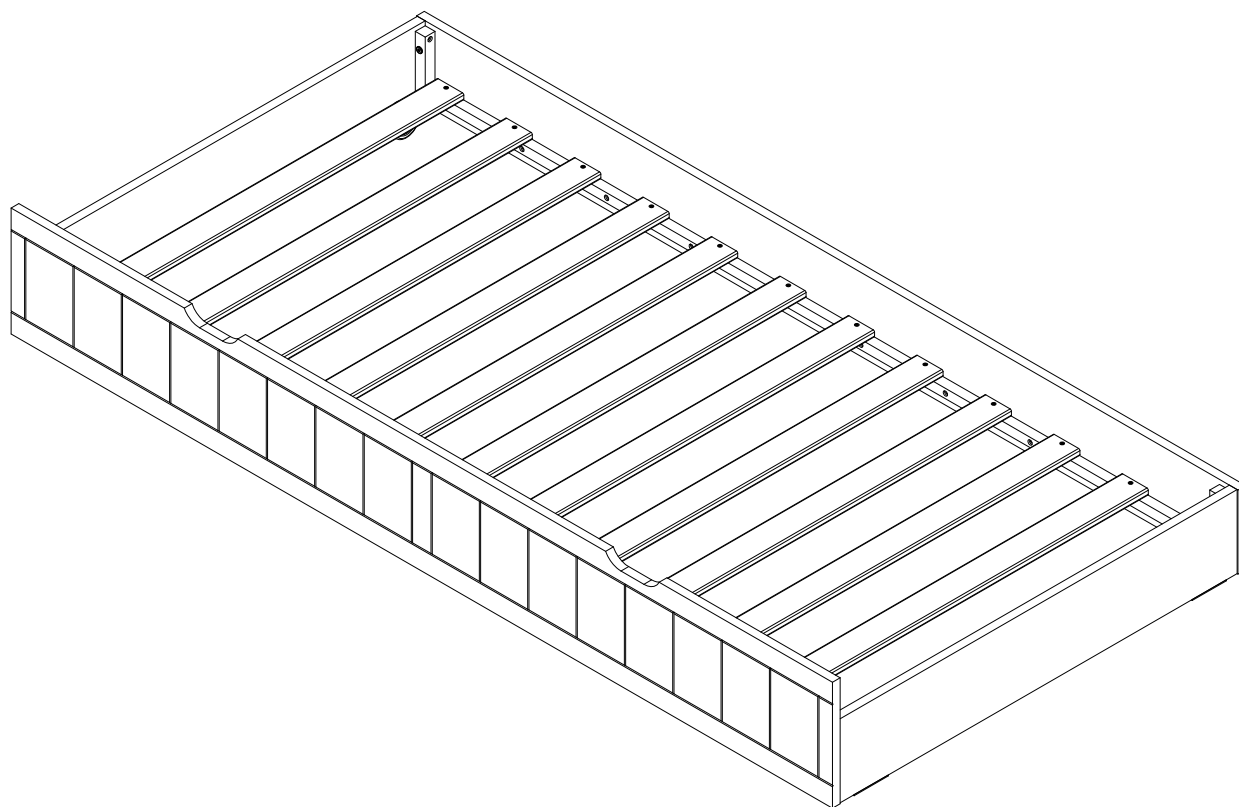


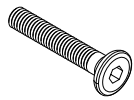
ASSEMBLY INSTRUCTION

MODEL : WS1602BW TRUNDLE BED (930 x 1880)MM



HARDWARE LIST

A



JCBC BOLT (M6 x 35MM)

8 PCS

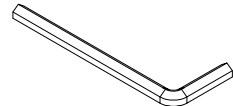
B



CSK C/B SCREW (M4 x 32MM)

24 PCS

C



ALLEN KEY (M4 x 60MM)

1 PC

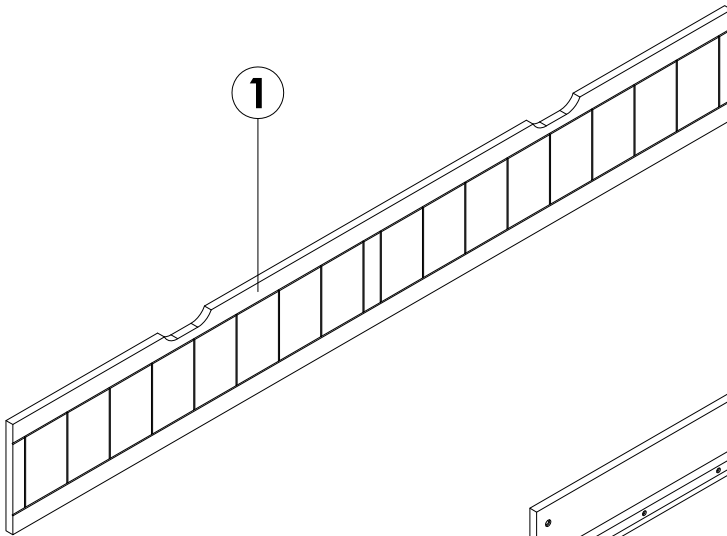


Do not recommend the use of power drills/drivers for inserting bolts/screws as this could damage the unit.

Tools Required :
Crosshead Screw Driver

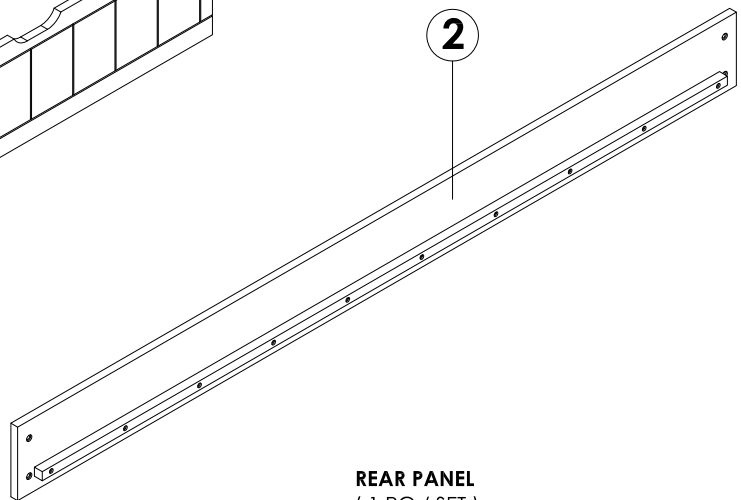
PART LIST

1



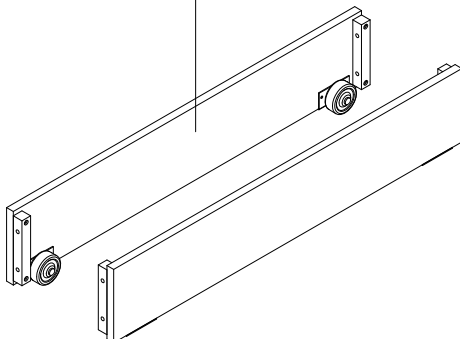
FRONT PANEL
(1 PC / SET)
CARTON 1 OF 1

2



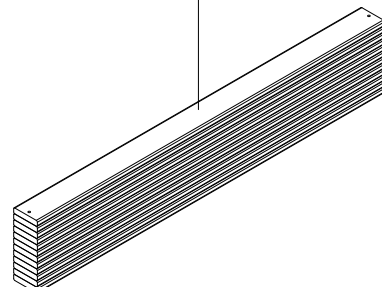
REAR PANEL
(1 PC / SET)
CARTON 1 OF 1

3

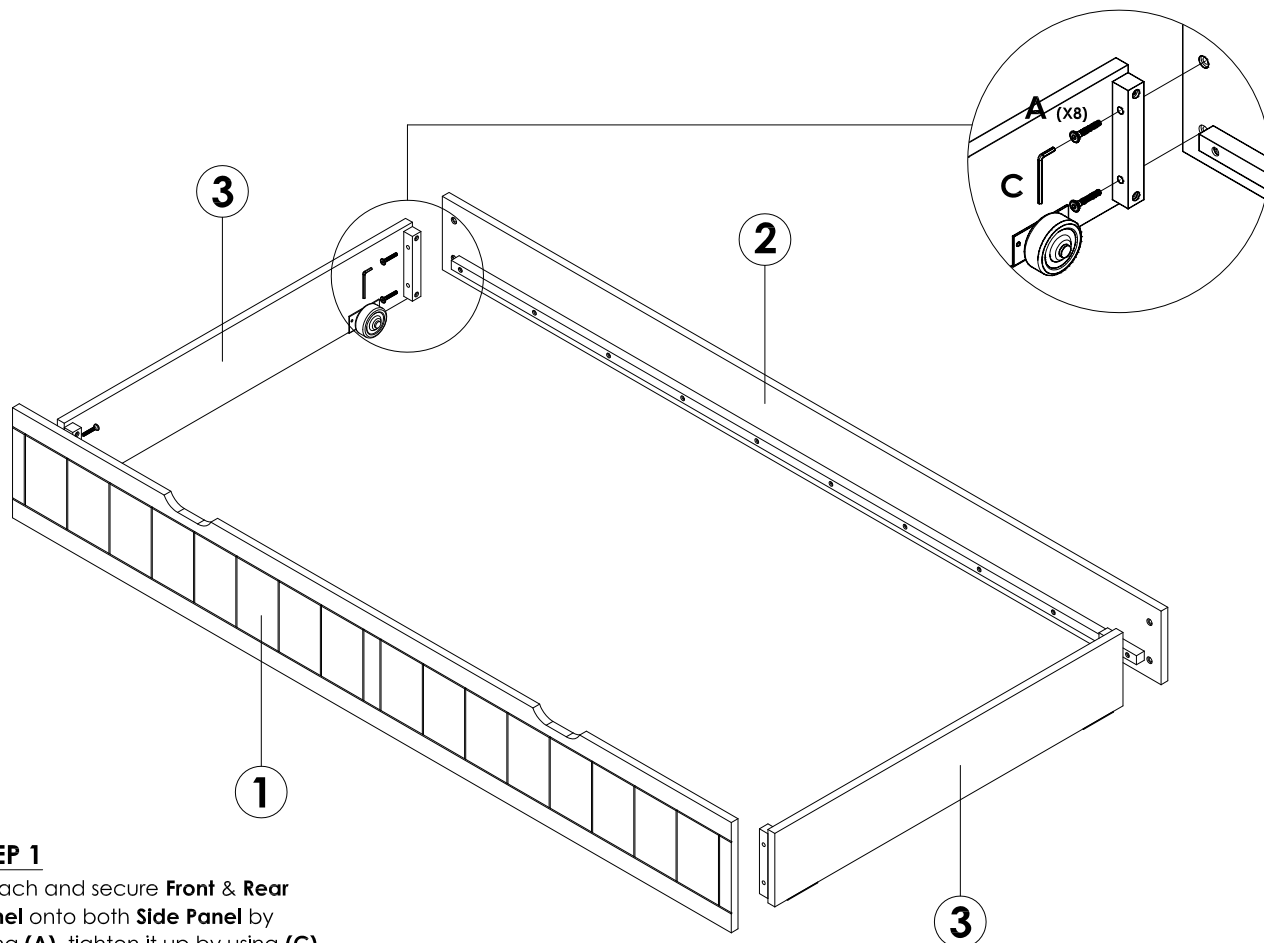


SIDE PANEL
(2 PCS / SET)
CARTON 1 OF 1

4

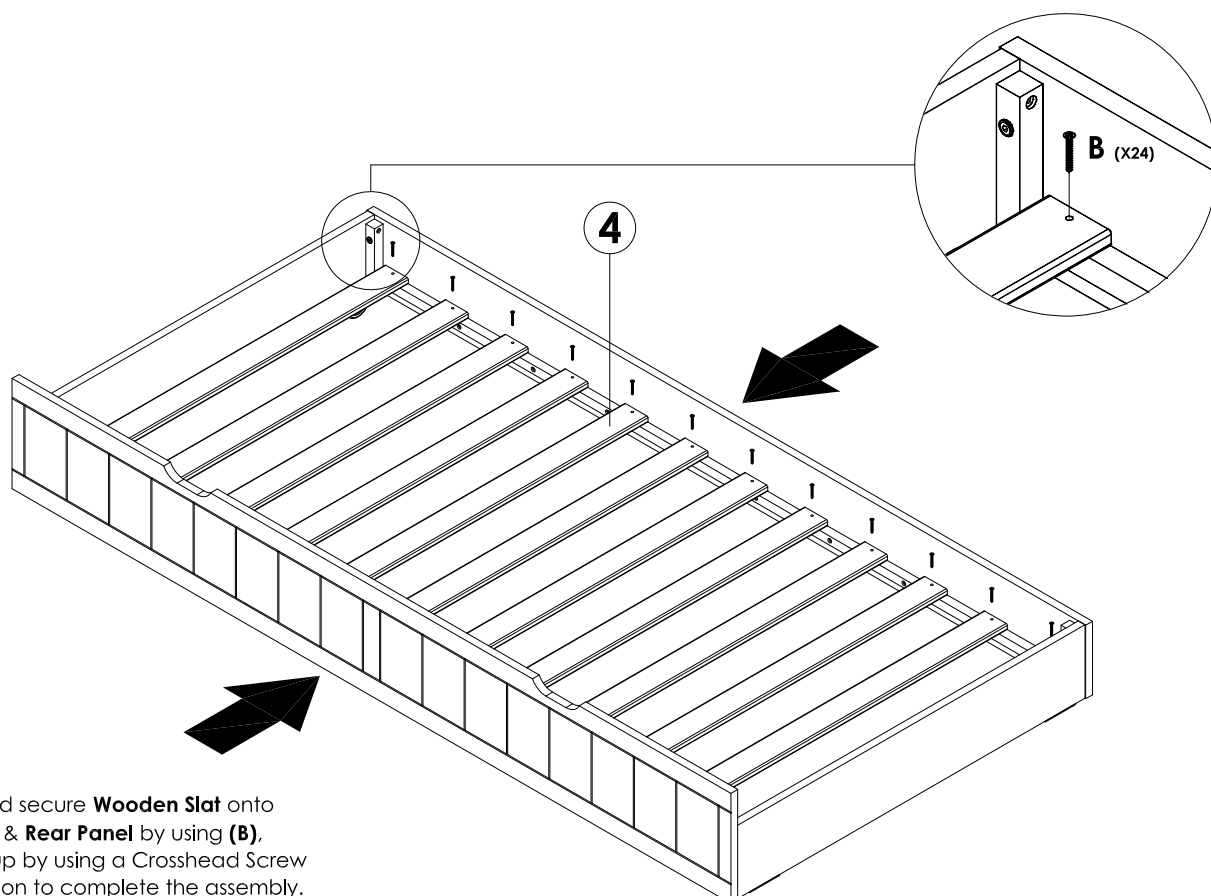


WOODEN SLAT
(12 PCS / SET)
CARTON 1 OF 1



STEP 1

Attach and secure **Front & Rear Panel** onto both **Side Panel** by using **(A)**, tighten it up by using **(C)**.



STEP 2

Attach and secure **Wooden Slat** onto both **Front & Rear Panel** by using **(B)**, tighten it up by using a Crosshead Screw Driver. Go on to complete the assembly.

Align **Front & Rear Panel** before tightening the screws.