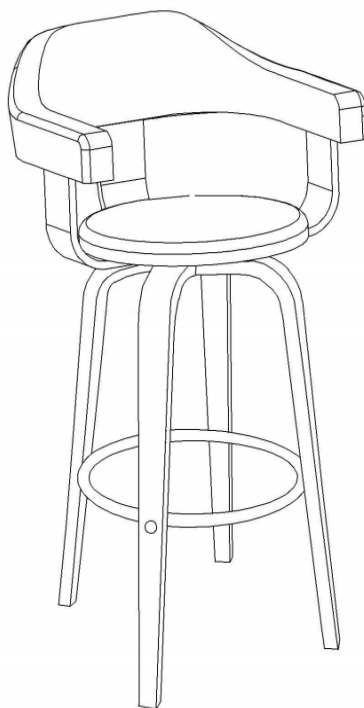


Millan Barstool



CARE GUIDE.

Congratulations on your new furniture! This care guide is designed to enable you to make the most of your new furniture. The guide contains tips and advice on how to care for and maintain your furniture, so that it stays good-looking for as long as possible.

All furniture has its own charm and special characteristics but there are some common denominators. Whatever your choice of furniture, you should consider the following:

Assembly

When assembling furniture, it is very important to do so on a clean, soft surface in order to avoid damage. Take care of corners and edges as these can be damaged by impacts during assembly. Surfaces are sensitive to scratches and impact, so be careful.

Handling and maintenance

Never place furniture on damp surfaces. Felt pads should be fitted when placing furniture on synthetic or lacquered floors in order to avoid scratches. The furniture is for indoor use unless it is specifically designed for outdoor use. Screws and fittings should be regularly checked to ensure that they are sufficiently tightened. Never place coloured lights or any form of tape on furniture. Always protect furniture from hot objects, strong solvents and damp. Heavily coloured liquids e.g. coffee and wine, should be wiped off immediately. Rivets in jeans and belts can cause scratches and cuts.

Care advice

Faux Leather/PU

PU/synthetic leather needs to be treated two to three times a year; or as necessary. Always use a furniture care product intended for faux leather. The most common cause of cracked polyurethane surfaces is harmful fat deposits from human skin, hair or fried food. The cleaning agent used must therefore be capable of deep cleaning to remove these fats.

Clean with a soft cotton cloth containing a suitable cleaning agent intended for cleaning By-Cast and PU.

Always wipe off with a clean, dry and soft cotton cloth to restore the material's high-gloss finish. In the event of heavy staining, contact the shop where you purchased the furniture.

Bear in mind

Do not use products intended for real leather. Simply using water and soap is insufficient for cleaning faux leather/PU; use only cleaning agents specifically designed for the material.

Information regarding the use of cleaning agents for faux leather/PU can be found on the packaging. It is important to use the product recommended in-store.

Care advice

Fabric(including velvet)

Protect from direct sunlight, direct heat and weather. Covers will fade over time. Do not remove covers for cleaning. Vacuum regularly using low suction. Blot food and liquid spills immediately with a dry, white, clean cloth. Do not rub.

If further cleaning is required, use a mild non-coloured pure soap solution made from soap flakes mixed with warm water.

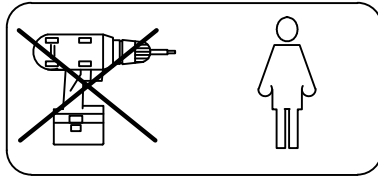
Professional cleaning recommended for persistent stains.

Dry in shade always from direct heat and sunlight.

Allow to dry thoroughly before use.

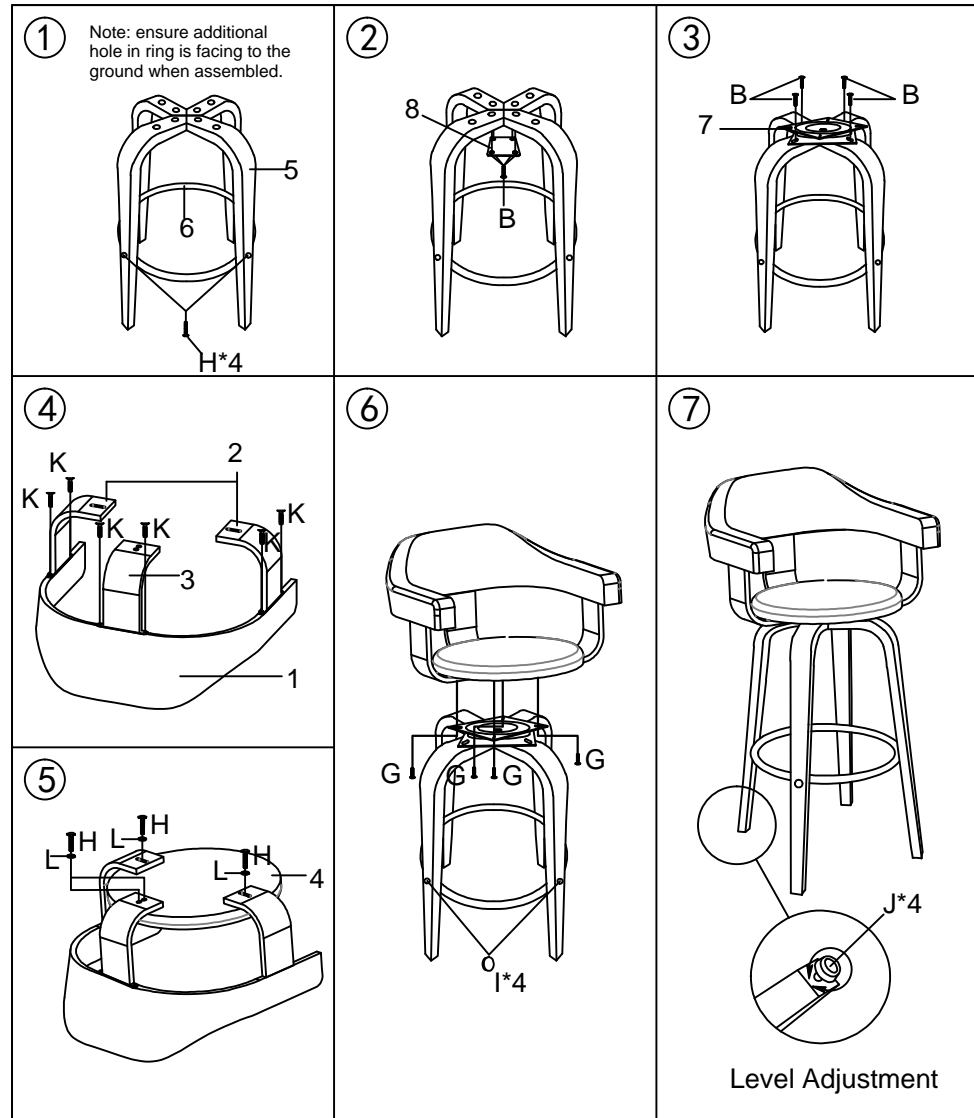
Welcome to the M.F family.

@M.F



Assembly Instruction MILLAN

Part 1*1		K*6+1 Extra	
		 M4x16MM	
Part 2*2		G*4+1 Extra	
		 M6x16MM	
Part 3*1		B*8+1 Extra	
		 M6x25MM	
Part 4*1		H*8+1 Extra	
		 M6*30MM	
Part 5*4		N*1	
Part 6*1		L*4	
Part 7*1	Part 8*1	I*4	J*4



M.F