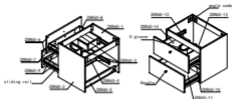


Name	Panel No.	QTY
Panel	2DR60-1	1
Panel	2DR60-2	1
Panel	2DR60-3	4
Panel	2DR60-4	1
Panel	2DR60-5	1
Panel	2DR60-6	2
Panel	2DR60-7	2
Panel	2DR60-8	2
Panel	2DR60-9	2
Panel	2DR60-10	1
Panel	2DR60-11	1
Panel	2DR60-12	1
Panel	2DR60-13	1
Panel	2DR60-14	1

Name	Spare Parts	QTY
angle code		2
handle		2
U groove		1
M screw		2
connecting rod		60
centrifugal wheel		60
214x13 screw		56
214x18 screw		10
2160 wire expansion tube		2
sliding rail		4

Installation



1. Screw connecting rails on the all panels



2. Connecting 20860-2, 20860-3, 20860-4 panels with 20860-1 panel by connecting rails



3. Connecting 20860-2 panel with 20860-2, 20860-3, 20860-4 panels by connecting rails



4. Screw all center flange steels (near connecting rails) substantially



5. Install 1 angle codes on 20860-3 panel hole to hole fixing by 4x6x12 screws



6. Slide out the rail and press the back on the side of the rail and pull out the inner rail



7. Align 4 tracks and cabinet position and fix by 25x12 screws hole to hole and get finished cabinet as photo



7. Connecting 20860-7, 20860-10 panels with 20860-11 panel by connecting rails



8. Connecting 20860-6, 20860-9 panels with 20860-7, 20860-10, 20860-11 panels by connecting rails



9. 4. Screw all centrifugal sheets (near connecting rails) clockwise



10. Install drawer on 20860-6 hole to hole by fixing 25x18 screws and expansion tube



11. Install 2 inner rails on 20860-8, 20860-9 panels hole to hole by fixing 25x12 screws to get finished drawer as photo



12. Connecting 20860-7, 20860-12, 20860-13 panels with 20860-14 by connecting rails



13. Connect 20860-6, 20860-9 panel with 20860-7, 20860-12, 20860-13, 20860-14 by connecting rails



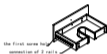
14. Screw all centrifugal sheets (near connecting rail) clockwise



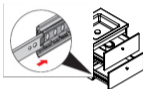
15. Install drawer on 22620-6 panel hole to hole by fixing 224x18 screws as photo



16. Install U groove on the panel hole to hole by fixing 224x12 screws as photo



17. Install 2 inner rails on the 22620-6, 22620-9 panels by fixing 2pcs 224x12 screws and get drawer as photo



18. Tracks on the drawers are pushed directly into the rail on the cabinet to complete the installation as photo



19. Install handles by fixing 80 screws as photo