







An underfloor heating thermostat that can control your electric underfloor heating system and an extra appliance


Thermotouch 4.3dC has been redesigned with bathrooms in mind and can be installed in a portrait or landscape orientation, with 8 screen colour settings to choose from

- 

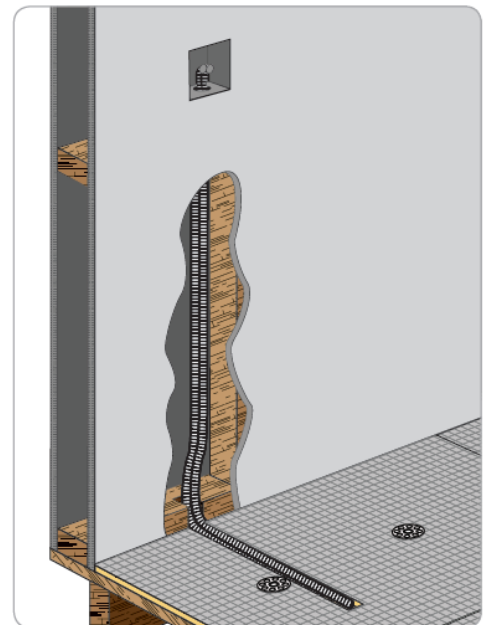
Control your underfloor heating and appliance (towel rail or mirror demister) from the same thermostat
- 

Built in ambient temperature sensor and external floor sensor for accurate temperature management
- 

Customise your thermostat with a choice of portrait or landscape mode and 8 different colour screen settings
- 

Design an economical heating schedule for your underfloor heating and copy to your towel rail or mirror demister
- 

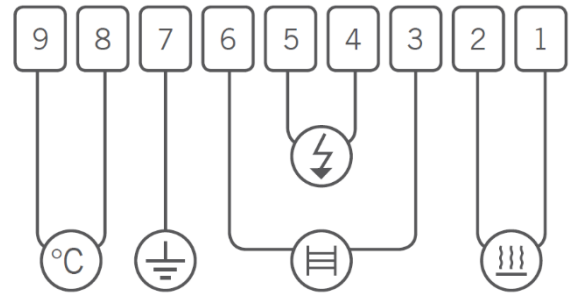
Manually boost your underfloor heating and towel rail until the next heating event or for 1, 2 or 4 hours



Floor temperature sensor should be installed in a conduit, within a clear area of the floor, and away from any other temperature influences.

Wiring diagram

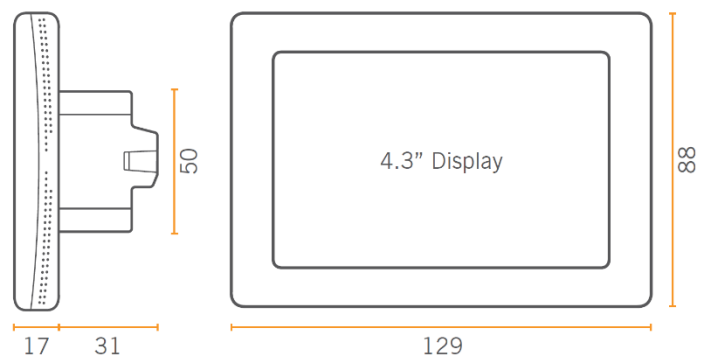
1. Live – Underfloor heating
2. Neutral – Underfloor heating
3. Neutral – Secondary relay (for towel rail or demister)
4. Neutral – 240V supply
5. Live – 240V supply
6. Live – Secondary relay (for towel rail or demister)
7. Earth - Common
8. Floor sensor (not polarity sensitive)
9. Floor sensor (not polarity sensitive)



Box contents

- 1 x Thermotouch 4.3dC
- 1 x Installation guide
- 1 x 3m floor temperature sensor probe
- 1 x 2m sensor conduit
- 2 x Fixing screws

Dimensions (mm)



Technical data

Supply voltage	240V 50/60Hz
Maximum load	16A (20A combined)
UFH relay	16A (3600W)
Appliance relay	5A (1125W)
Temperature range	5 ~ 35°C
Ambient	0 ~ 50°C
Compatible sensors	6.8kΩ, 10kΩ, 12kΩ, 15kΩ, 33kΩ (@ 25°C)
Accuracy	± 0.5°C
Warranty	3 year
IP rating	IP30
Width	129mm
Height	88mm
Depth	48mm (31mm in wall)