

**ARTIST**

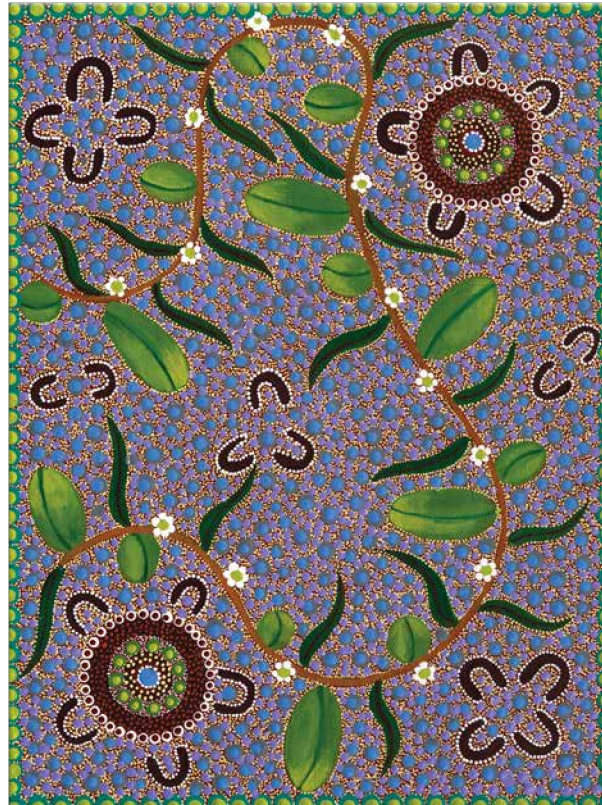
KATHLEEN
BUZZACOTT

TITLE

FAMILY PICKING
BUSH BANANAS

REGION

ARRERNTJE



Kathleen Buzzacott is an artist, poet, designer and entrepreneur, of Pitjantjatjara Scottish and English heritage, born in Alice Springs Central Australia. Kathleen's fine Central Desert Dot Painting style celebrates her discovery and connection to her indigenous heritage.

The Bush Banana is a totemic plant that often features in Aboriginal mythology and can be found in many Aboriginal paintings. Picking bush bananas is my husband's favourite things to do. After there has been a lot of rain, there are bush banana vines everywhere in Central Australia. I love the small ones the most. They taste like freshly shelled green peas, nothing like a banana at all.

Sometimes known as a native pear, the banana vine grows by winding up other trees. This is an important bush food plant for Aboriginal people and most parts (flowers, leaves, fruit and roots) are eaten.