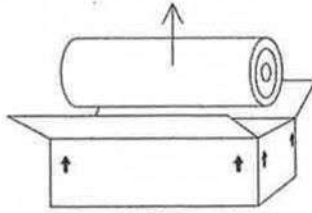


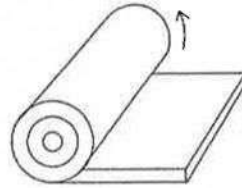
Installation diagram of the compressed soft bed



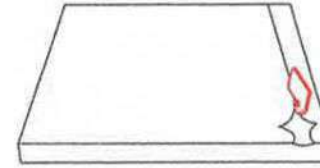
Do not use knives or sharp objects during unpacking



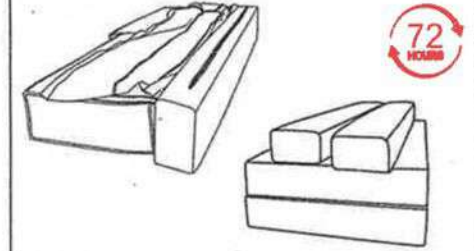
1. Remove the carton packaging and unroll the rolled sofa the floor



2. Open the roll package, unfold and smooth;



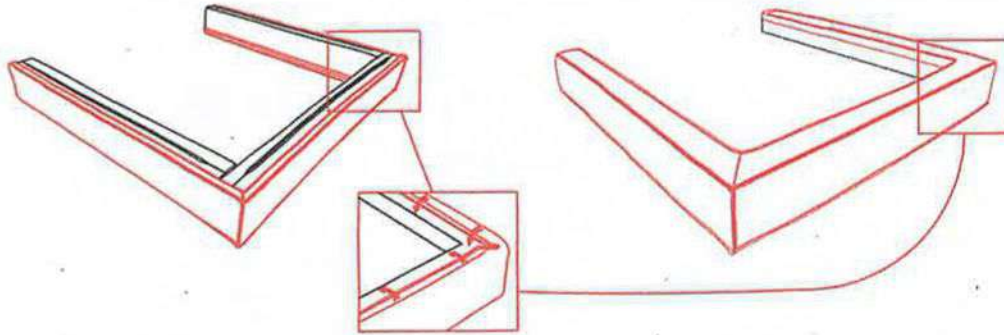
3. Use a box opener to open the box and avoid using sharp tools and knives that may scratch the fabric



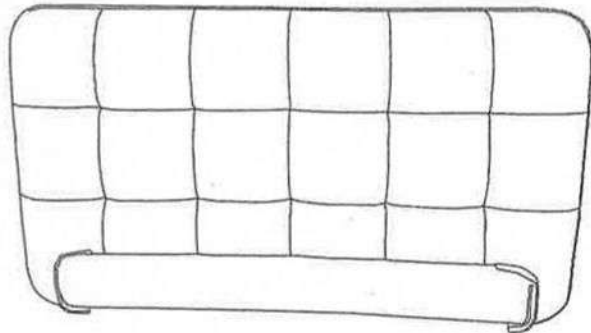
4. The compression sofa is opened and placed for 72 hours, waiting for the compression sponge to fully rebound

The bottom of the bed frame

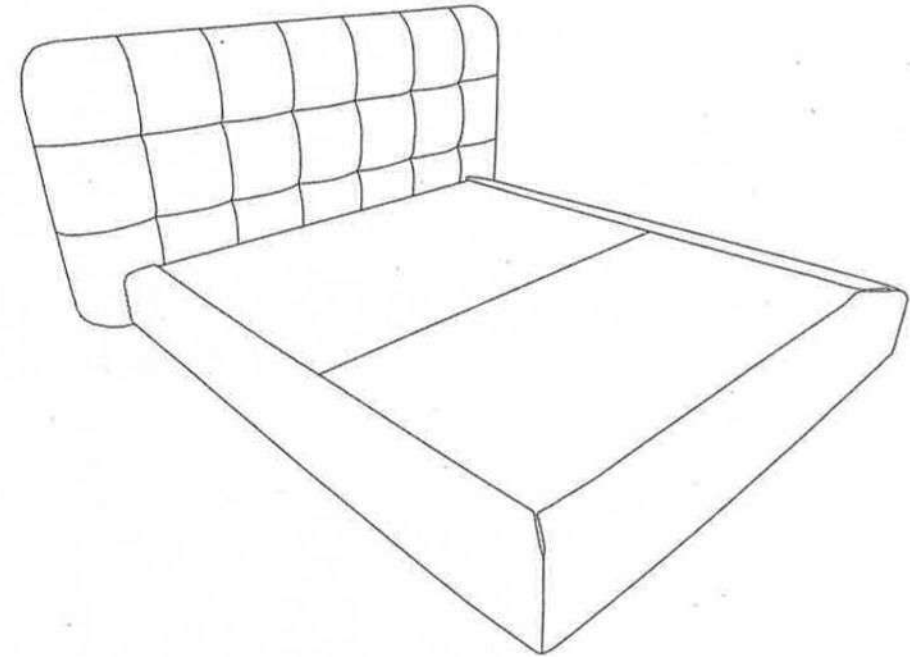
The surface of the bed frame



Stick the fabric cover to the edge of the bed in the direction of the arrow.



Wait by the bedside for the sponge to return to its original shape.



The bedside and the headboard are aligned and assembled together