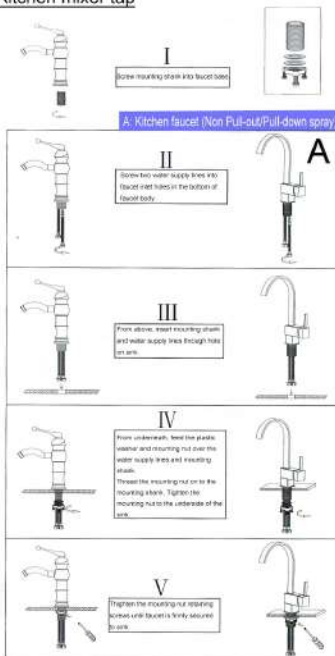
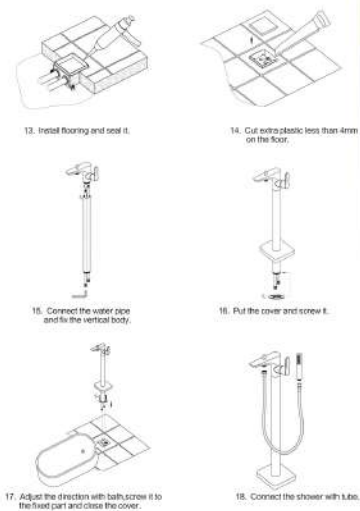
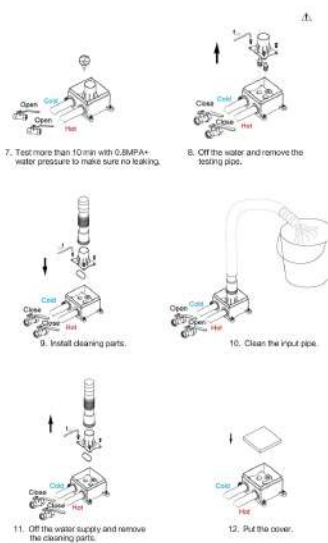
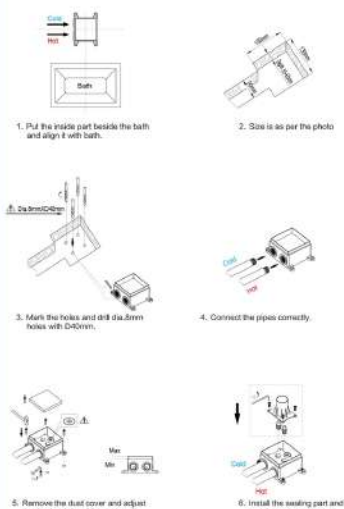


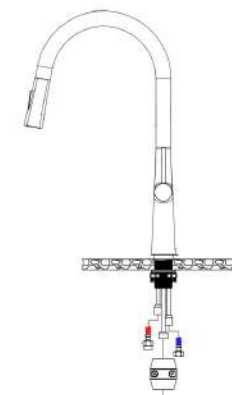
Kitchen mixer tap



Freestanding bath mixer



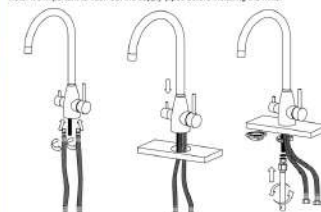
Pull out kitchen mixer tap



1. Place O-RING washer over the hole in kitchen where the mixer is to be installed.
2. Insert the mounting shank and water hoses through the hole on sink.
3. Screw two water hoses into mixer in the bottom of mixer body by hand (DO NOT USE SPANNER TO TIGHTEN AS IT WOULD DAMAGE THE HOSES).
4. From underneath, feed the plastic washer and mounting nut over the water hoses and mounting shank.
5. Thread the mounting nut onto the mounting shank. Tighten the mounting nut to the underside of the sink.
6. Attach the weight ball to the lowest point on the longest water tube.
7. It's important to flush out the supply pipes before installing the mixer and connecting the flexible hoses to hot/cold water supply, regardless whether a stop valve and filter has been installed or not. This procedure will stop foreign objects entering the cartridge.

3 Way Water Filter Tap

Note: It's important to flush out the supply pipes before installing the mixer.



1. Install the flexible hoses and ensure the flexible hoses are hand tightened into place (DO NOT USE SPANNER TO TIGHTEN AS IT WOULD DAMAGE THE HOSES).
2. Fit the mixer body onto the kitchen hole.
3. Connecting the flexible hoses to hot/cold water supply, and then connect the pure water hose to the water filter.

