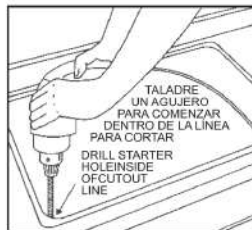


Drop in side:

1. Select the drop-in kitchen sink template that applies to the model sink you are installing. Cut out the inside of the template and discard the cutout portion. Locate the template front to rear and right to left on the countertop so the bowl will not interfere with the cabinets below. Attach the template to the countertop with masking tape and draw a pencil line around the inside of the template. Discard the template.

Or

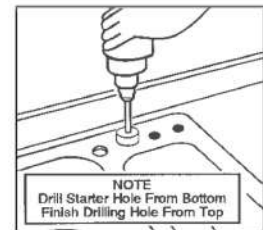
Invert sink and position onto the countertop. Locate sink front to rear and right to left so the bowl will not interfere with the cabinets below. Trace a pencil line around the outside edge of the sink and remove the sink from the countertop. Measure in 3/8" (10mm) from the initial sink outline and draw a second line inside the first. Draw a 1-1/2" radius at each corner. The second interior line will be your cut out line.



2. Drill starter hole inside of cutout line.



3. Using a saber saw, cut inside of cutout line. Trial fit sink to check proper fit.



4. Identify fixture hole locations. Drill a starter hole from reverse side. Working from the top side as illustrated, position a hole saw on the starter hole and drill to complete the fixture hole. To cool the hole saw and sink surface, a light application of water, periodically, is necessary. Attach faucet, drain, and accessories according to manufacturer's instructions.

Attention: We recommend that your sink be installed by an experienced professional contractor. These sinks are made for the use in solid surface countertops.

For undermount sinks, please note that the template is a reveal mounting option only.

We are not responsible for improper installation or damage to countertop during the installation process.