



INSTALLATION

Pesaro Butler Collection

INSTALLATION INSTRUCTIONS

SINK COMPOSITION

Vitreous China is an enamel coating that is applied to ceramics, particularly porcelain, after they've been fired, though the name can also refer to the finished piece as a whole. The coating makes the porcelain tougher, denser, and shinier, and it is a common choice for things like toilets and sink basins.

Read installation and Care instructions thoroughly before installation. Inspect your sink for any noticeable damage before installation. Check all local applicable plumbing and building codes.

IMPORTANT

Your PESARO Sink is individually hand-crafted and we suggest using experienced and professional installers or tradesman only. It requires a special cabinet with the front cut out to allow the APRON front of the sink unit. For custom cutting of countertop and installation of the actual sink, on-site installation is also recommended.

Acceptable variances are approximately 12mm, alignment to cut-out and precise application and trimming of any adhesive sealant are critical to a superior fit and finished look. Please take extra care in this regard.

Apron sinks require custom order cabinets. Please ensure the cabinet will not foul the sink front apron or mounting flange.

We recommend the sink be available for the cabinetmaker prior to it being installed, & during manufacturer of the cabinet + support frame.

*All installations should be carried out by a qualified tradesman in accordance with the national Plumbing & Drainage Code and any State or Local Authority Regulations. In accordance with AS/NZS 3500 series of standards and AS/NZS 4458 Local Authority water board, and Building Regulations may apply to the installation of this product, and you should consult the appropriate bodies on these requirements.

PRODUCT DIMENSIONS

Product dimensions may vary but should be within industry standards, hence the recommendation above should be followed at all times.

NOTE: Due to the nature of the material, models can differ up to 5mm from the listed dimensions. We advise that you do not cut your countertop based off of the dimensions in the specifications area of the website, but instead wait until your sink arrives to measure and cut the countertop to ensure a perfect fit.

We do not accept any liability for damage to countertop, sink feature, tapware or personal injury during installation.

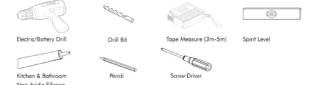
Warranty is void if installation instructions are not followed.

WARRANTY

5 Years Limited Manufacturers Warranty. 1 Year Limited Commercial Warranty.

TOOLS REQUIRED FOR INSTALLATION

Be sure to use Proper tools and always wear personal safety accessories for your protection



All measurements are subject to accepted manufacturing tolerances. To ensure accuracy please check actual product dimensions before installation. The manufacturer reserves the right to change specifications at any time without prior notification. Contact place of purchase with all relevant details should you have any questions or queries relating to this product.

INSTALLATION OPTIONS

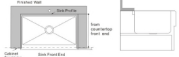
The apron sink offers installation options depending on your design



Caution: All installation types need to allow room for tapware installation. Ensure adequate clearance behind the sink for tapware and backsplash, as well as full range of motion for tapware spouts and handles.

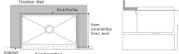
UNDERMOUNT

Typical Undermount installation with 6.5mm reveal recommended.



TOP MOUNT & ABOVE COUNTER

Typical Top Mount and above counter installation.



Above counter installation may expose side sink sides to be raised above the countertop.

*All installations should be carried out by a qualified tradesman in accordance with the national Plumbing & Drainage Code and any State or Local Authority Regulations. In accordance with AS/NZS 3500 series of standards and AS/NZS 4458 Local Authority water board, and Building Regulations may apply to the installation of this product, and you should consult the appropriate bodies on these requirements.

INSTALLATION STEPS

1. Prepare the Sink Base Cabinet

The apron sink requires custom order sink base cabinets with a front cutout to accommodate a 250mm deep sink. Build structural supports on the inside frame of the sink base cabinet. The structural supports must support the weight of the sink and any attachments such as garbage disposal units.

When the sink is placed onto the cabinet support, make sure the top of the sink is evenly flush against the bottom of the countertop.

Allow clearance for water supply lines and waste outlet drains or garbage disposal, as necessary.

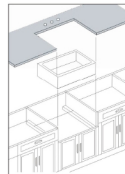
2. Make Template and Cutout.

Depending on the installation option, make proper cutout of the countertop. We recommend a 6.5mm reveal on 3 sides when installed undermount style. For a top mount or above counter installation, cut countertop along with outside of sink profile. Front end of apron is designed to be installed 20mm extended out beyond the front end of the countertop.

Cut countertop accordingly. No template is provided due to the custom nature of each application and installation. The actual sink is used as the template guide for each installation. After centering the sink and allowing tapware and backslashes, use a pencil to outline the sink as your guide for the cutout, allowing for any reveal before the actual cutting.

All measurements are subject to accepted manufacturing tolerances. To ensure accuracy please check actual product dimensions before installation. The manufacturer reserves the right to change specifications at any time without prior notification. Contact place of purchase with all relevant details should you have any questions or queries relating to this product.

INSTALLATION STEPS CONTINUES



3. Set the Sink

Set the sink on top of the cabinet or into the cabinet front cutout. Apply sealant if necessary as a gasket between the sink and cabinet.

4. Install the Countertop

Carefully clean bottom of countertop and top flange of sink with denatured alcohol. Apply bead of silicone adhesive (not supplied) around the top edge of the sink.

Place countertop onto the sink.

Remove excess sealant from the lip of any surfaces with a cleaner recommended by manufacturer of adhesive sealant.

*All installations should be carried out by a qualified tradesman in accordance with the national Plumbing & Drainage Code and any State or Local Authority Regulations. In accordance with AS/NZS 3500 series of standards and AS/NZS 4458 Local Authority water board, and Building Regulations may apply to the installation of this product, and you should consult the appropriate bodies on these requirements.

Always

Clean your sink every day to prevent a buildup of soap scum, grease & dirt. Use a solution of 2 tablespoons of dishwashing liquid to a 4 litres of water. Scrub the sink's surface using a soft non-abrasive cloth or sponge.

Wipe the sink dry with a dish towel or other soft cloth to eliminate water stains.

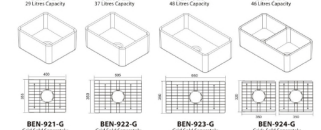
Never

Use a steel wool or scoring pad as it damages the sink surface and causes discoloration. Let household cleaning agents or bleach sit in your sink for long periods of time as this may ruin the finish of your sink.

Leave rubber mats, sponges, or cleaning pads in the sink for long period of time as this may ruin the finish of your sink.

Use any drain cleaning products containing sulphuric acid or hydrochloric acid as this will attack the sink. Silver cleaners can also contain acids that will damage the sink surface.

Use the inside of the sink as the cutting edge.



All measurements are subject to accepted manufacturing tolerances. To ensure accuracy please check actual product dimensions before installation. The manufacturer reserves the right to change specifications at any time without prior notification. Contact place of purchase with all relevant details should you have any questions or queries relating to this product.