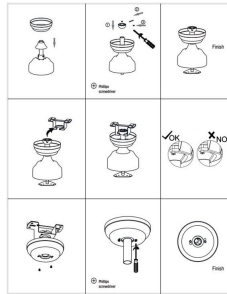


01704010-0101



**32-INCH HERITAGE CEILING FAN  
USE AND CARE GUIDE**

**Install downrod assembly**



**Installation of the hanging bracket**

**CONCRETE CEILING**

For concrete ceiling, use the perforation kit with expansion bolts as detailed below according to the length of expansion screws. Then use the electrical expansion screws to fix the hanging bracket into the ceiling (please refer to actual requirements of the customer).

**STEP 1 A CONCRETE CEILING**

SWITCH OFF THE ELECTRICAL MAINS AT THE CIRCUIT BREAKER FUSE BOX.

- 1) Use the Hanging Bracket. In a specific mark the spots where the 4 Expansion bolts will be drilled.
- 2) Remove the Hanging Bracket. Use 2 Holes and mark 2 Expansion bolts into the concrete ceiling, install the mounting bracket and secure with 4x4 Washers, Spring Washers and Nuts.

**IMPORTANT: SCREWS & NUTS MUST BE TIGHTENED FULLY!**

**WOODEN CEILING**

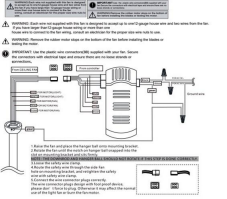
For wooden ceiling, use wood screws to drill the wooden beams or the "joist/batt" to fix the hanging bracket (please refer to actual requirements of the customer).

**STEP 2 A WOODEN CEILING**

SWITCH OFF THE ELECTRICAL MAINS AT THE CIRCUIT BREAKER FUSE BOX.

- 1) Use the Hanging Bracket. As a guide, mark the spots where the 4 Self Tapping Screws will be drilled.
- 2) Remove the Hanging Bracket. Use 4 Holes for 3/16" diameter. Install the mounting bracket into wooden ceiling with the Self Tapping Screws Washers.

**Making the electrical connections**



**Install remote control**



**Preparing for mounting**



1) Remove the mounting bracket from the ceiling. The ceiling must be strong enough to support the weight of the fan. Please refer to the actual requirements of the customer. Please refer to the actual requirements of the customer.

**FAN MUST BE KEPT AT THE HIGH SPEED**

**Pre-Installation**

Light kit (for assembly)

For Motor assembly - 1 PCS  
Light kit (for assembly) - 1 PCS  
LED - 1 PCS

Blade - 5 PCS  
Blade screw - 1 PCS

Motor mounting bracket (Double entry) - 1 PCS  
Motor mounting bracket (Single entry) - 1 PCS  
Canopy - 1 PCS  
Canopy cover - 1 PCS

**NOTE:**

1. Please refer to the actual requirements of the customer.

2. Please refer to the actual requirements of the customer.

3. Please refer to the actual requirements of the customer.

4. Please refer to the actual requirements of the customer.

5. Please refer to the actual requirements of the customer.

6. Please refer to the actual requirements of the customer.

7. Please refer to the actual requirements of the customer.

8. Please refer to the actual requirements of the customer.

9. Please refer to the actual requirements of the customer.

10. Please refer to the actual requirements of the customer.

**NOTE** Hardware not shown is actual site.

**Fastening the blade arms to the motor**

1) Remove the pre-installed screws and install the supplied blades.

2) Fasten the blade arms to the motor by inserting the supplied screws into the motor housing and tightening the pre-installed screws.

3) Tighten the blade arm screws.

4) Tighten the blade arm screws.

5) Tighten the blade arm screws.

6) Tighten the blade arm screws.

7) Tighten the blade arm screws.

8) Tighten the blade arm screws.

9) Tighten the blade arm screws.

10) Tighten the blade arm screws.

**Install downrod assembly**

1) Carefully hold the motor wires up through the mounted downrod.

2) Tighten the downrod cap screw.

3) Tighten the downrod cap screw.

4) Tighten the downrod cap screw.

5) Tighten the downrod cap screw.

6) Tighten the downrod cap screw.

7) Tighten the downrod cap screw.

8) Tighten the downrod cap screw.

9) Tighten the downrod cap screw.

10) Tighten the downrod cap screw.

**Hang the fan**

1) Lift the fan motor assembly up to the mounting bracket and hook the fan motor assembly onto the mounting bracket (please refer to actual requirements of the customer).

2) Tighten the fan motor assembly.

3) Tighten the fan motor assembly.

4) Tighten the fan motor assembly.

5) Tighten the fan motor assembly.

6) Tighten the fan motor assembly.

7) Tighten the fan motor assembly.

8) Tighten the fan motor assembly.

9) Tighten the fan motor assembly.

10) Tighten the fan motor assembly.

**Install canopy**

1) Remove the canopy cover and insert the key bolts on the mounting bracket.

2) Tighten the canopy cover.

3) Tighten the canopy cover.

4) Tighten the canopy cover.

5) Tighten the canopy cover.

6) Tighten the canopy cover.

7) Tighten the canopy cover.

8) Tighten the canopy cover.

9) Tighten the canopy cover.

10) Tighten the canopy cover.

**Use of remote control**

