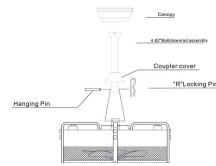


HEM-4012AU



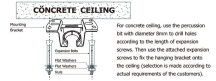
RENCH DEGRADATE CEILING FAN USER AND CARE GUIDE

Fastening the blade arms to the motor

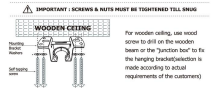


- Loosen, but do not remove, the two screws on the outer sides of the motor housing.
- Align the holes of the fan blades with the holes of the motor housing.
- Insert the 1/2" locking pin into the hole of the motor housing and the hole of the fan blade.
- Insert the 4x4 motor mount assembly into the hole of the motor housing and the hole of the fan blade.

Installation of the hanging bracket

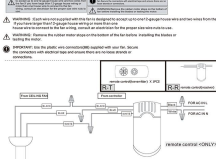


- STEP 1 - CONCRETE CEILING**
- Turn off the electrical mains at the circuit breaker fuse box.
 - Mark the Mounting Bracket as a guide, mark the spots where the 4 Expansion Bolts will be drilled.
 - Remove the Mounting Bracket, drill 2 holes and insert 2 Expansion Bolts into the concrete ceiling, insert the mounting bracket and secure with the Expansion Bolts Washers and Nuts.

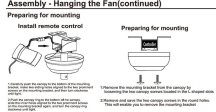


- STEP 2 - WOODEN CEILING**
- Turn off the electrical mains at the circuit breaker fuse box.
 - Mark the Mounting Bracket as a guide, mark the spots where the 4 Self-Tapping Screws will be drilled.
 - Remove the Mounting Bracket, drill 4 holes for 3/16" diameter, install the mounting bracket onto wooden ceiling with the 4 Self-Tapping Screws Washers.

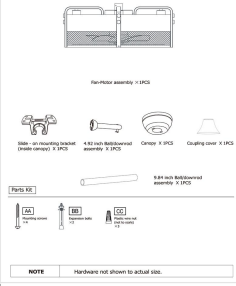
Making the electrical connections



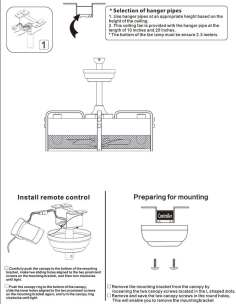
Assembly - Hanging the Fan (continued)



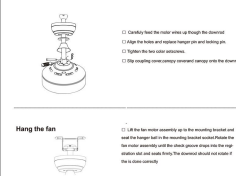
Pre-Installation



INSTALLATION INSTRUCTION



Initial downwind assembly



Use of remote control

