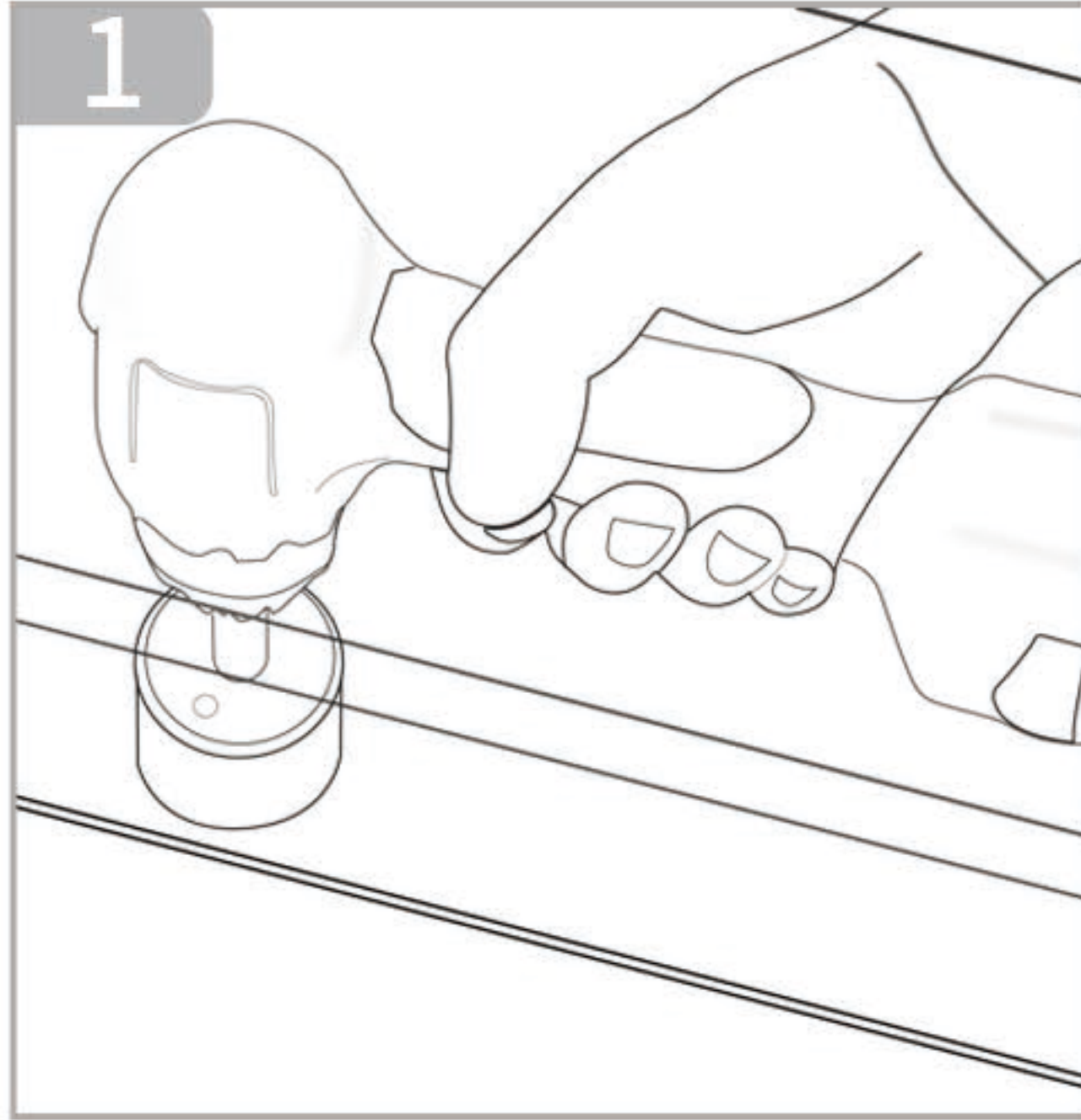


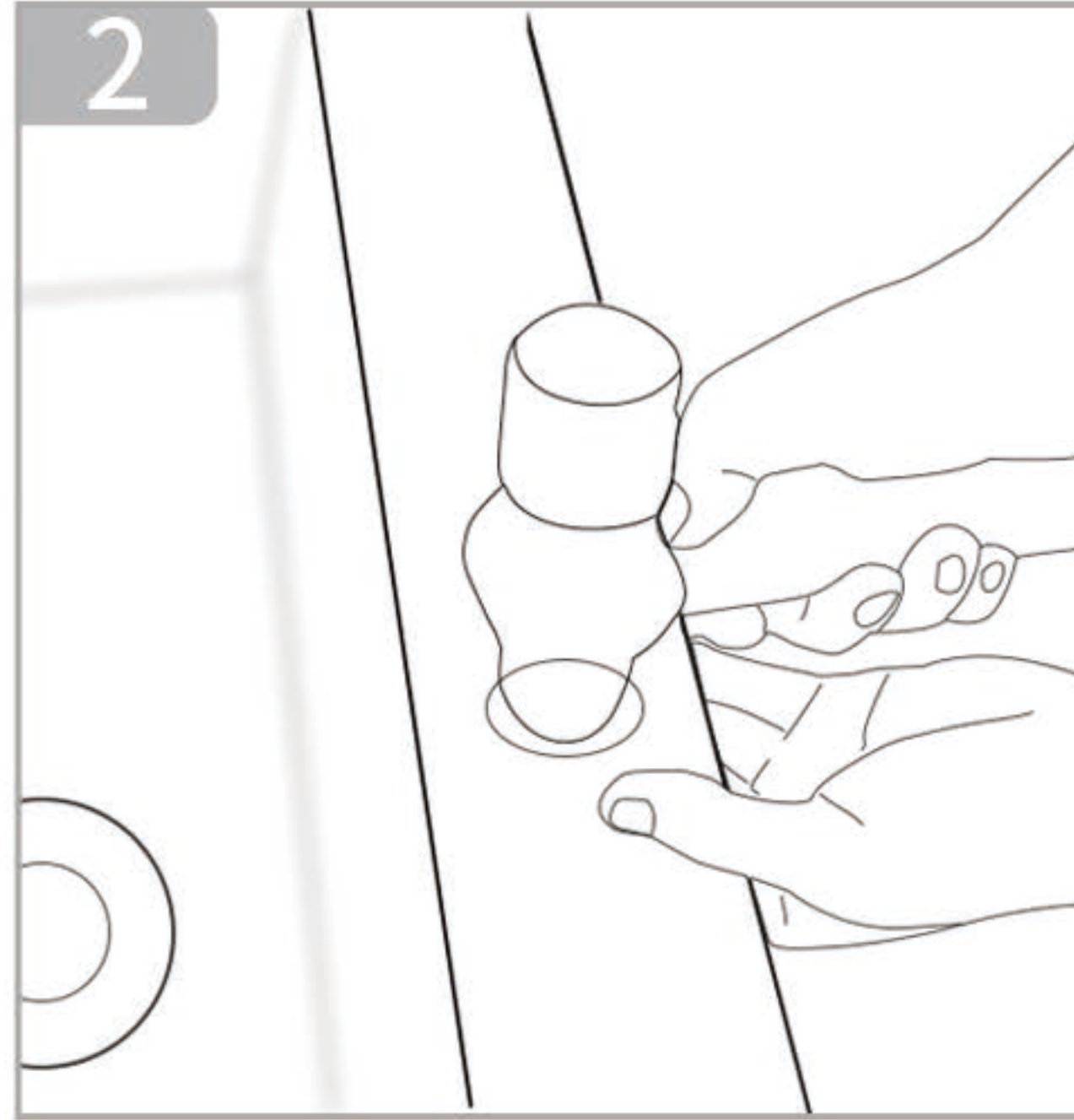
cut out size for topmount

PS: the cut out size is for reference only, we recommend that your sink be installed by a professional contractor.

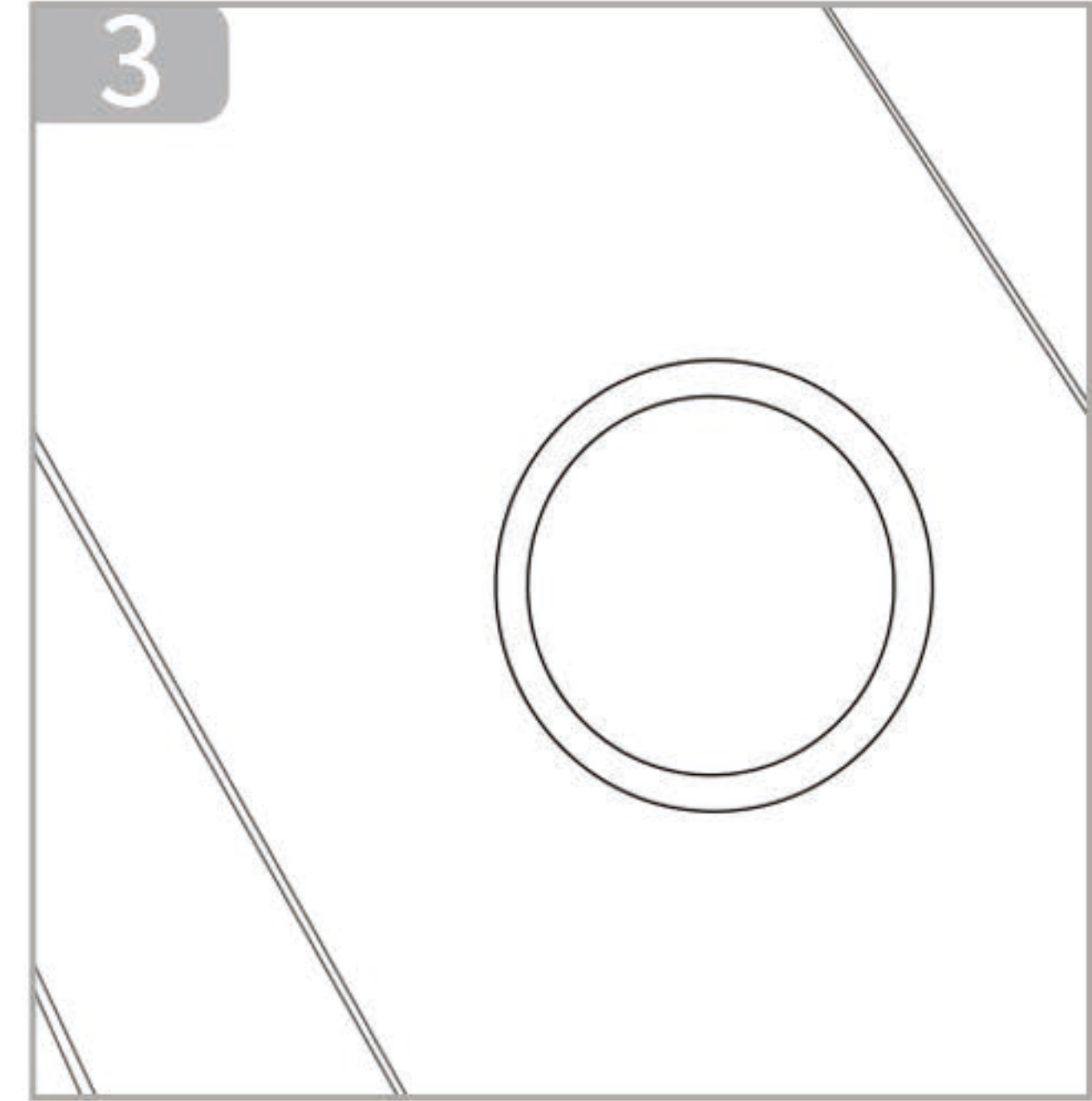
The sink comes with pre-drilled tap holes and the positions have been shown on the dimension chart.



1. Drill the hole from the non-visible side with a  $\phi 35\text{mm}$  diamond drill bit.

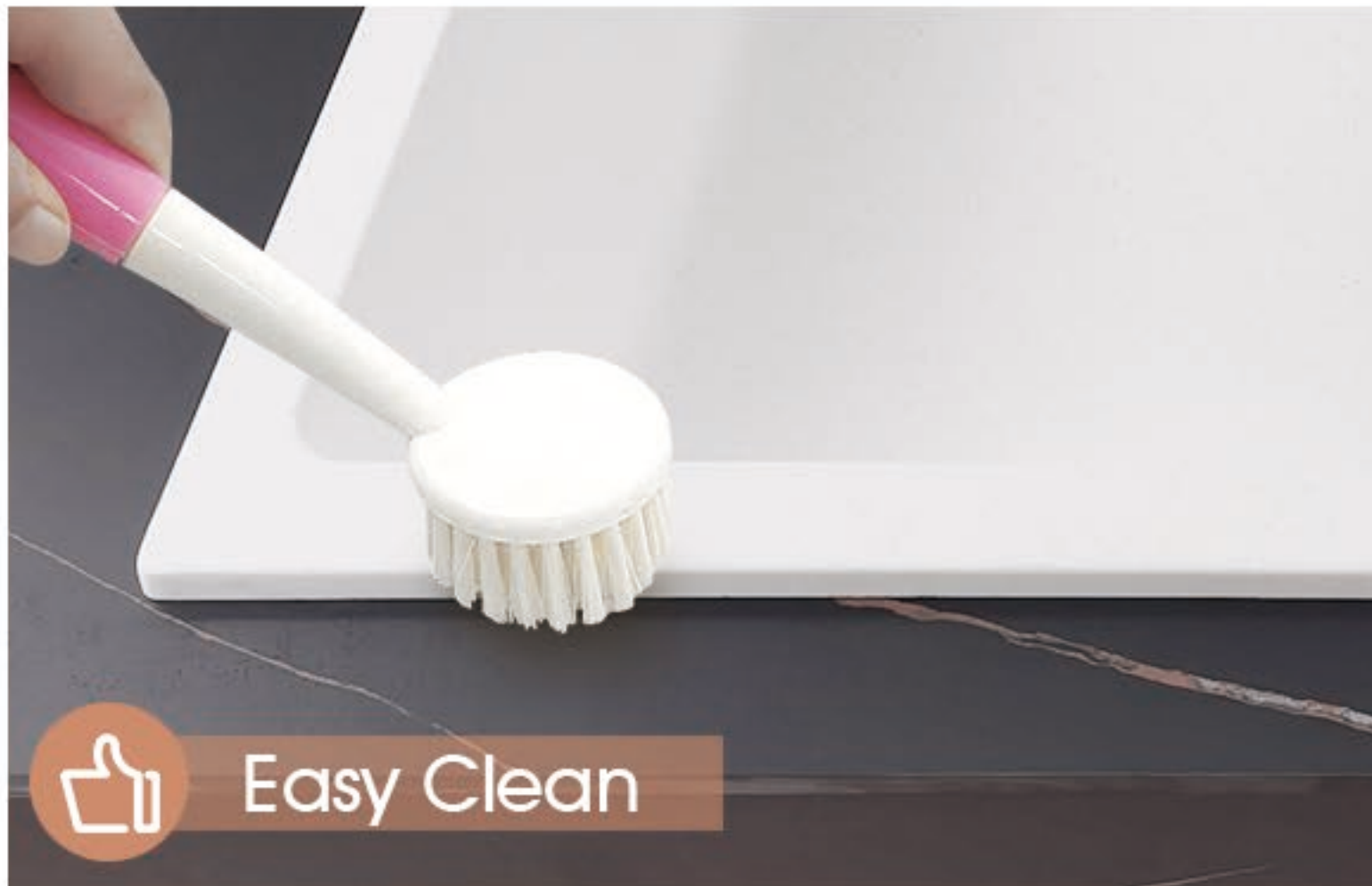
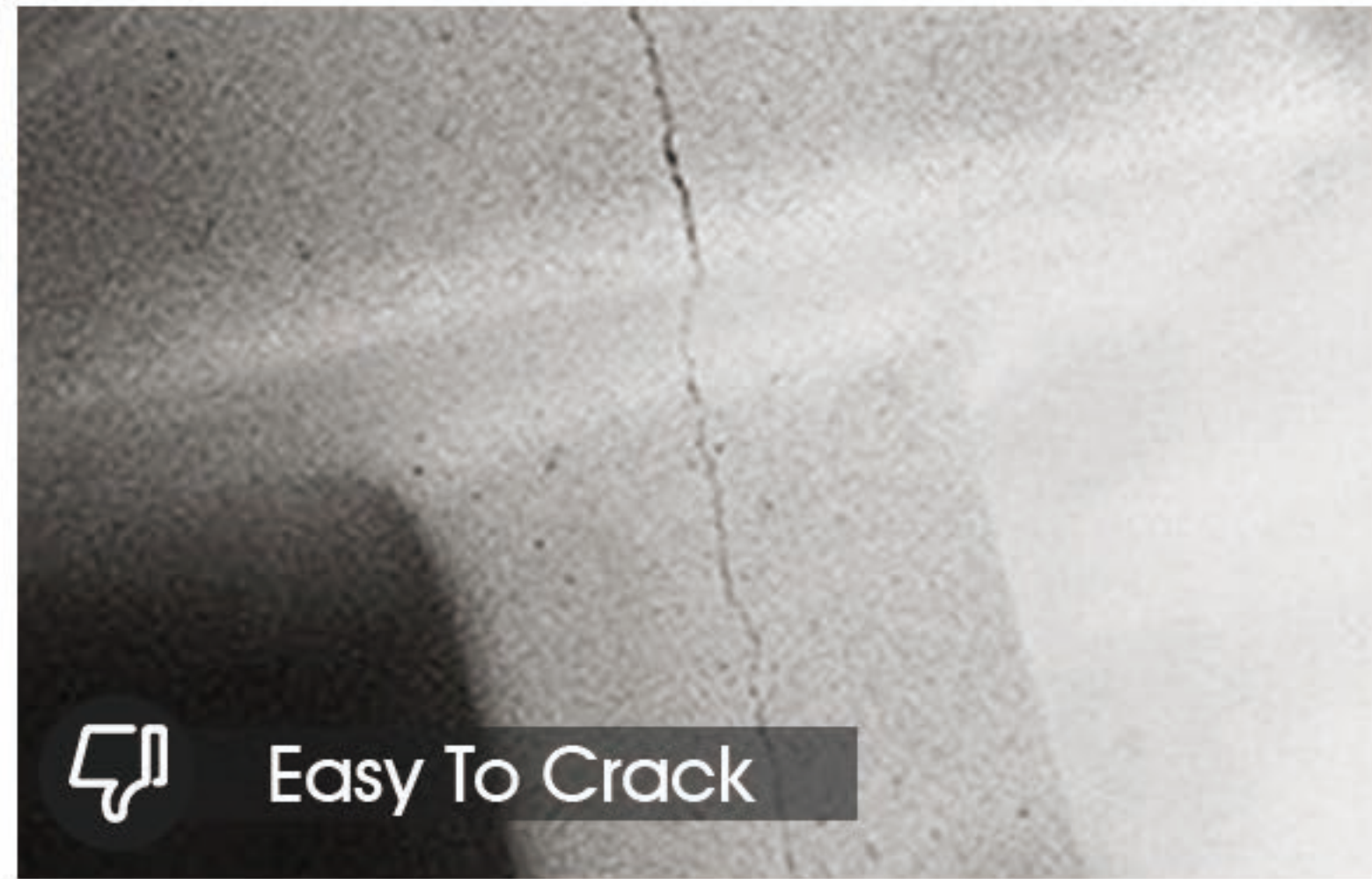


2. Use a hammer to knock the visible side as to go through the hole.



3. Trim the scrap around the hole.





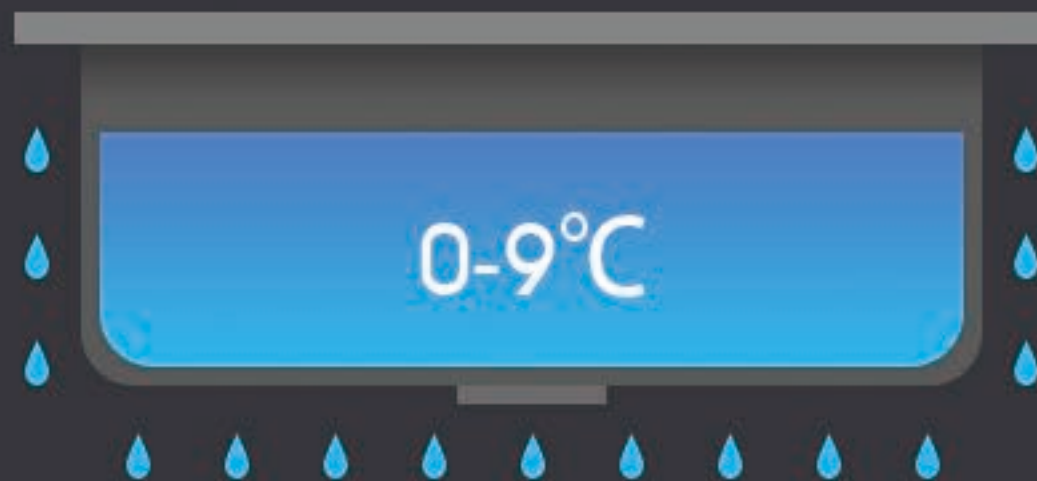
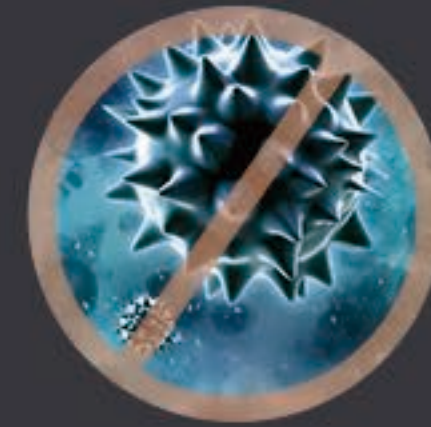
- ✓ Non-fade and non deformation
- ✓ Wear and crush-resistant
- ✓ Heated-resistant
- ✓ 304 stainless steel waste strainer

- ✗ Easy to crack
- ✗ Cheap granite
- ✗ May cause lead poisoning
- ✗ Rusty sink and waste strainer

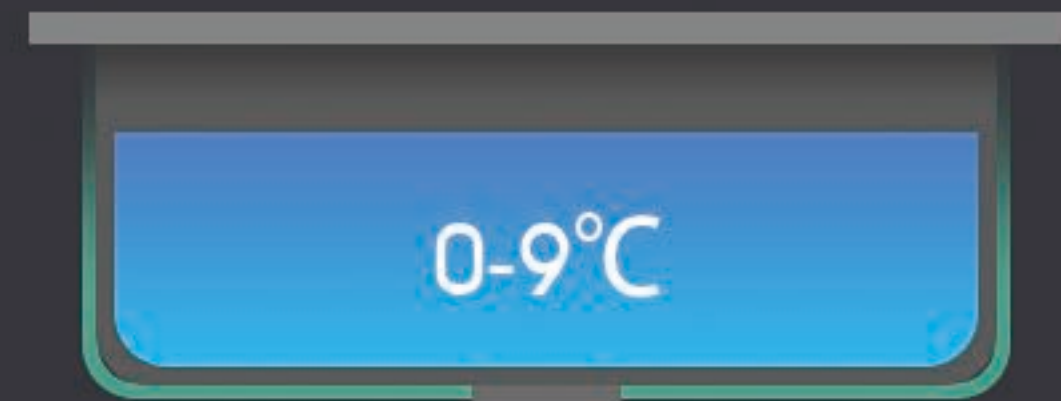


# Anti-Condensation Paint

Reduce black mould and fungal growth, keeping the surface clean and healthy and odour free.



Without  
Condensate Coating



With  
Condensate Coating

# Waterproof And Oilproof

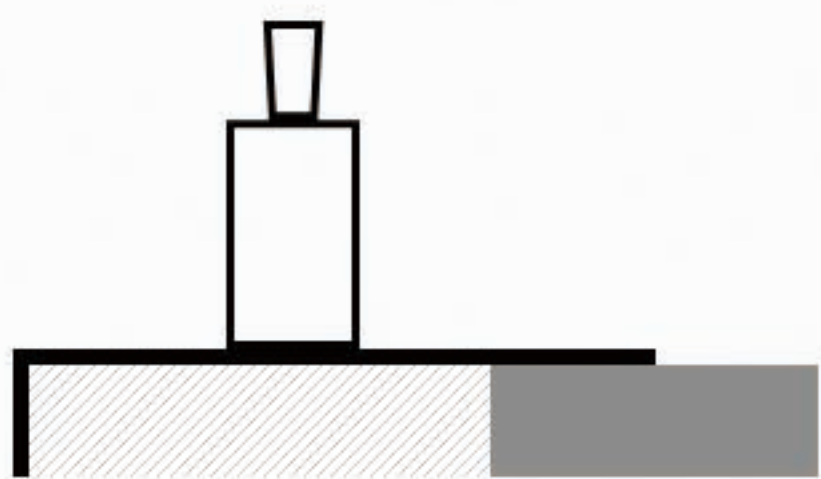
Environmentally safe and  
not easy to be scratched.



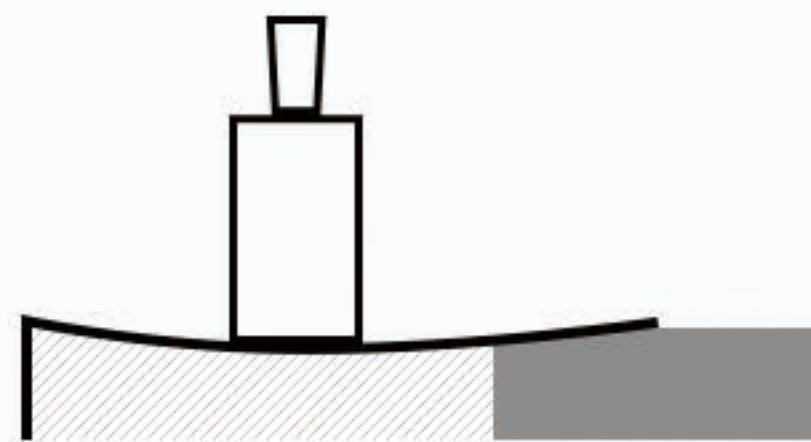


# 10mm Moderate Thickness

Protect the dishware better and more stable than the 8mm one.



Our Kitchen Sink



Other Sink



# 90mm AU Standard Strainer Waste

High quality, more efficiently  
to filter residue.





## Overflow design

Prevents water from spilling over the top of the sink

Allows the sink to drain faster by introducing air into the system



# Heat Resistant

Bring You  
A Healthy Life.



# Food Safe

Eco-environmental  
friendly

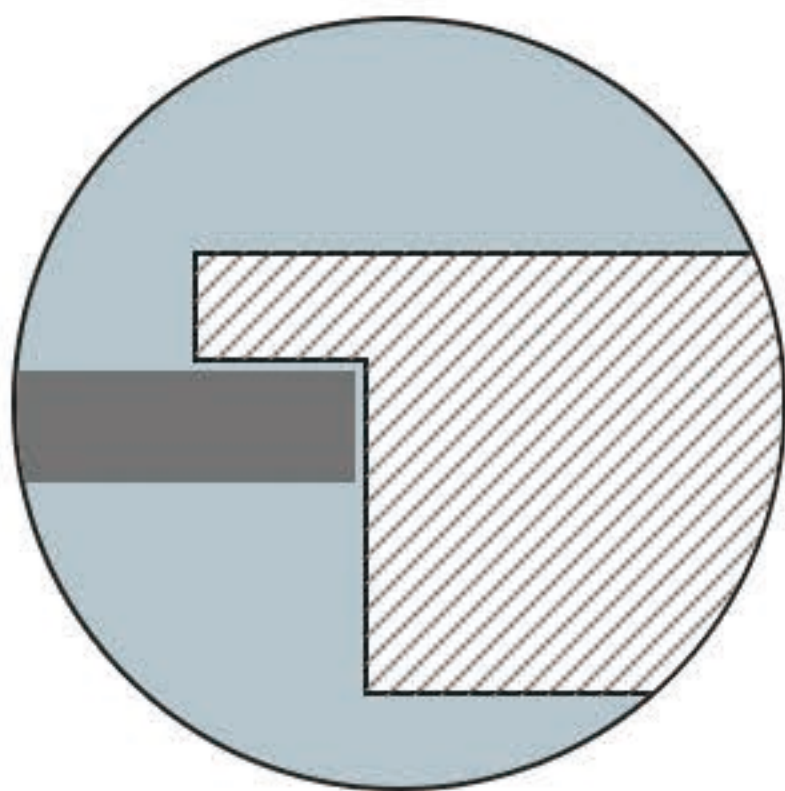


# Round Internal Corners

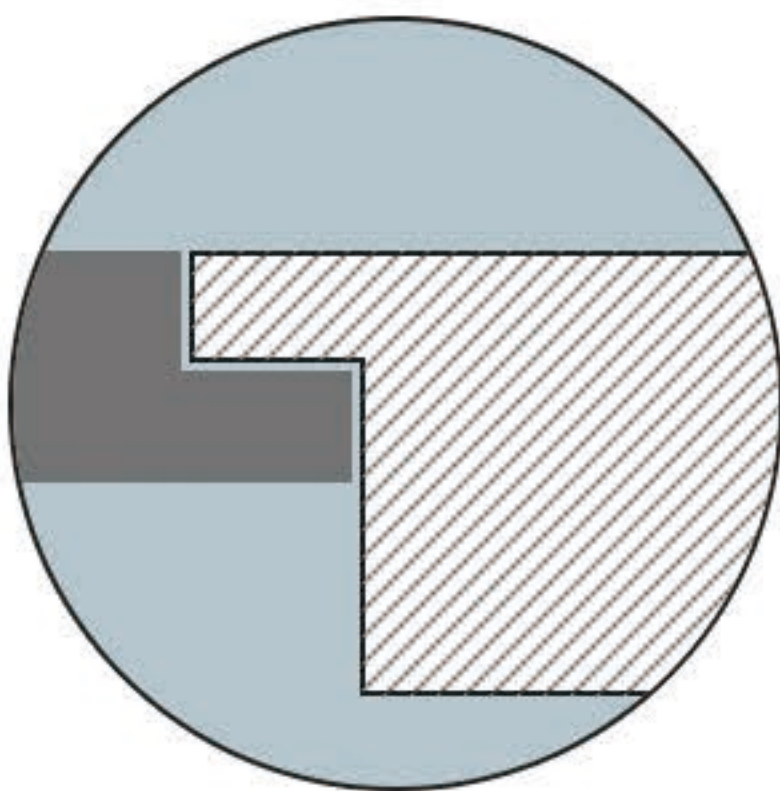
Easy to clean, prevent  
dirt and bacteria.



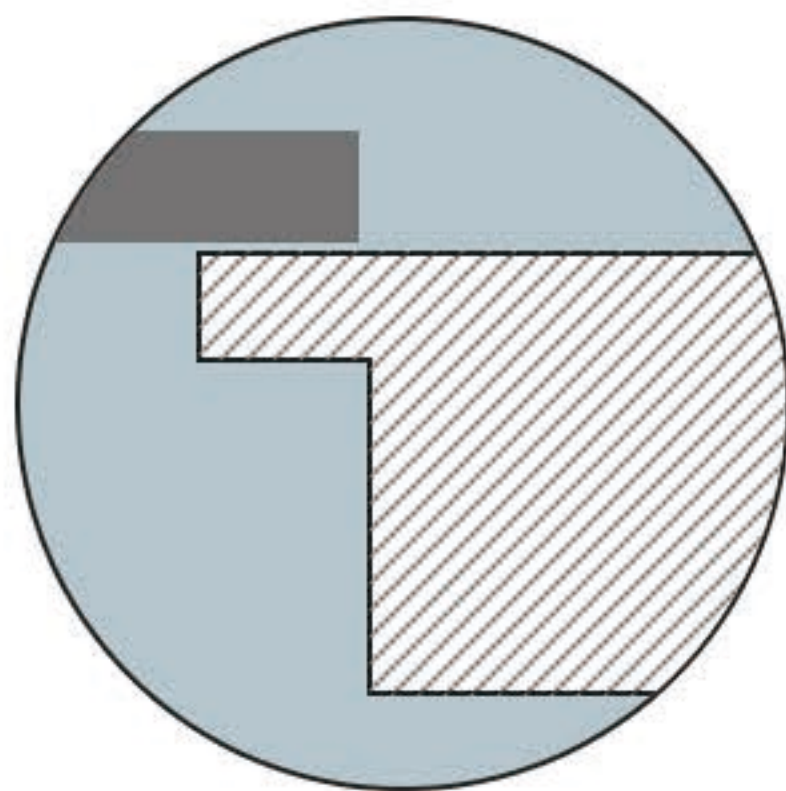
# Versatile Installation



Drop-in Mount  
Recommended



Flush Mount  
Recommended



Under Mount