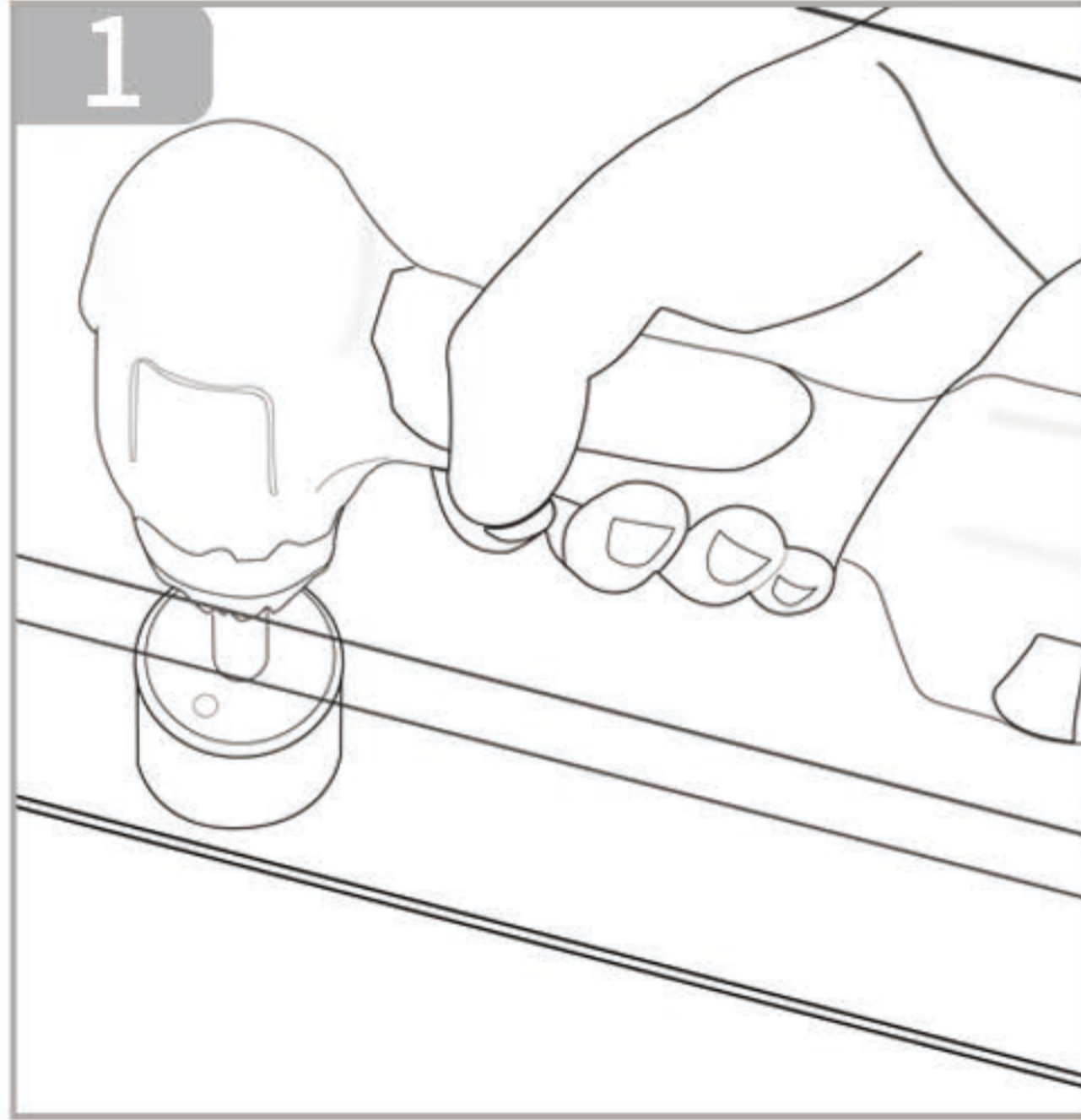


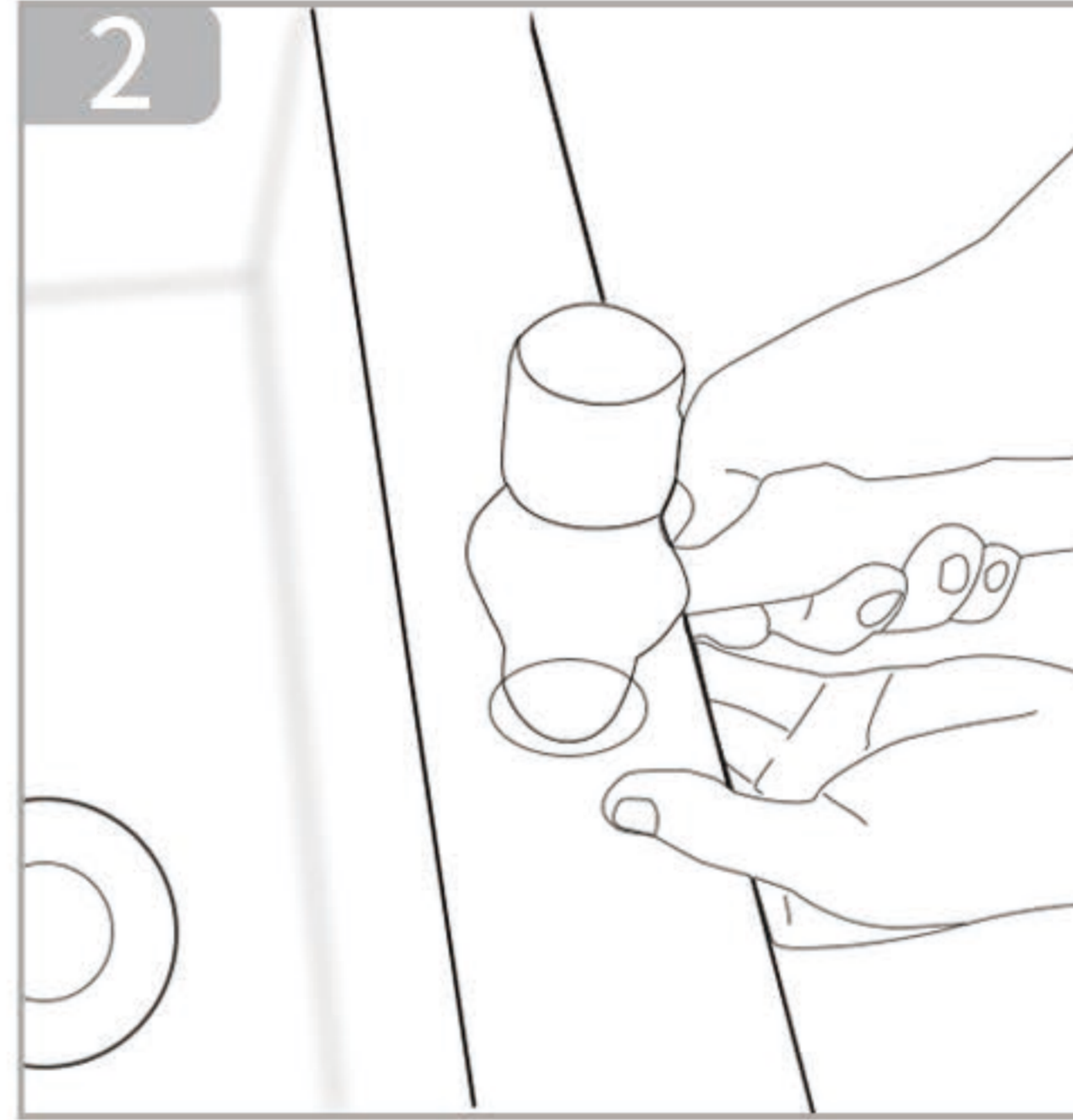
cut out size for topmount

PS: the cut out size is for reference only, we recommend that your sink be installed by a professional contractor.

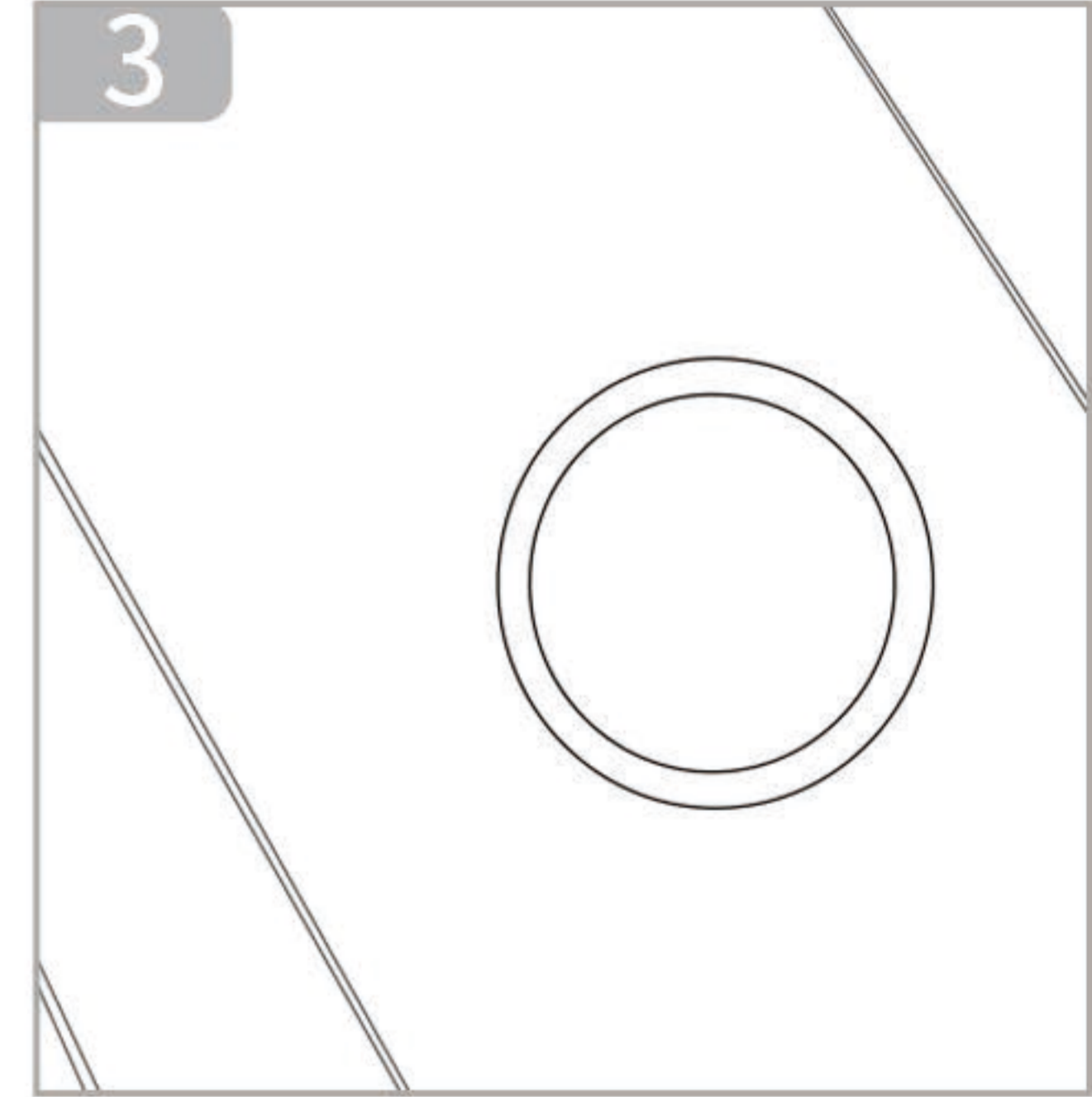
The sink comes with pre-drilled tap holes and the positions have been shown on the dimension chart.



1. Drill the hole from the non-visible side with a $\phi 35\text{mm}$ diamond drill bit.



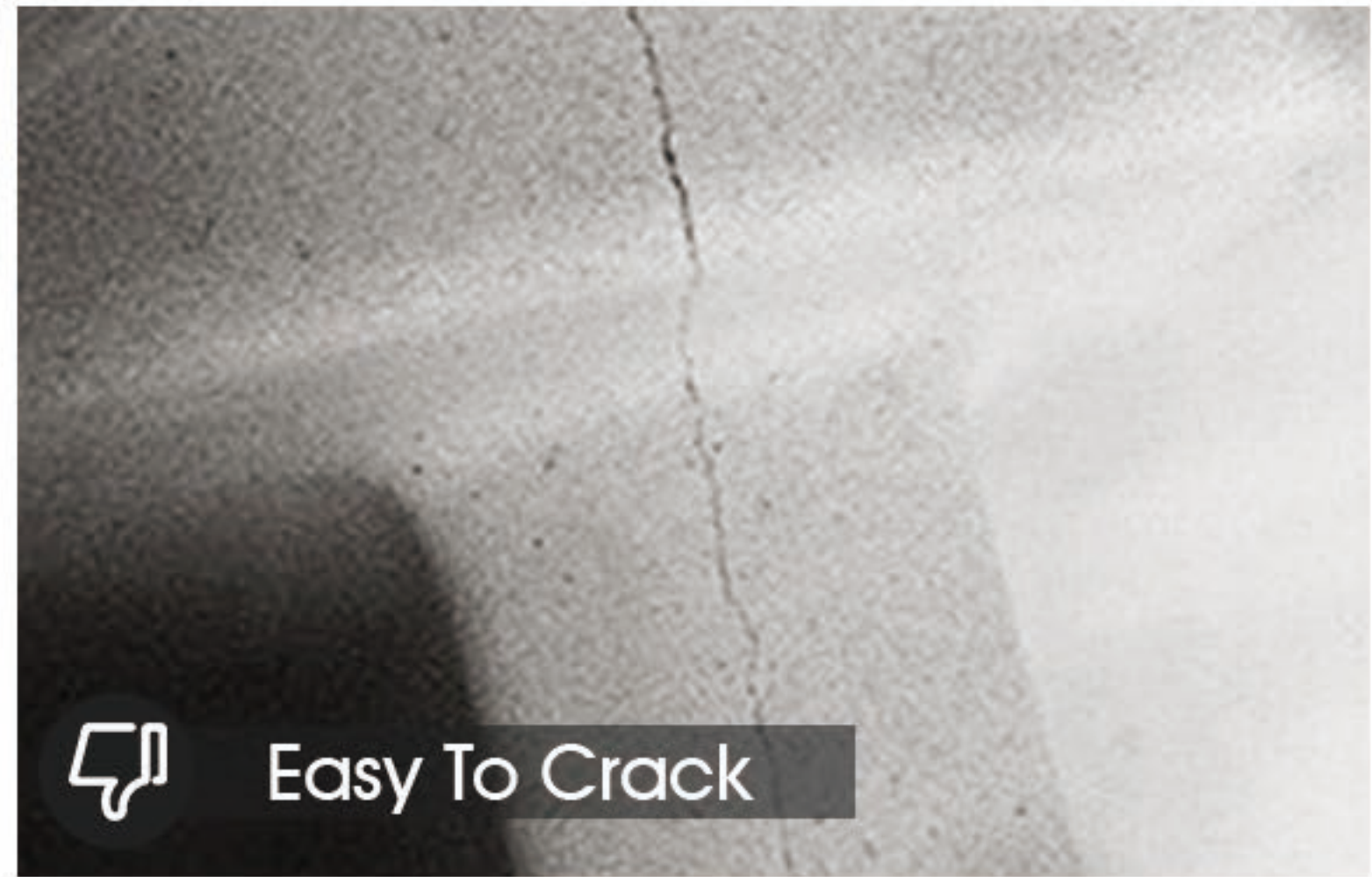
2. Use a hammer to knock the visible side as to go through the hole.



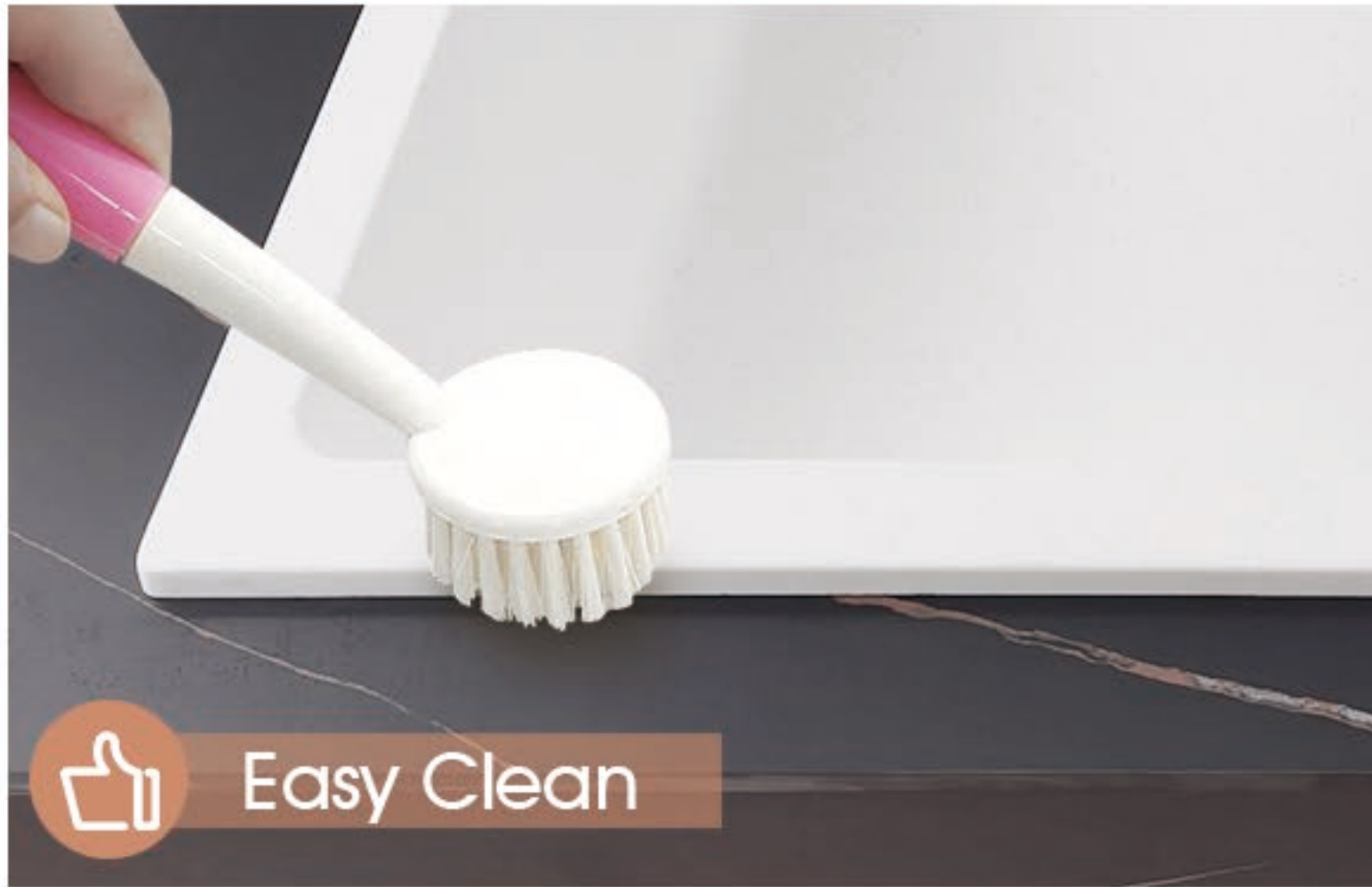
3. Trim the scrap around the hole.



Anti-Scratch



Easy To Crack



Easy Clean



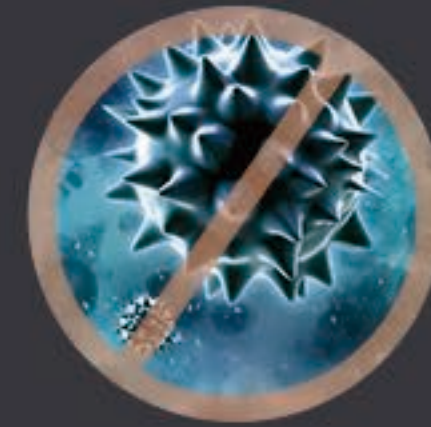
Difficult To Clean

- ✓ Non-fade and non deformation
- ✓ Wear and crush-resistant
- ✓ Heated-resistant
- ✓ 304 stainless steel waste strainer

- ✗ Easy to crack
- ✗ Cheap granite
- ✗ May cause lead poisoning
- ✗ Rusty sink and waste strainer

Anti-Condensation Paint

Reduce black mould and fungal growth, keeping the surface clean and healthy and odour free.



Without
Condensate Coating



With
Condensate Coating

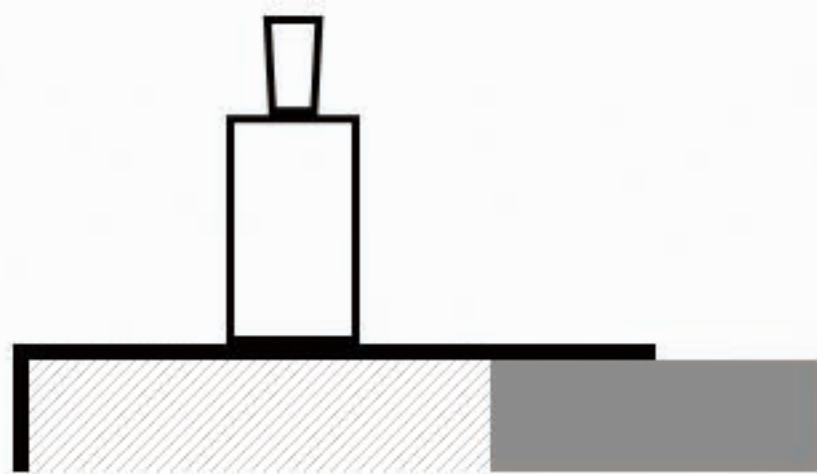
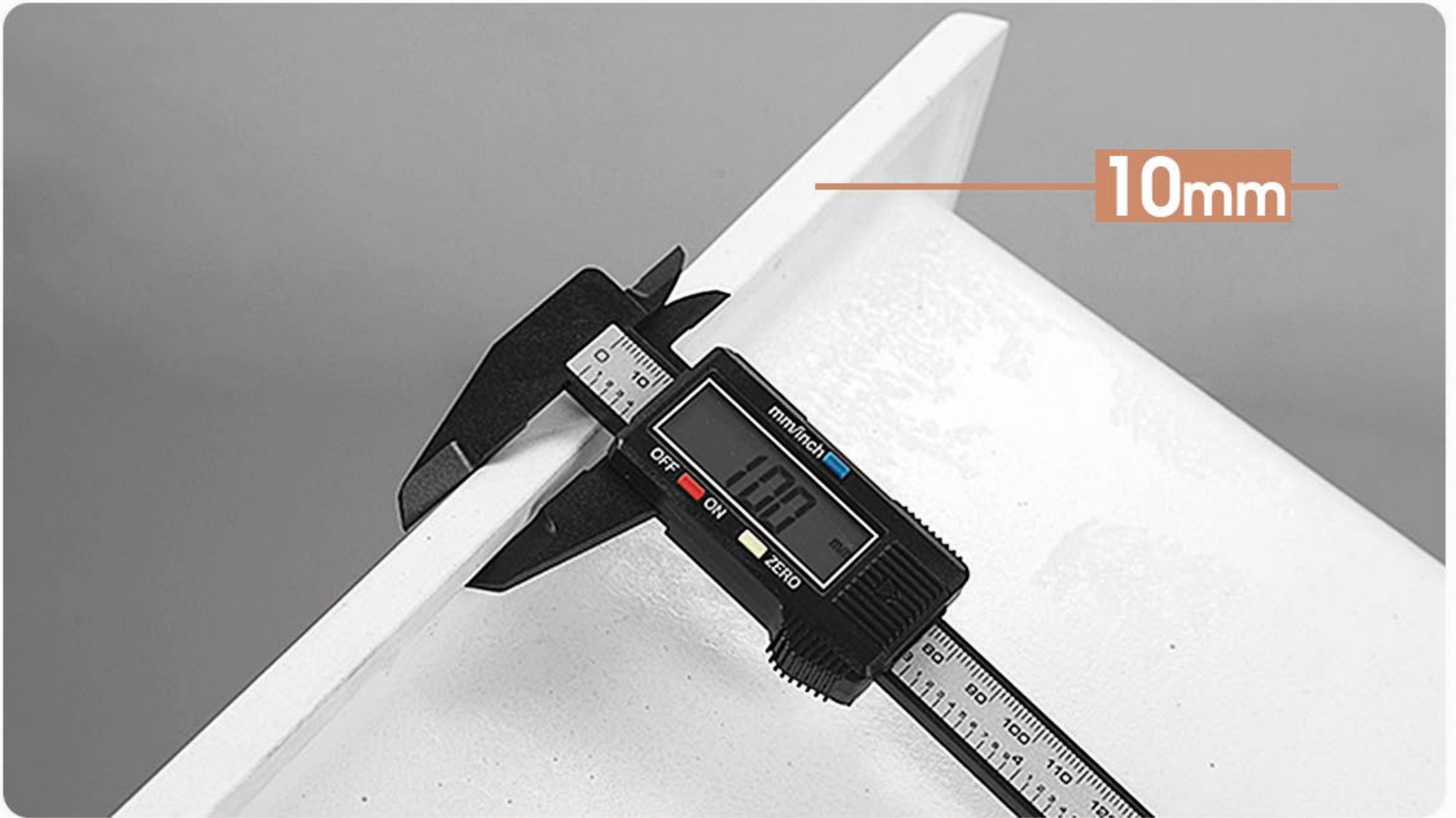
Waterproof And Oilproof

Environmentally safe and
not easy to be scratched.

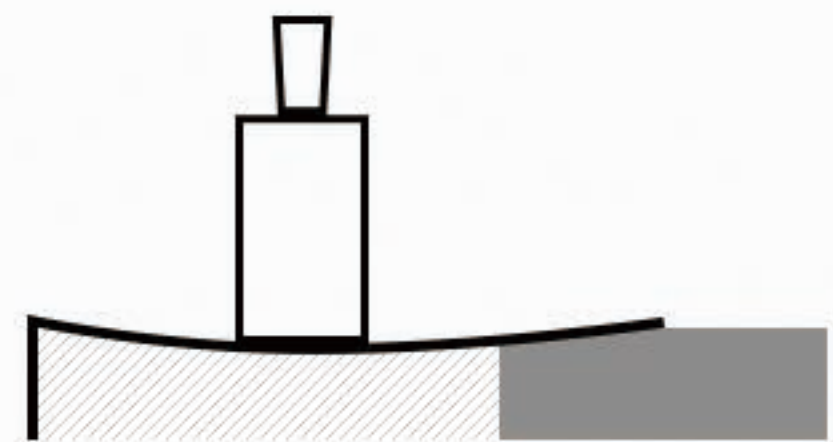


10mm Moderate Thickness

Protect the dishware better and more stable than the 8mm one.



Our Kitchen Sink



Other Sink

90mm AU Standard Strainer Waste

High quality, more efficiently
to filter residue.





Overflow design

Prevents water from spilling over the top of the sink

Allows the sink to drain faster by introducing air into the system

Heat Resistant

Bring You
A Healthy Life.



Food Safe

Eco-environmental
friendly

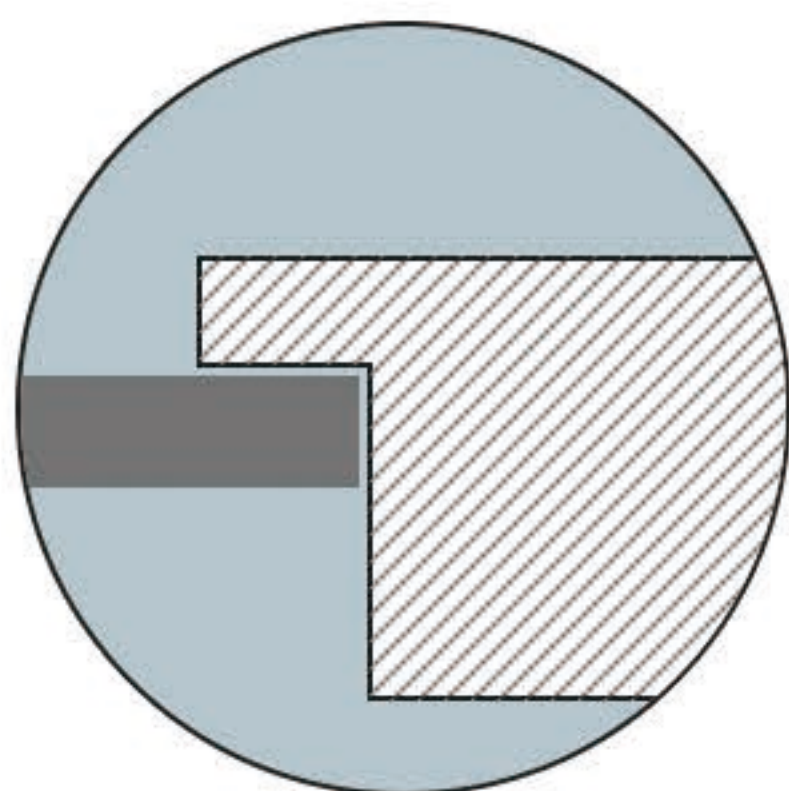


Round Internal Corners

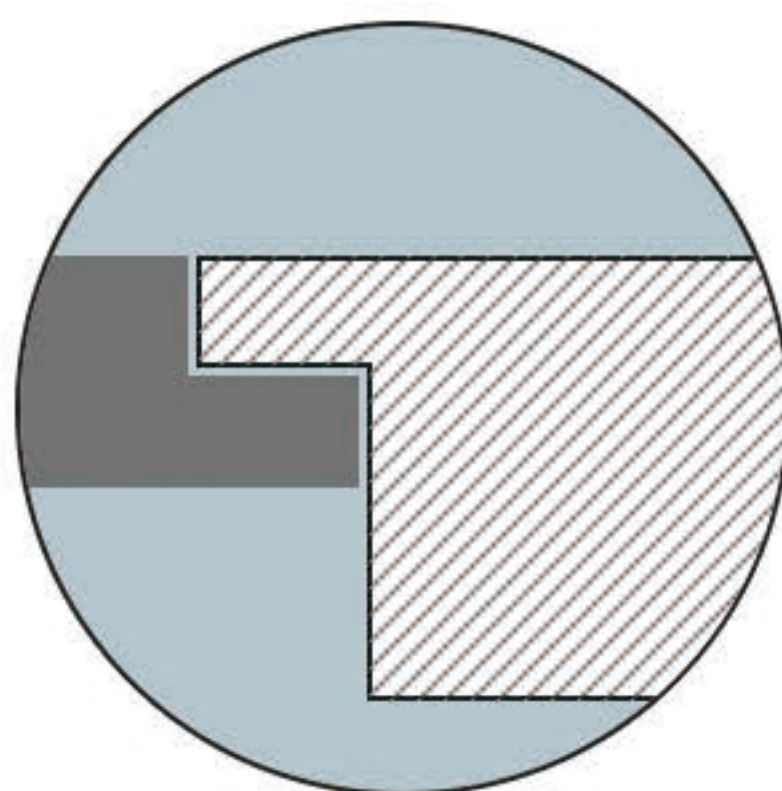
Easy to clean, prevent
dirt and bacteria.



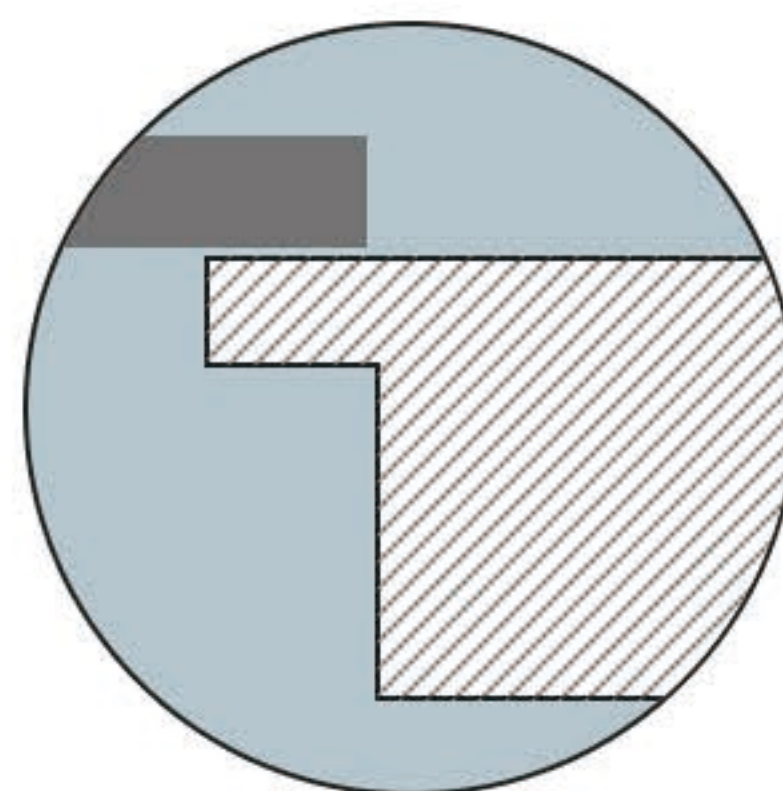
Versatile Installation



Drop-in Mount
Recommended



Flush Mount
Recommended



Under Mount