

# ASSEMBLY INSTRUCTIONS



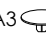



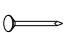



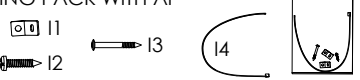
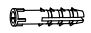
PAGE: 1/5

MODEL : UH 7742

Before you begin, please follow assembly instructions carefully, then follow them step by step.

Read instruction carefully . See Furniture Parts list and Hardware List for guidance . Be sure you have all parts before you start assembling . Place and assemble furniture on a clean flat soft surface , such as carpet or rug to prevent being scratched .

PART LIST		QTY
1	TOP PANEL	1 PC
2	BOTTOM PANEL	1 PC
3	SIDE PANEL (L)	1 PC
4	SIDE PANEL (R)	1 PC
5	CENTER PANEL	4 PCS
6	MIDDLE PANEL (1)	2 PCS
7	MIDDLE PANEL (2)	1 PC
8	BACK PANEL (1)	1 PC
9	BACK PANEL (2)	1 PC
10	CABINET LEG	4 PCS

HARDWARE			
A	MINI FIX	A1  A2  A3 	24 SETS
B	M8 X 30MM WOOD DOWEL		36 PCS
C	M6 X 50MM CSK CAP WOOD SCREW		12 PCS
D	ALLEN KEY M4		1 PC
E	5/8 NAIL		51 PCS
F	JCBC Screw M6 x 70		8 PCS
G	SPRING WASHER M6		8 PCS
H	FLAT WASHER M6		8 PCS
I	TIPPING PACK WITH AI		2 SETS
J	WALL PLUG ( NOT INCLUDED )		-

**SELF-PREPARED TOOLS:** Tools below are NOT included in package.



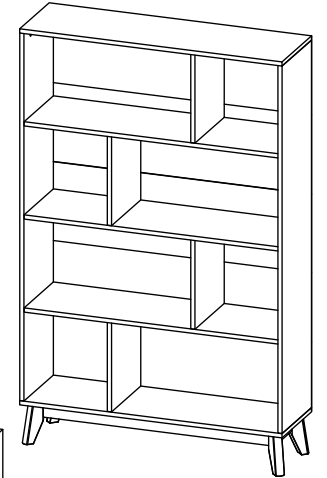
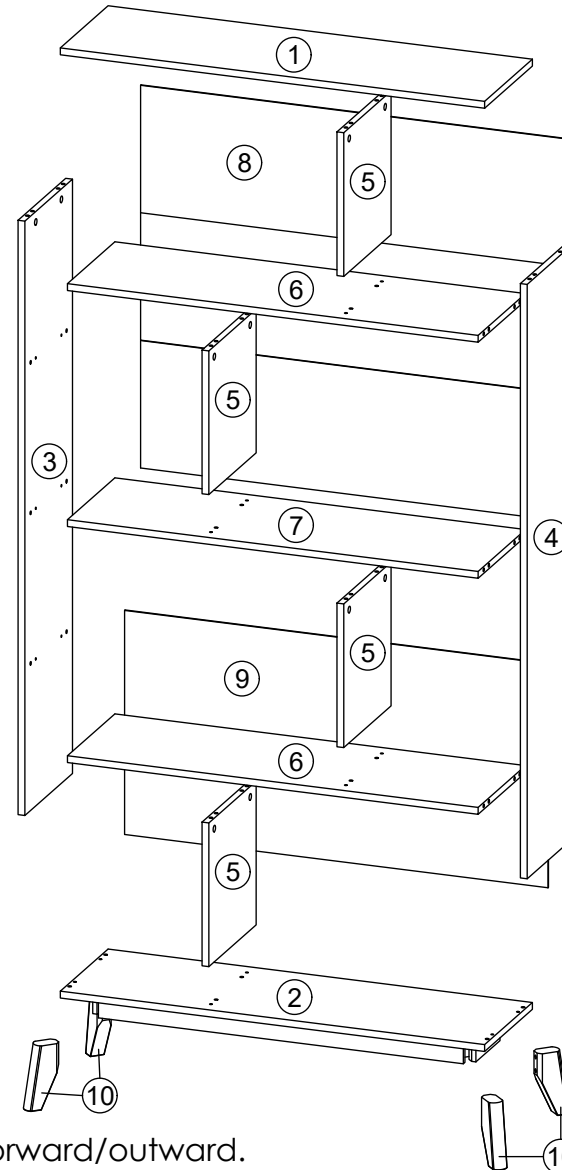
SCREWDRIVER



HAMMER



POWER DRILL



## Reminder:

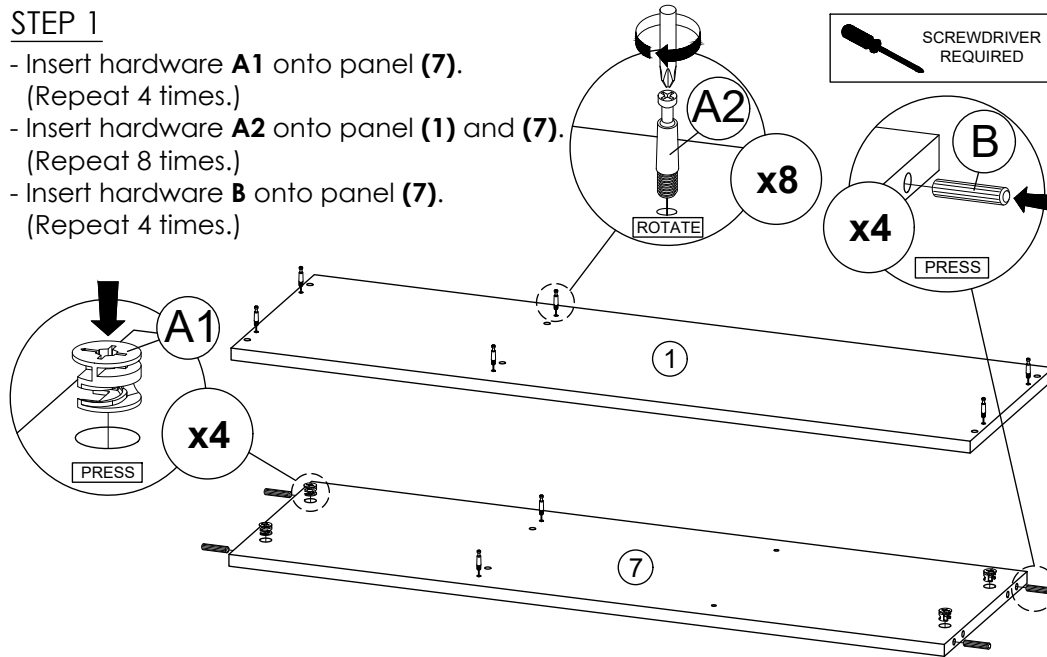
Please ensure that all surfaces and edges with colours/laminations are facing forward/outward.

# ASSEMBLY INSTRUCTIONS

# MODEL : UH 7742

## STEP 1

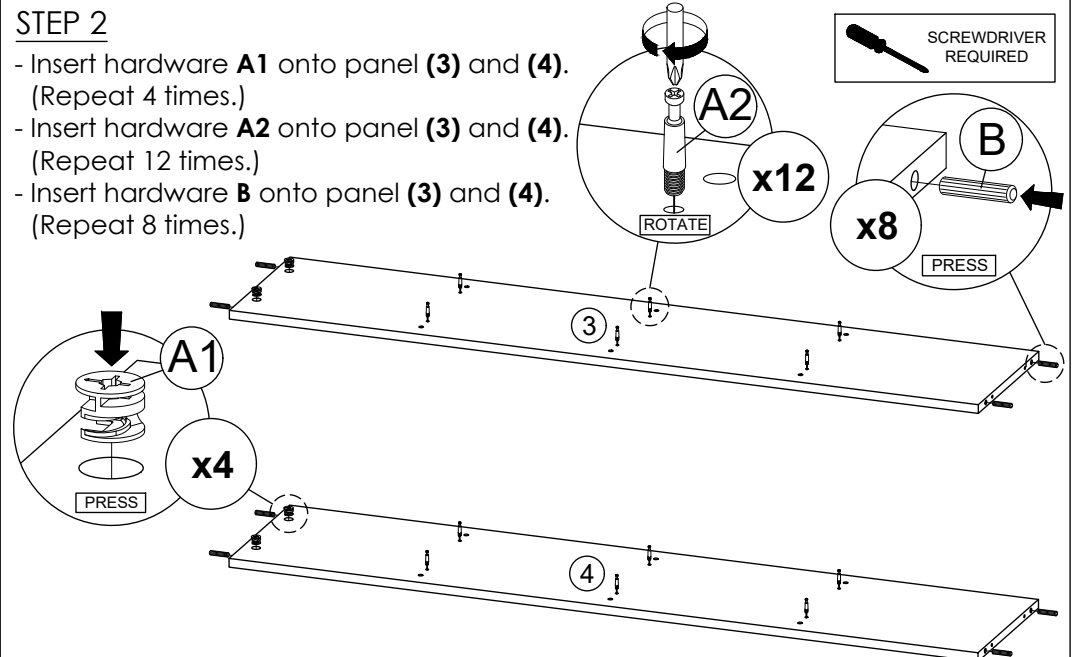
- Insert hardware **A1** onto panel (7).  
(Repeat 4 times.)
- Insert hardware **A2** onto panel (1) and (7).  
(Repeat 8 times.)
- Insert hardware **B** onto panel (7).  
(Repeat 4 times.)



\* Ensure the arrows on hardware **A1** point towards mounting positions.

## STEP 2

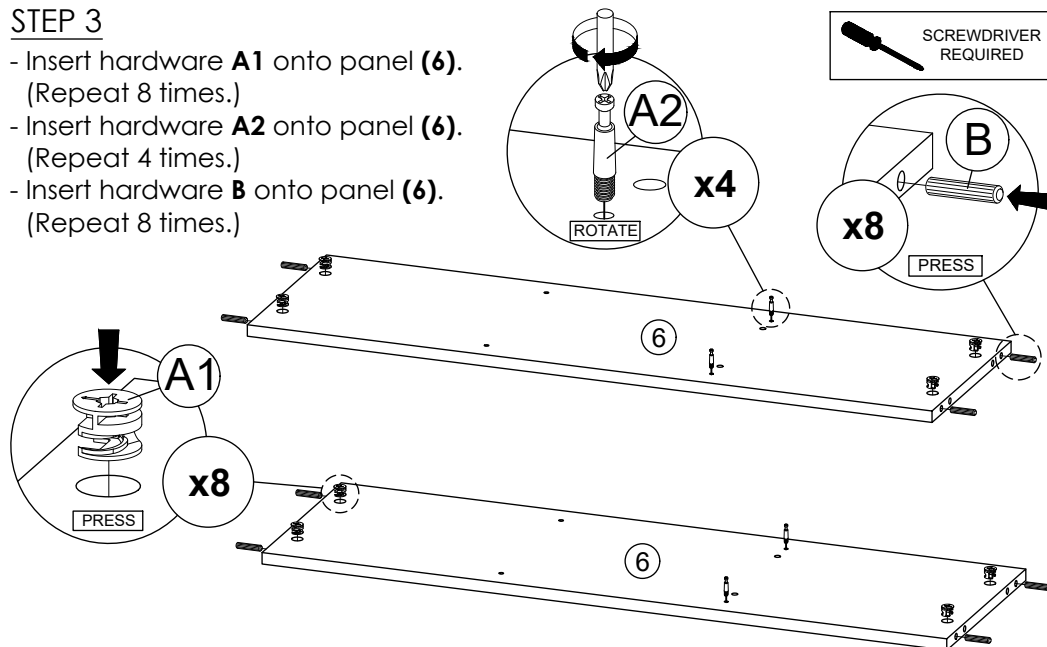
- Insert hardware **A1** onto panel (3) and (4).  
(Repeat 4 times.)
- Insert hardware **A2** onto panel (3) and (4).  
(Repeat 12 times.)
- Insert hardware **B** onto panel (3) and (4).  
(Repeat 8 times.)



\* Ensure the arrows on hardware **A1** point towards mounting positions.

## STEP 3

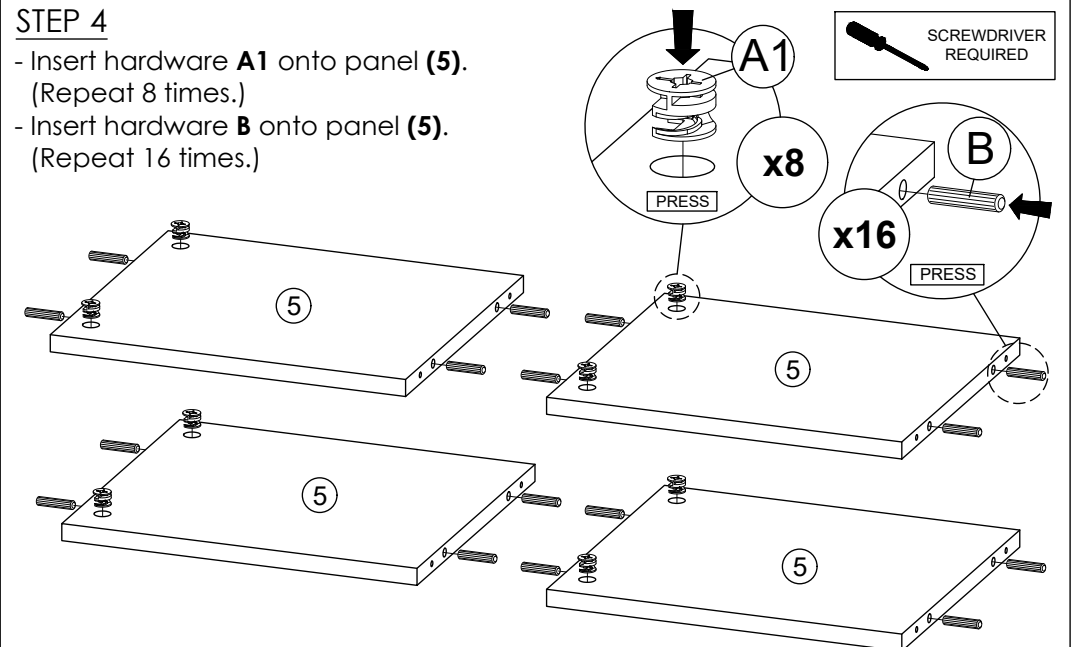
- Insert hardware **A1** onto panel (6).  
(Repeat 8 times.)
- Insert hardware **A2** onto panel (6).  
(Repeat 4 times.)
- Insert hardware **B** onto panel (6).  
(Repeat 8 times.)



\* Ensure the arrows on hardware **A1** point towards mounting positions.

## STEP 4

- Insert hardware **A1** onto panel (5).  
(Repeat 8 times.)
- Insert hardware **B** onto panel (5).  
(Repeat 16 times.)



\* Ensure the arrows on hardware **A1** point towards mounting positions.

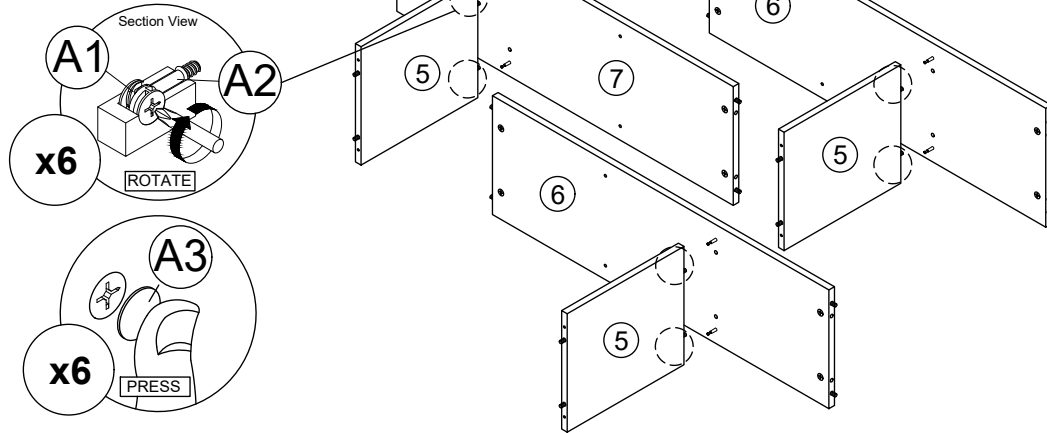
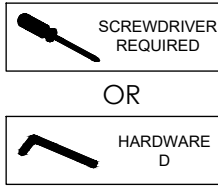
# ASSEMBLY INSTRUCTIONS

PAGE: 3/5

# MODEL : UH 7742

## STEP 5

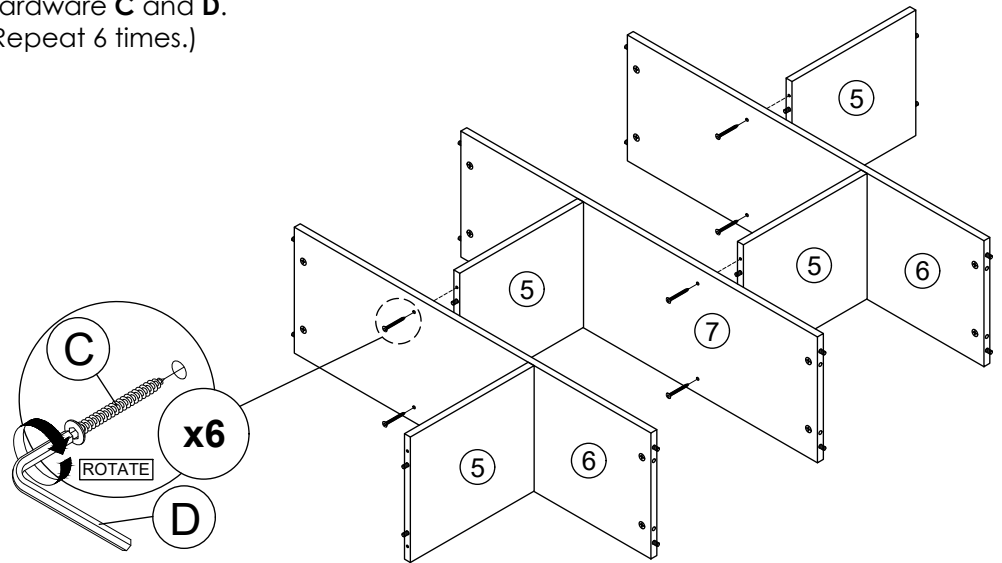
- Attach panel (5) to panel (6) and (7).
- Insert all hardware **A2** into **A1**.
- Rotate all **A1** until tight.
- Apply **A3** onto all **A1**.
- (Repeat 6 times.)



\* In this step hardware **A1**, **A2** and **B** are pre-inserted.

## STEP 6

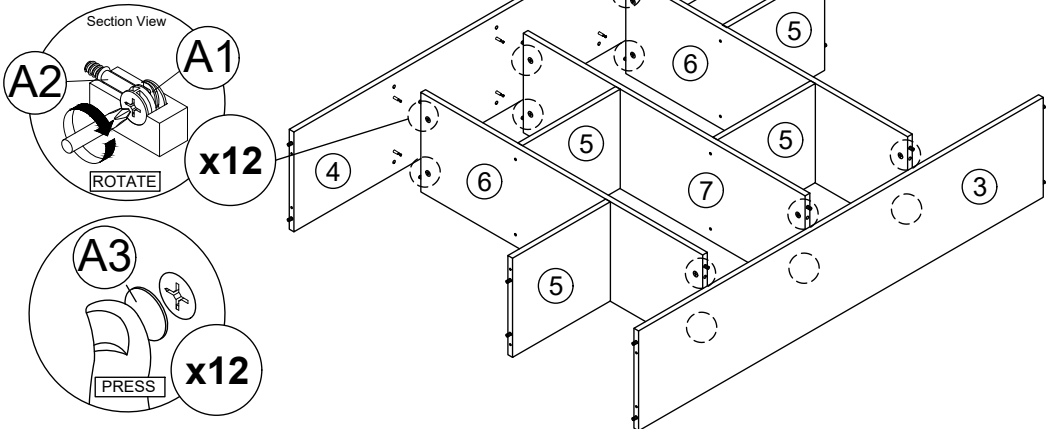
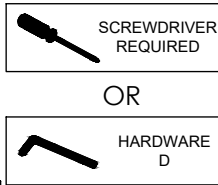
- Connect panel (5) to panel (6) and (7) by using hardware **C** and **D**.
- (Repeat 6 times.)



\* In this step hardware **B** are pre-inserted.

## STEP 7

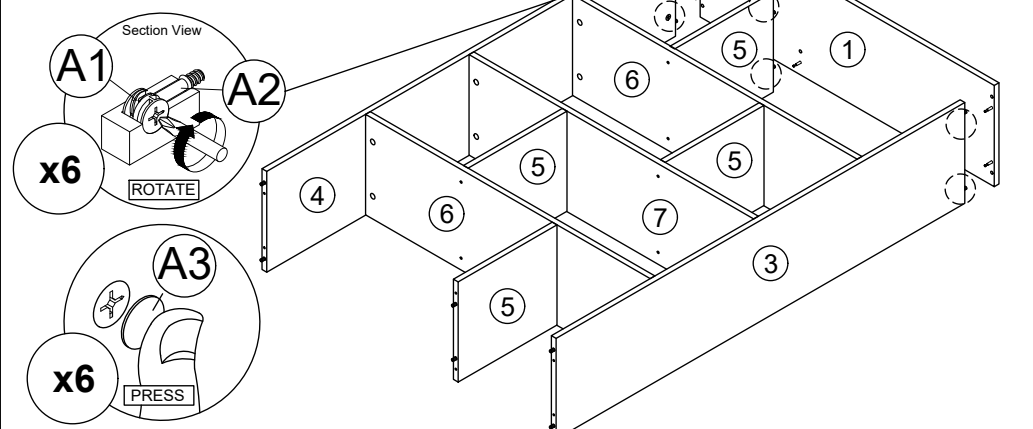
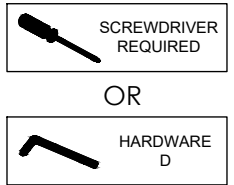
- Attach panel (3) and (4) to panel (6) and (7).
- Insert all hardware **A2** into **A1**.
- Rotate all **A1** until tight.
- Apply **A3** onto all **A1**.
- (Repeat 12 times.)



\* In this step hardware **A1**, **A2** and **B** are pre-inserted.

## STEP 8

- Attach panel (1) to panel (3), (4) and (5).
- Insert all hardware **A2** into **A1**.
- Rotate all **A1** until tight.
- Apply **A3** onto all **A1**.
- (Repeat 6 times.)



\* In this step hardware **A1**, **A2** and **B** are pre-inserted.

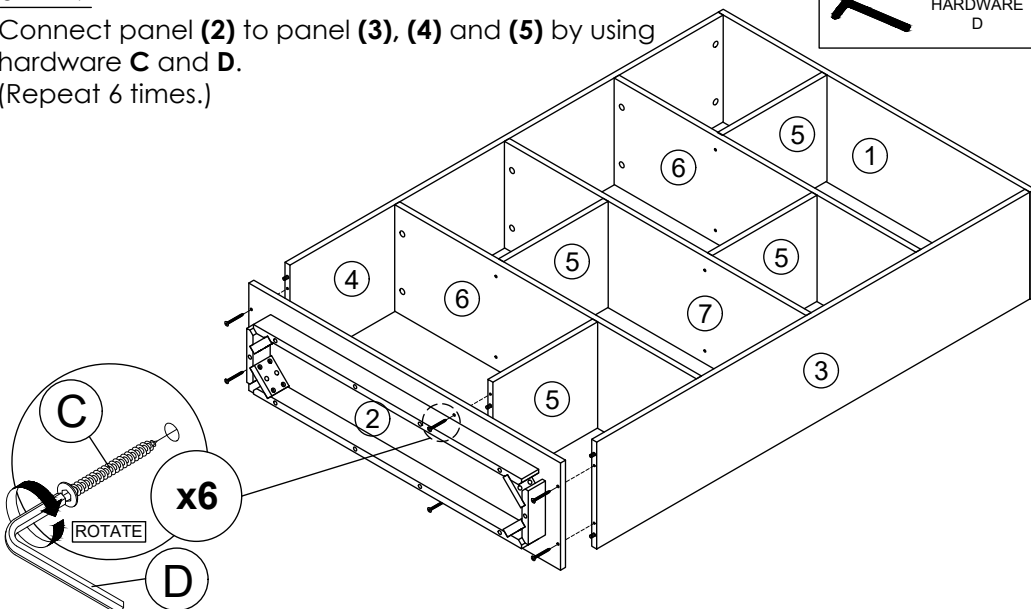
# ASSEMBLY INSTRUCTIONS

PAGE: 4/5

# MODEL : UH 7742

## STEP 9

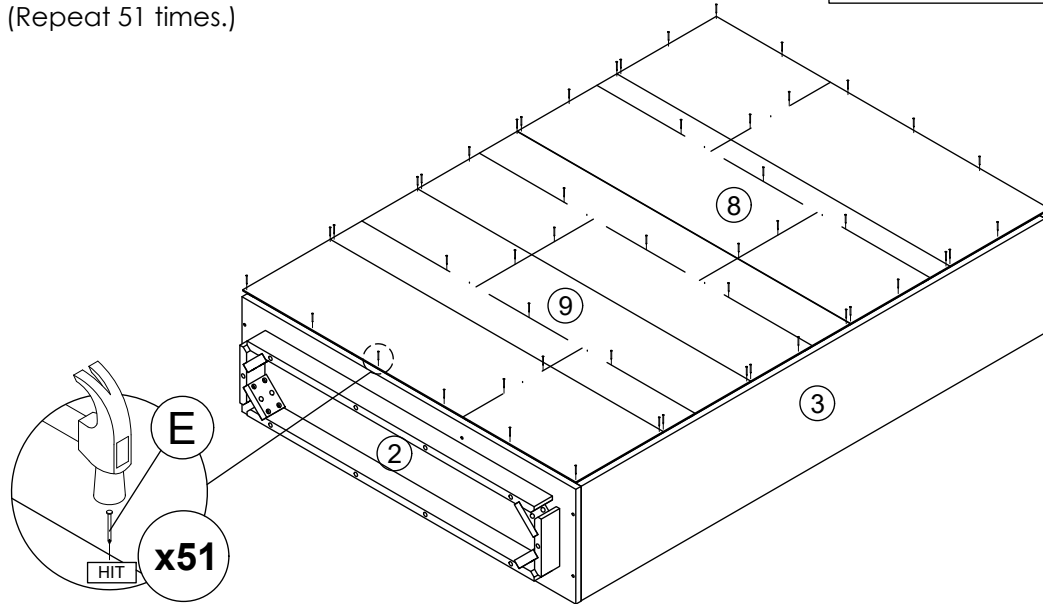
Connect panel (2) to panel (3), (4) and (5) by using hardware C and D.  
(Repeat 6 times.)



\* In this step hardware B are pre-inserted.

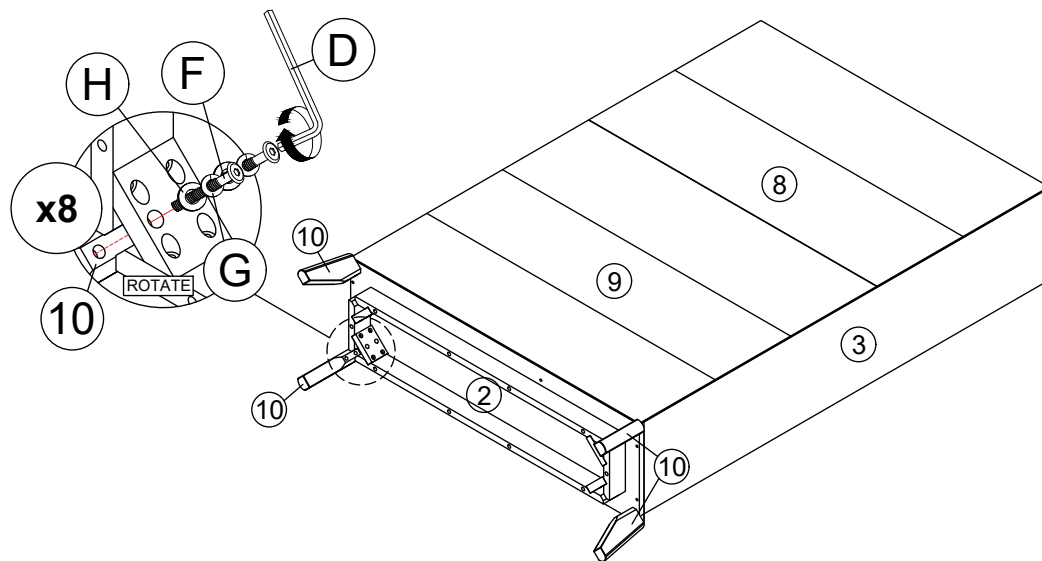
## STEP 10

Assemble panel (8) and (9) to entire body with hardware E.  
(Repeat 51 times.)



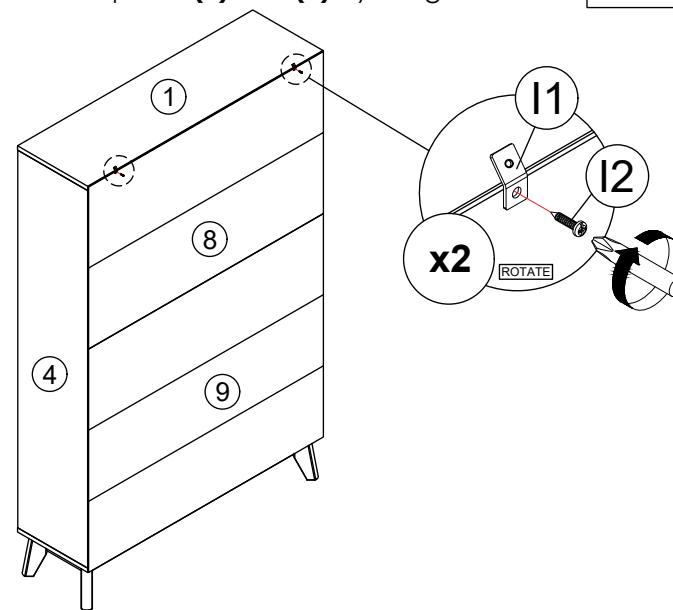
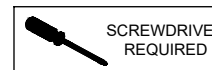
## STEP 11

Assemble part 10 into panel (2) by using hardware D, F, G and H.  
(Repeat 2 times for each Leg.)



## STEP 12

Assemble hardware I1 into panel (1) and (8) by using hardware I2.  
(Repeat 2 times.)



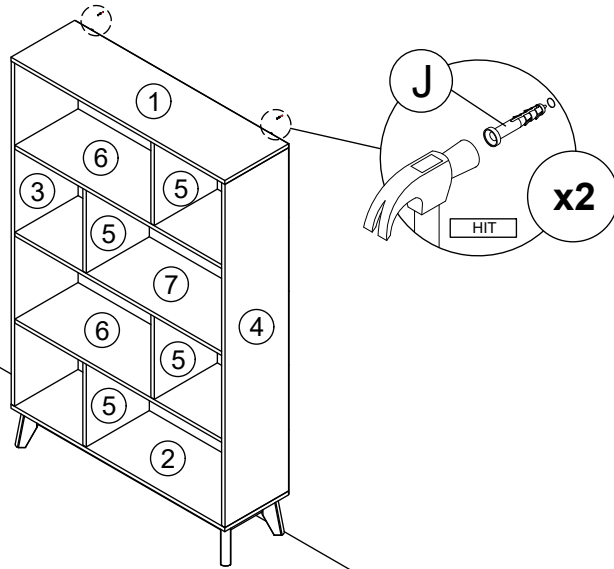
# ASSEMBLY INSTRUCTIONS

PAGE: 5/5

# MODEL : UH 7742

## STEP 13

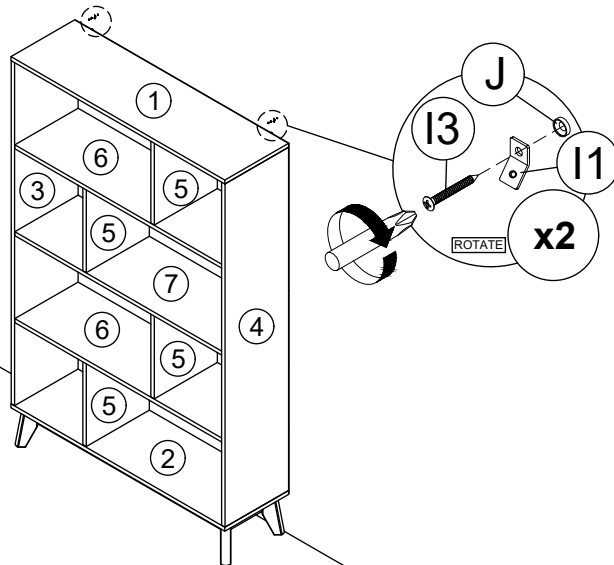
- Mark and use the power drill to drill a hole on the wall.
- Hit hardware **J** into the wall.  
(Repeat 2 times.)



\* In this step hardware **J** are **NOT** included.

## STEP 14

- Assemble hardware **I1** into hardware **J** by using hardware **I3**.  
(Repeat 2 times.)



\* In this step hardware **J** are **NOT** included.

## STEP 15

- Connect both of the hardware **I1** by using hardware **I4**.
- Tighten the hardware **I4**.  
(Repeat 2 times.)

